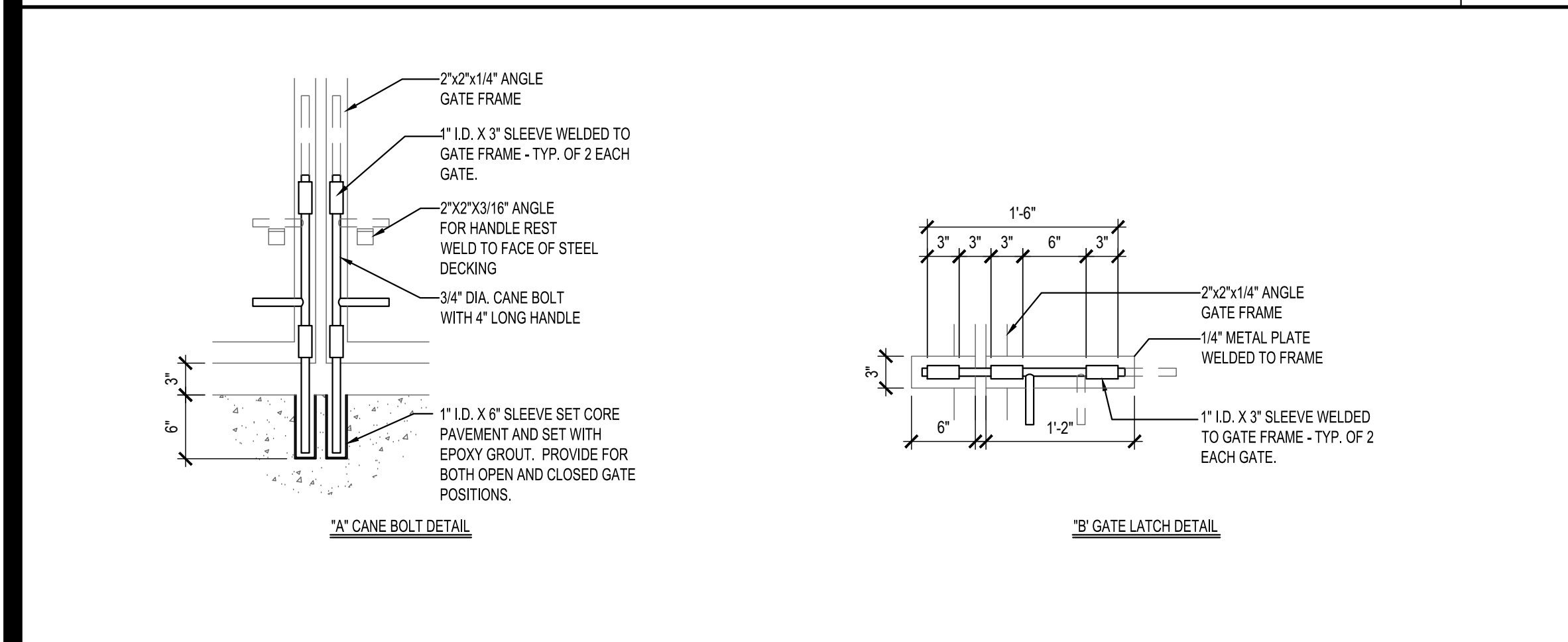


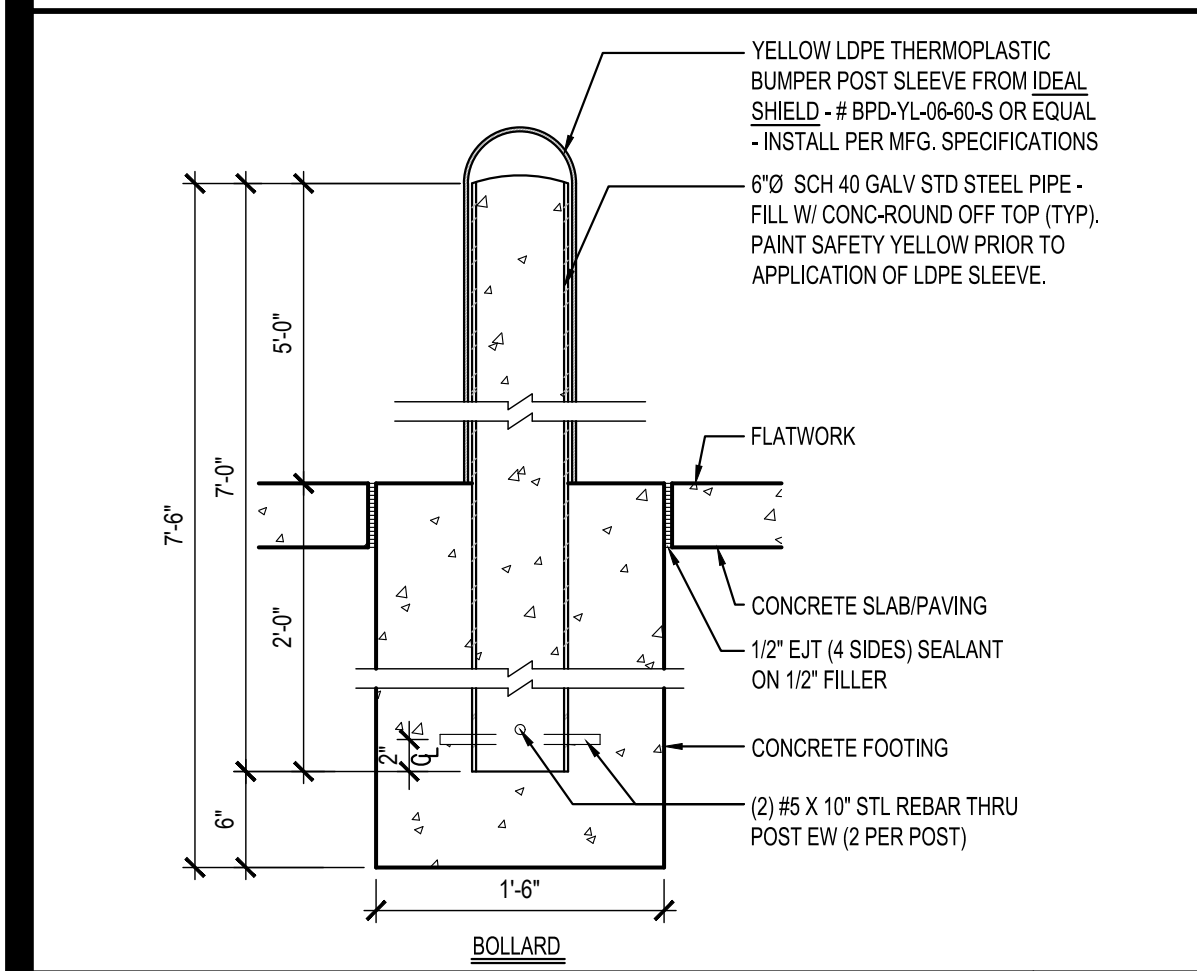
"COMING SOON" SIGN DETAIL 16

Scale= 1/4" = 1'-0" A-407



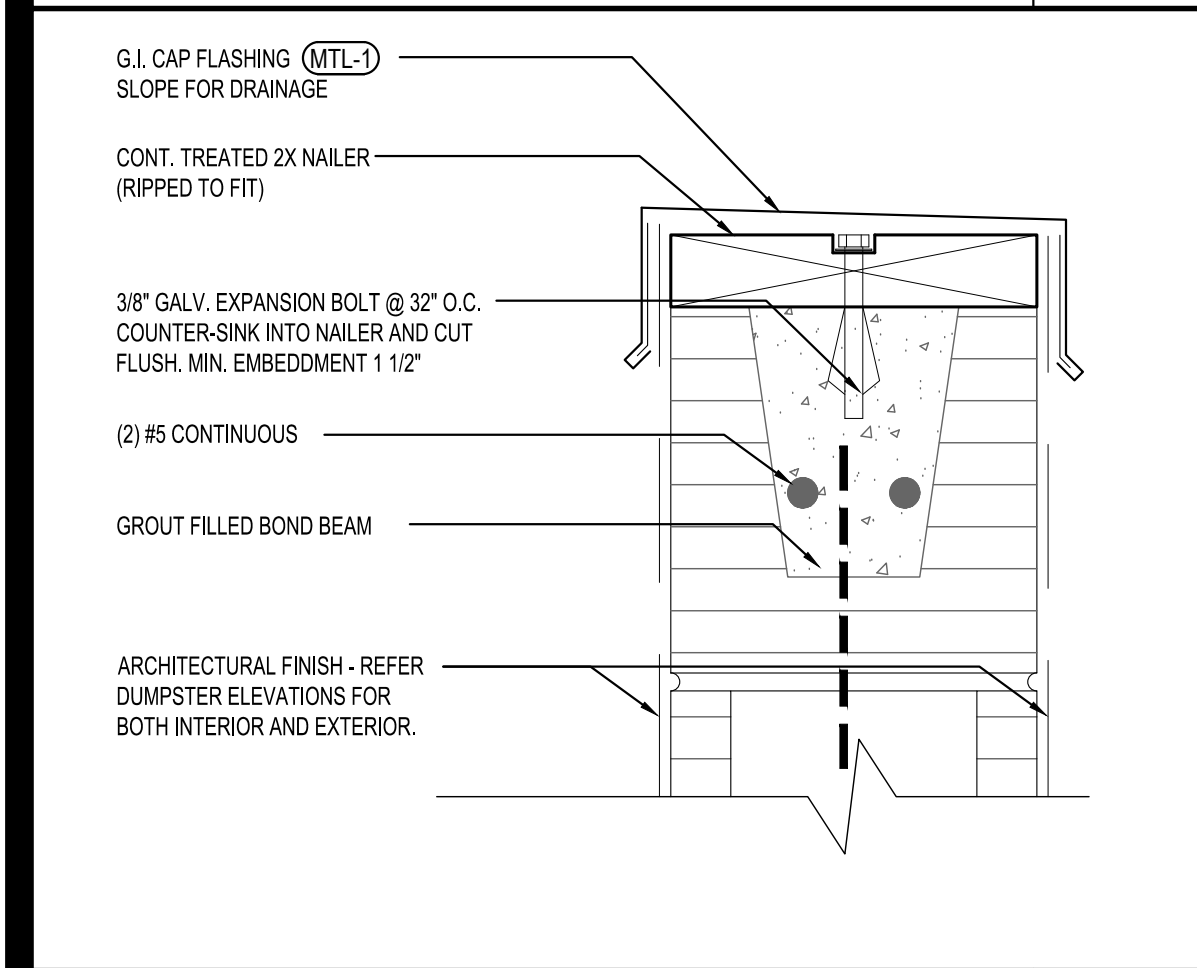
DUMPSTER GATE LATCH DETAILS 15

Scale= NTS A-407



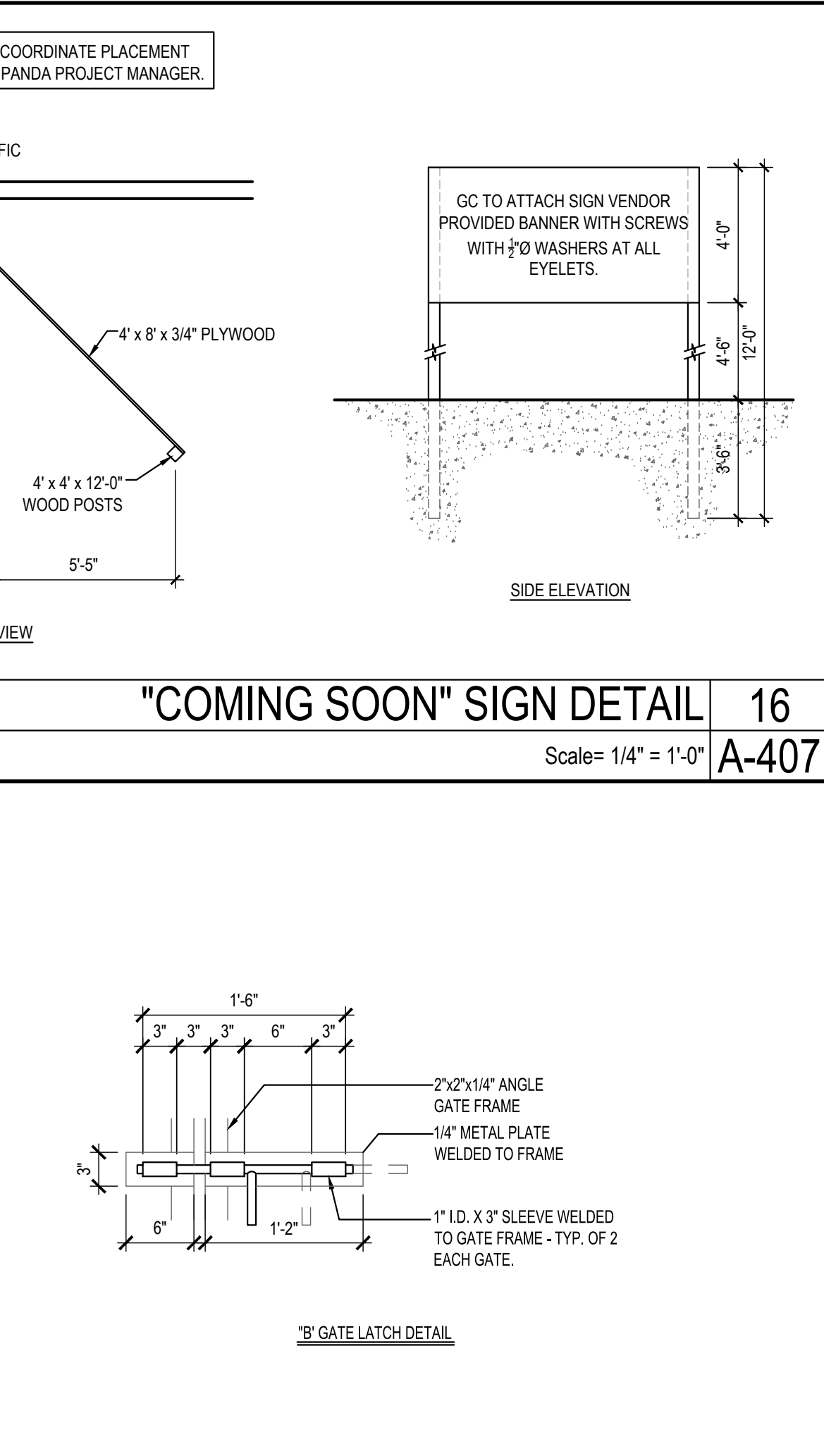
BOLLARD / POST BASE 18

Scale= 1" = 1'-0" A-407



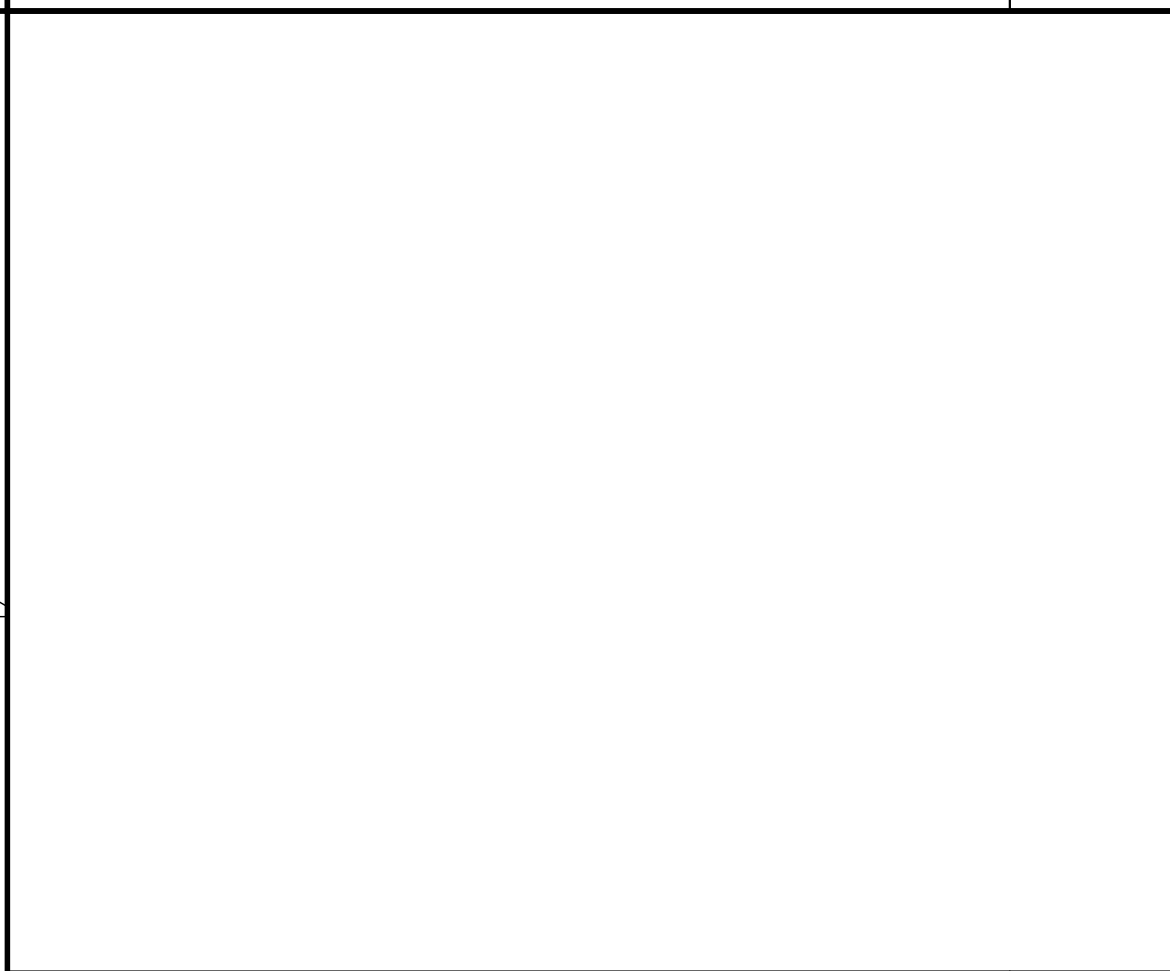
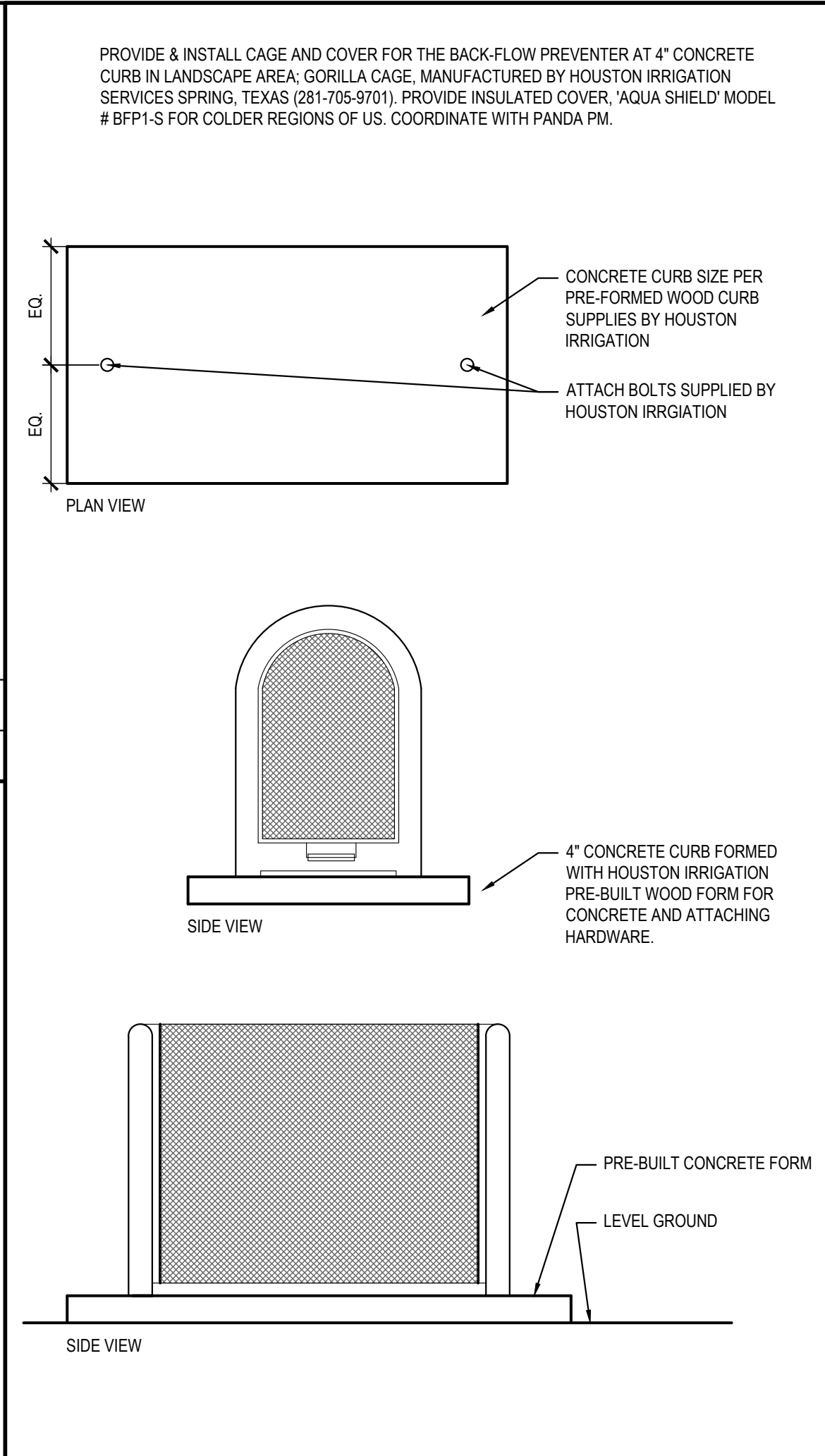
DUMPSTER CAP DETAIL 17

Scale= 3" = 1'-0" A-407



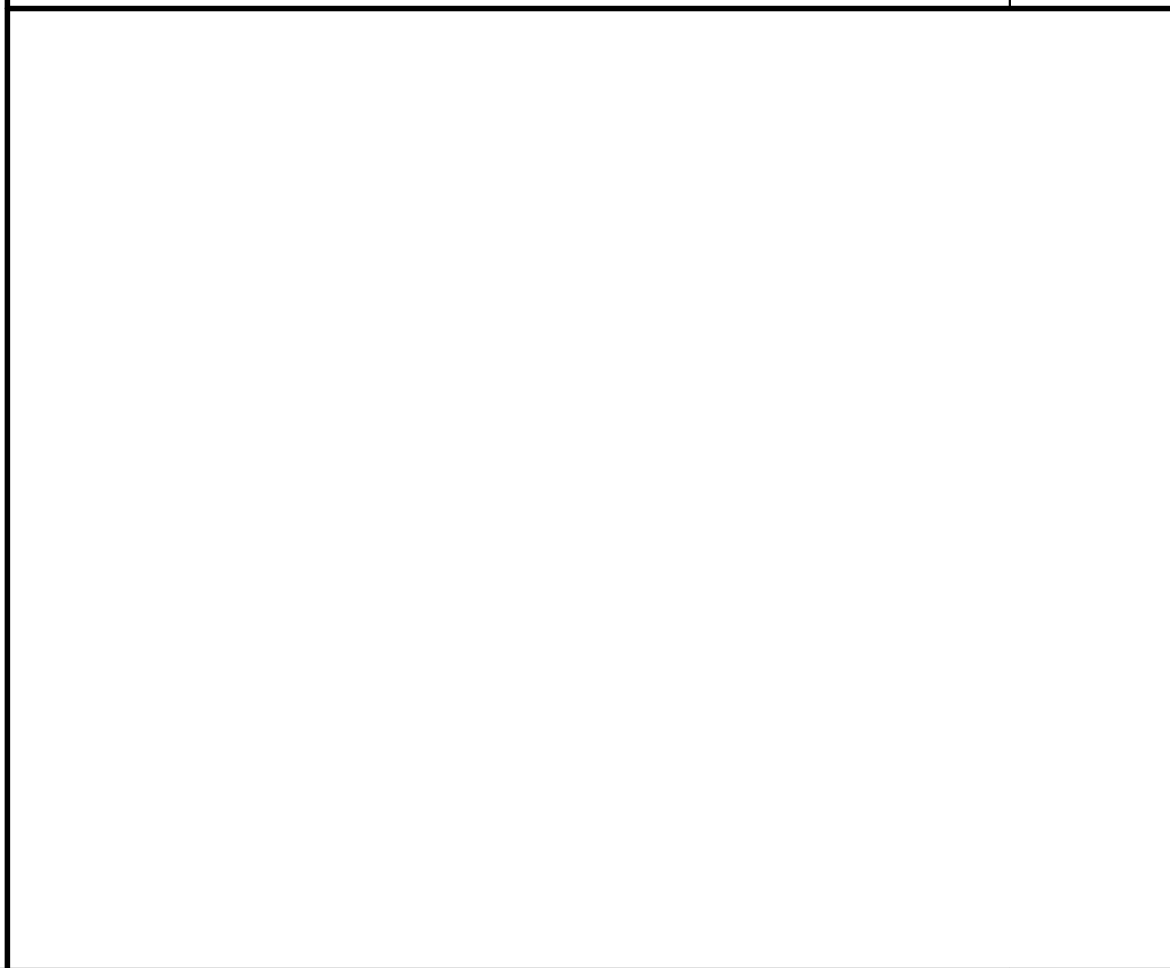
BACKFLOW PROTECTION CAGE 11

Scale= NTS A-407



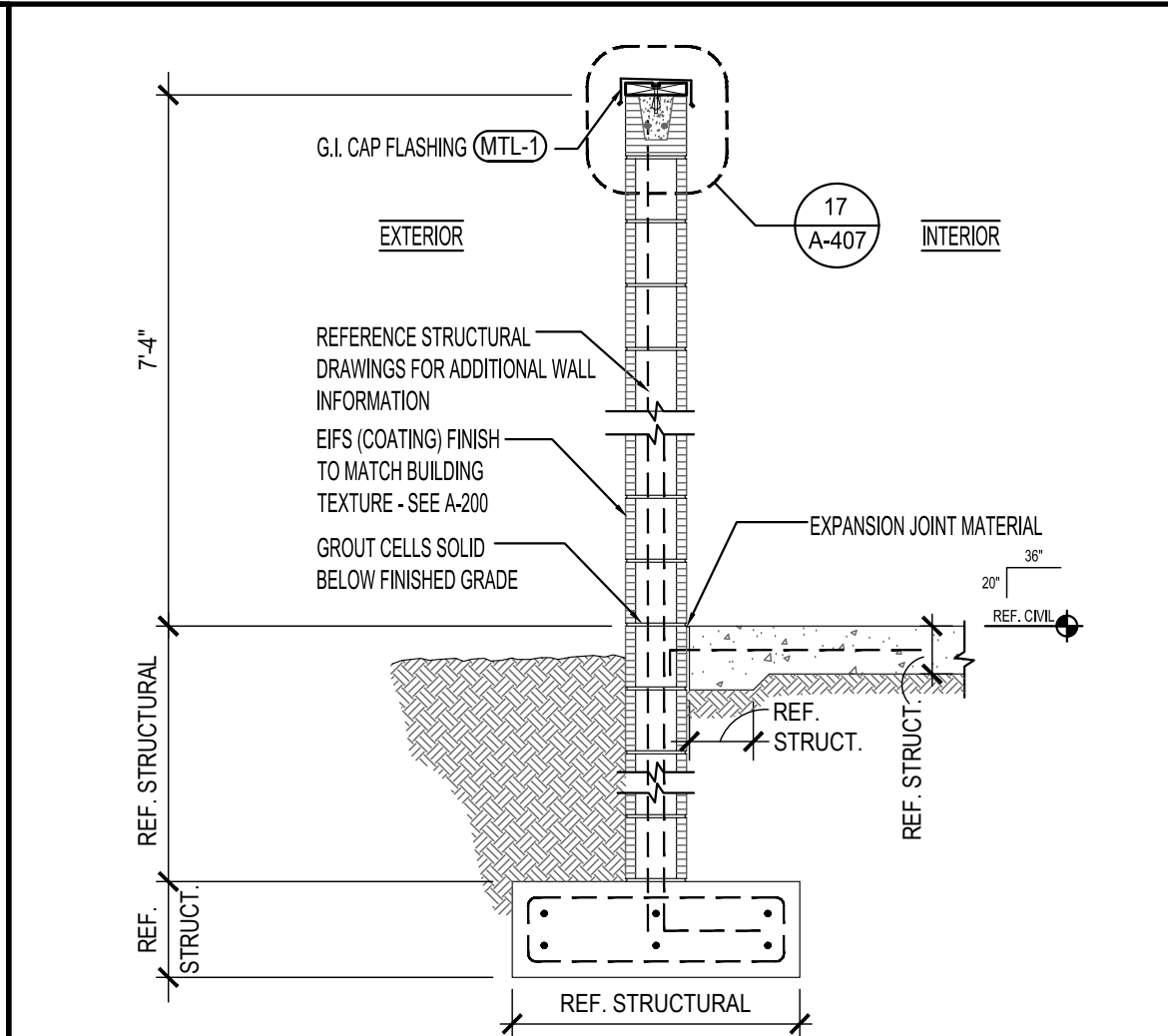
NOT USED 10

Scale= A-407



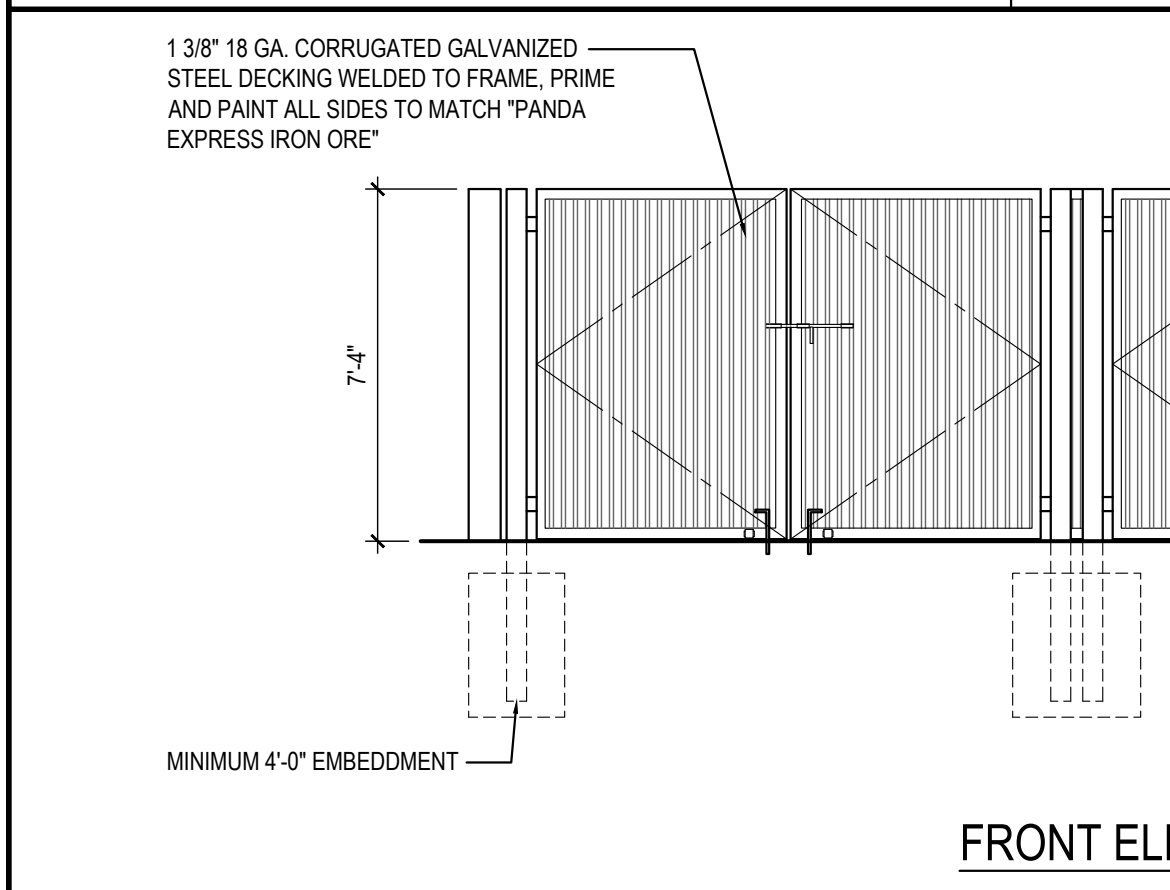
NOT USED 9

Scale= A-407



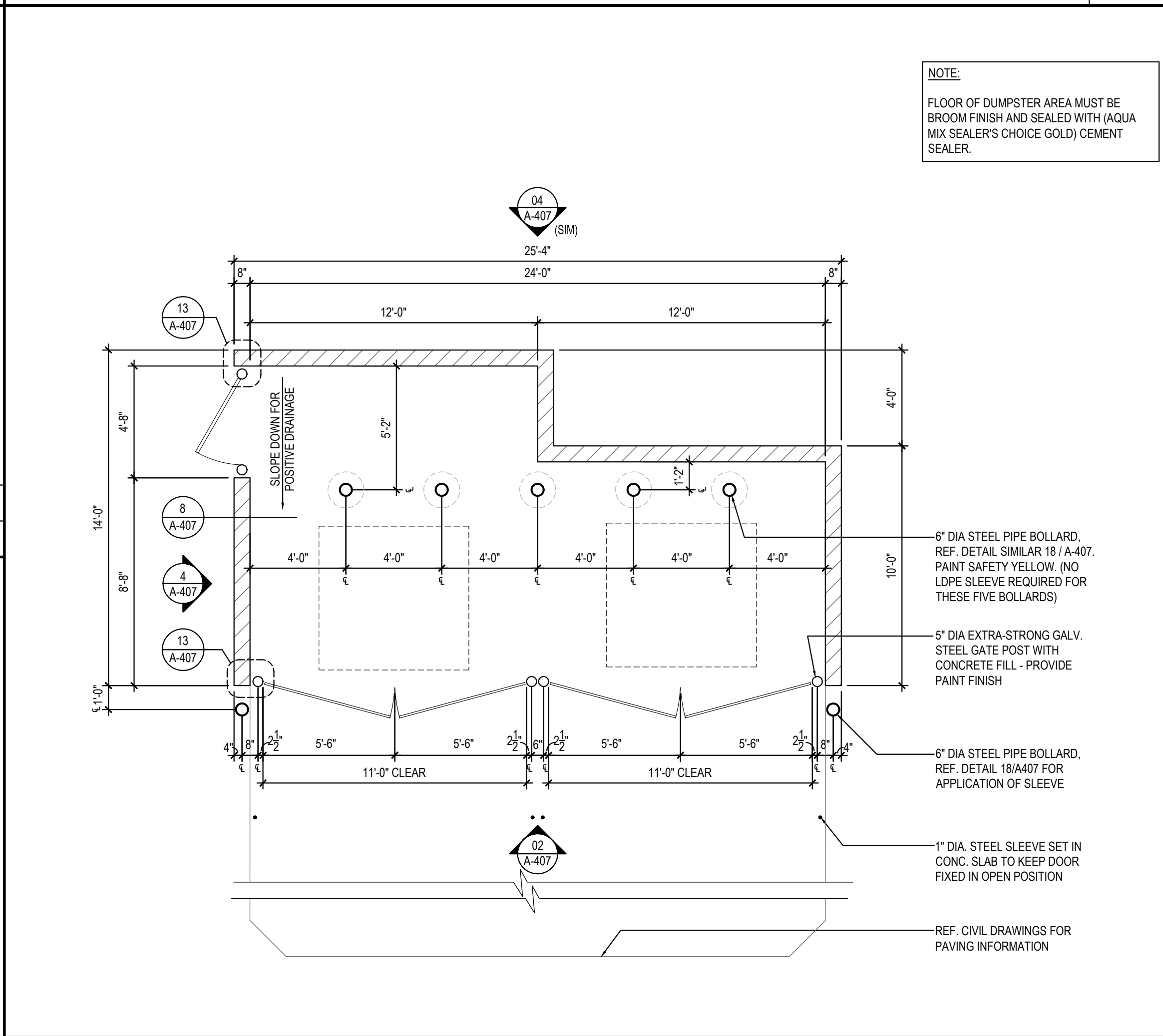
TRASH ENCLOSURE WALL SECTION 8

Scale= 1/2" = 1'-0" A-407



FRONT ELEVATION 2

Scale= 1/4" = 1'-0" A-407



TRASH ENCLOSURE 1

Scale= 1/4" = 1'-0" A-407

**PANDA EXPRESS**  
CHINESE KITCHEN

PANDA EXPRESS, INC.  
1683 Walnut Grove Ave.  
Rosemead, California  
91770  
Telephone: 626.799.9898  
Facsimile: 626.372.8288

All ideas, designs, arrangement and plans indicated or represented by this drawing are the property of Panda Express Inc. and were created for use on this specific project. None of these ideas, designs, arrangements or plans may be used by or disclosed to any person, firm, or corporation without the written permission of Panda Express Inc.

REVISIONS:	
ISSUE DATE:	

DRAWN BY: AE/SS

PANDA PROJECT #: D23503

PANDA STORE #: -

ARCH PROJECT #: 261-443

**idGROUP**

CARRY D. MCLEAN  
REGISTERED ARCHITECT  
STATE OF TENNESSEE  
NO. 106103

10-20-22

**PANDA EXPRESS**

PANDA HOME 2600  
NORTH RIVERSIDE DR & 2ND ST.  
CLARKSVILLE, TN 37040

**A-407**

TRASH ENCLOSURE  
DETAILS

PANDA HOME 2600 R4