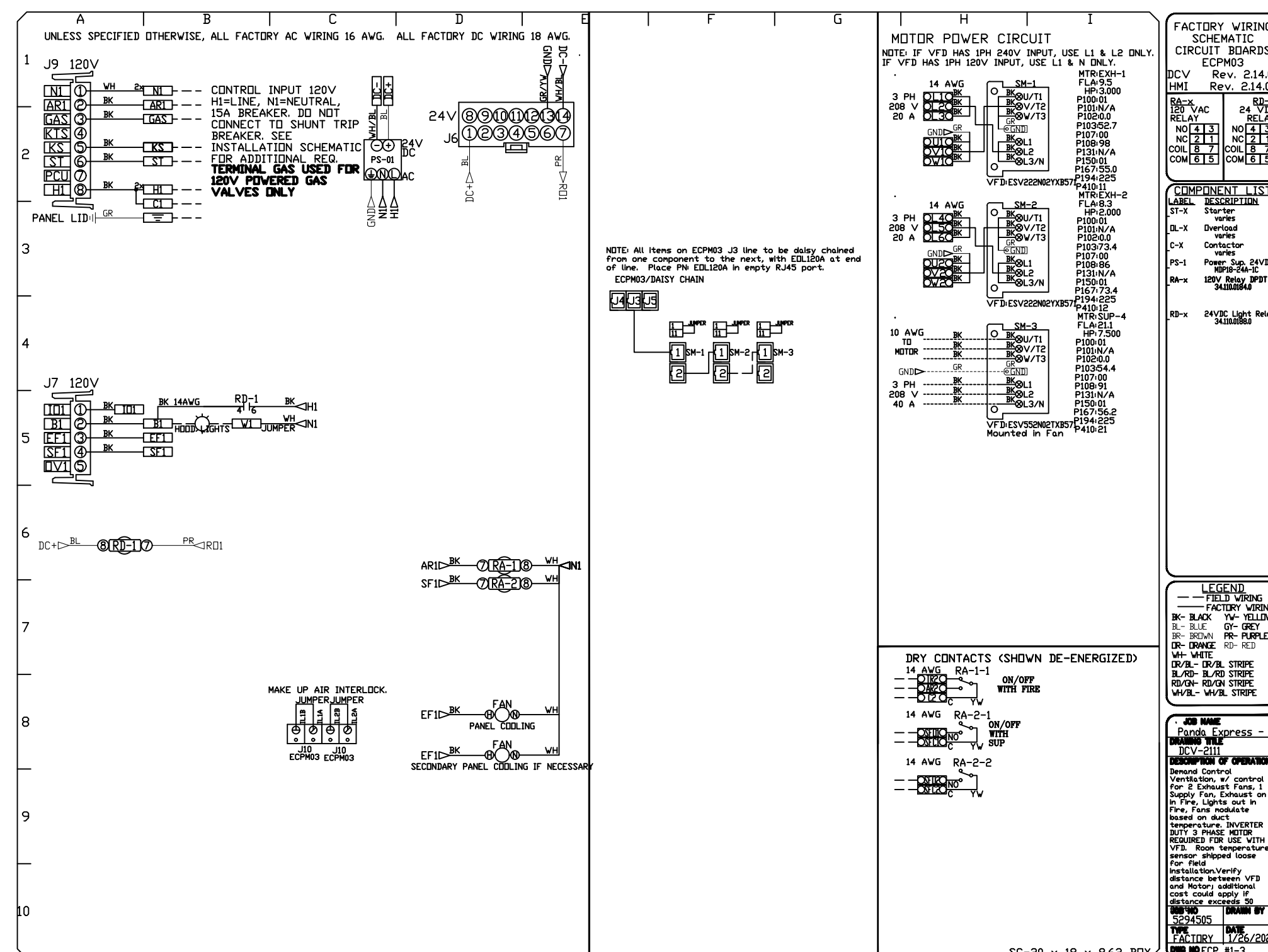
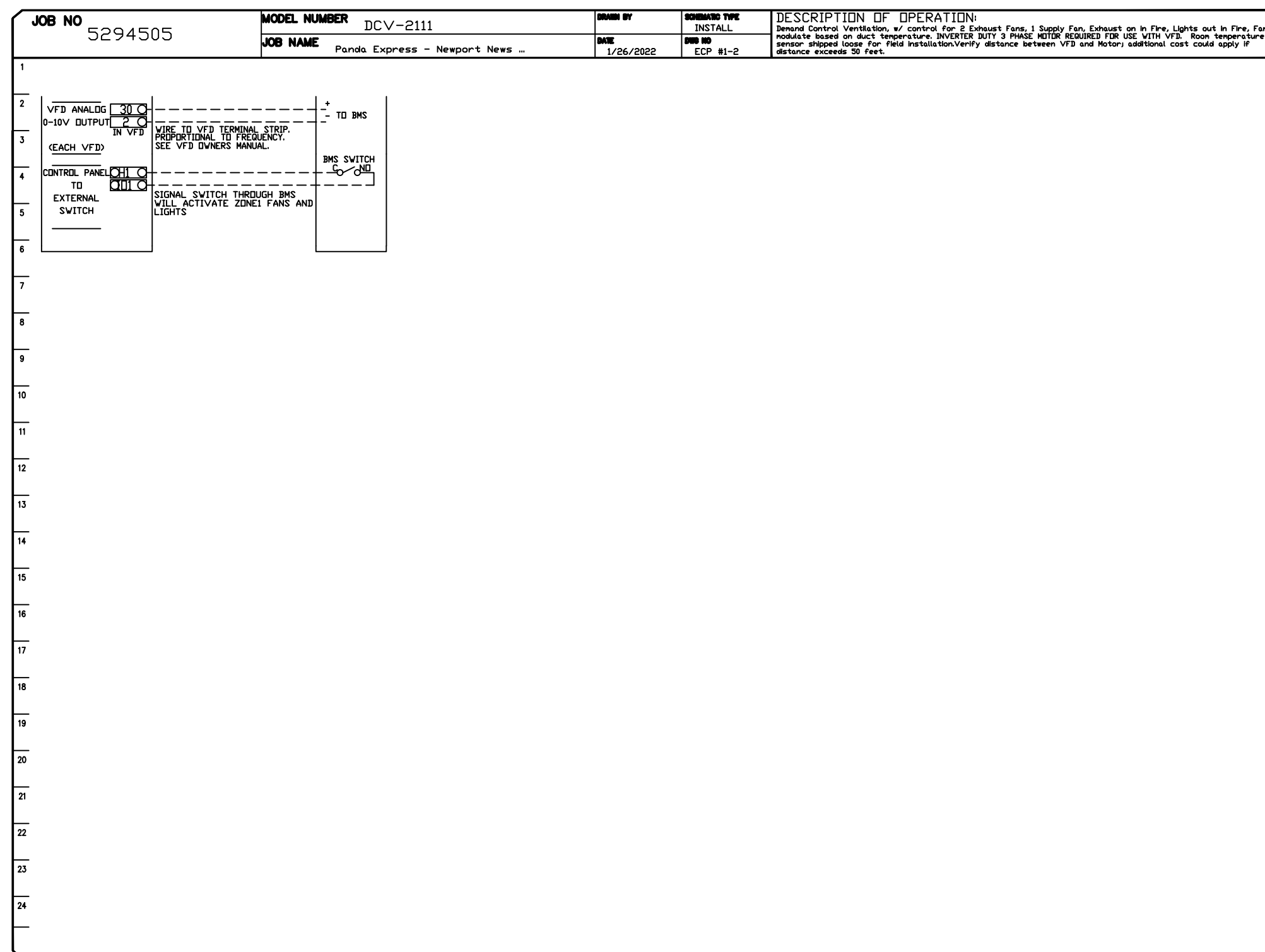
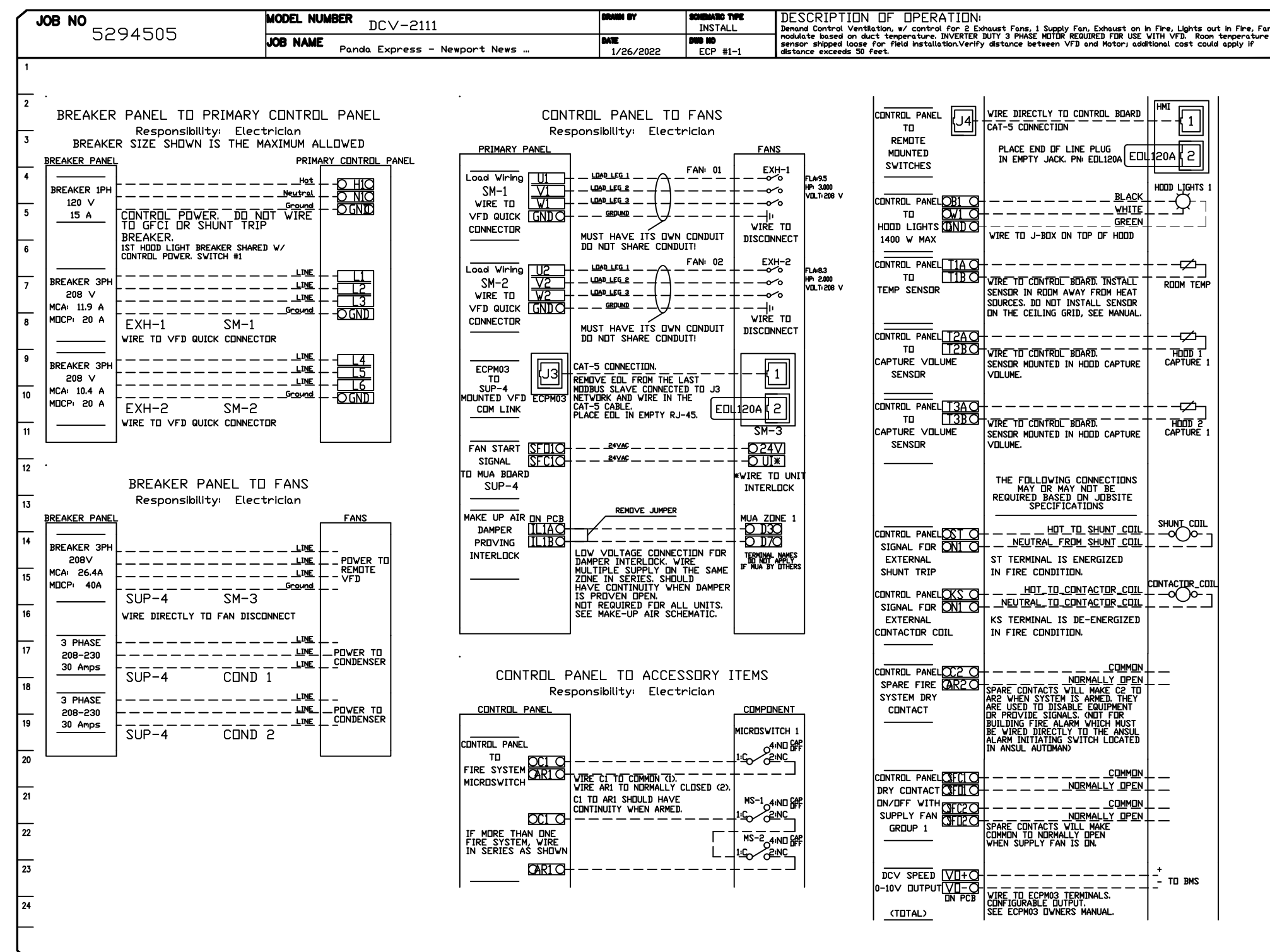


DCV CONTROL PACKAGE - DCV#5624+505											
NO	TAG	PACKAGE #	LOCATION	SWITCHES		OPTION	FANS CONTROLLED				
				LOCATION	QUANTITY		TYPE	6	HP	VOLTS	FLA
1		DCV-2111	WALL UTILITY CABINET LEFT	08 - SHIP LOOSE ✓ W/ P/ WIRE	1 LIGHT 1 FAN	SMART CONTROLS DCV	EXHAUST	3	3,000	208	9.5
							EXHAUST	3	2,000	208	8.3
							SUPPLY	3	7,500	208	21.1




REVISIONS		DATE
DESCRIPTION		
△		
△		
△		
△		

Panda Express - Newport News VA (08164) - rev1

6104 Jefferson Ave,

Newport News, VA. 23605



Southern California Office

www.captiveinc.com

DATE: 1/26/2022	DWG.#: 5294505
DRAWN BY: AH-86	SCALE: 3/4" = 1'-0"
MASTER DRAWING	

SHEET NO.

8



PANDA EXPRESS, INC.
1683 Walnut Grove Ave.
Rosemead, California
91770
Telephone: 626.799.9898
Facsimile: 626.372.8288

All ideas, designs, arrangement and plans indicated or represented by this drawing are the property of Panda Express Inc. and were created for use on this specific project. None of these ideas, designs, arrangements or plans may be used by or disclosed to any person, firm, or corporation without the written permission of Panda Express Inc.

REVISIONS:

2	SOLUTION F.2 09.30.21
3	OWNER REVISIONS 01.27.22

ISSUE DATE:

ISSUE FOR PERMIT	01-29-2
ISSUE FOR BID	04-30-2
ISSUE FOR BID 2	11-02-2
ISSUE FOR BID (DT)	02-04-22

DRAWN BY: AE

PANDA PROJECT #: D8164

PANDA STORE #-

ARCH PROJECT #: 261-321



MPW ENGINEERING, LLC
110 W. 7TH STREET • SUITE 600 • TULSA, OK 74111
(918) 582-4088 • (918) 582-4087 FAX

FOR INFORMATION ONLY

PANDA EXPRESS

TRUE WARM & WELCOME
JEFFERSON AVE. & MORRIS DR
NEWPORT NEWS, VA 23605

M-407

HOOD DETAIL PLAN

TRUE WARM & WELCOME 2300 R6

ISSUE FOR PERMIT 11-02-21

ISSUE FOR PERMIT 11-02-21