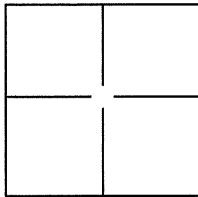


CORNER RECORD

Document Number CR 3544County of Alameda, CaliforniaCity of LivermoreBrief Legal Description East Avenue between Maple Street & School Street

CORNER TYPE

Government Corner	<input type="checkbox"/>	Control	<input checked="" type="checkbox"/>
Meander	<input type="checkbox"/>	Property	<input type="checkbox"/>
Rancho	<input type="checkbox"/>	Other	<input type="checkbox"/>

Date of Survey 08/20/2008 & 12/04/2008

COORDINATES(Optional)

N. _____
E. _____
Zone _____ NAD27 ☐ NAD83 ☐
NAD83 Epoch _____
Elev. _____
Vert. Datum: NGVD29 ☐ NADV88 ☐
Meas. Units: Metric ☐ Imperial ☐

Corner - Left as found ☐ Found and tagged ☐ Established ☐ Reestablished ☒ Rebuilt ☐

Identification and type of corner found: Evidence used to identify or procedure used to establish or reestablish the corner:

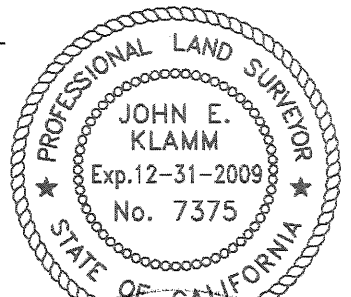
FOUND IRON PIN IN MONUMENT WELL PER "CITY OF LIVERMORE SECTIONAL MAPS - SURVEY OF 1939-1940", AS SHOWN ON SHEET 39 OF 46.

A description of the physical condition of the monument as found and as set or reset: FOUND IRON PIN IN MONUMENT WELL PER "CITY OF LIVERMORE SECTIONAL MAPS - SURVEY OF 1939-1940", SUBSEQUENTLY DESTROYED BY CONSTRUCTION. RESET 2 1/2" BRASS DISK IN MONUMENT WELL STAMPED "LS 7375"

SURVEYOR'S STATEMENT

This Corner Record was prepared by me or under my direction in conformance with the Land Surveyor's Act on December 23, 2008.

Signed John E. Klamm P.L.S. or R.C.E. No.: LS 7375



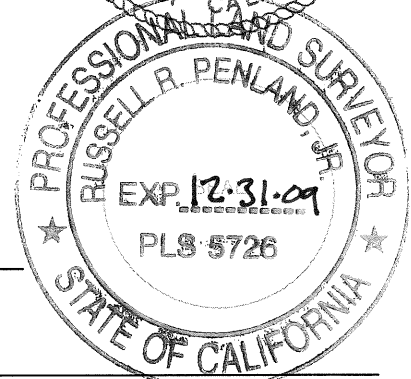
COUNTY SURVEYOR'S STATEMENT

This Corner Record was received 12-17-2008 and examined and filed 12-26-2009.

Signed Russell R. Penland, Jr. P.L.S. or R.C.E. No.: 5726

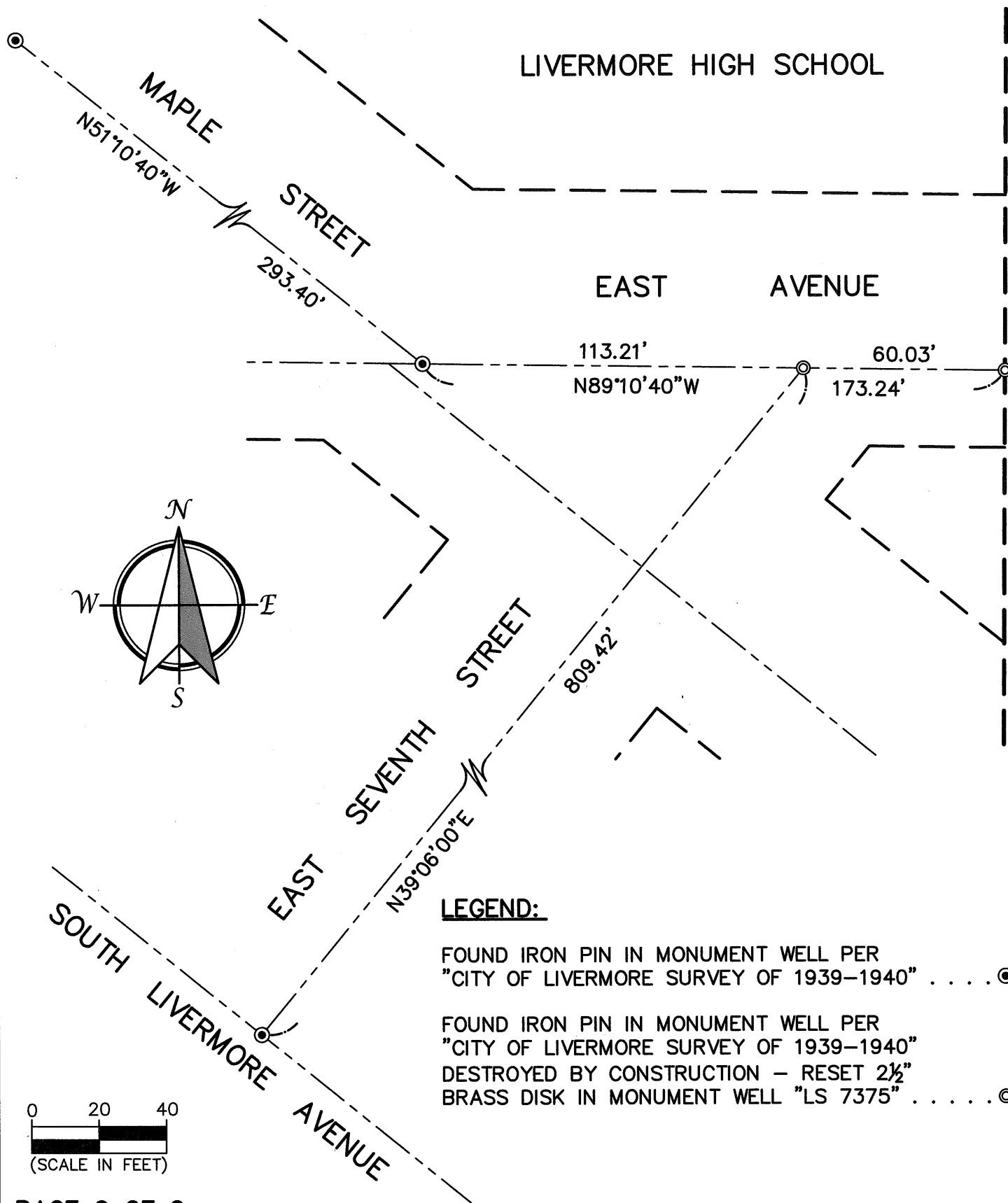
Title COUNTY SURVEYOR

County Surveyor's Comment _____



CR 3544

BK31 792



PAGE 2 OF 2

CORNER RECORD
 MONUMENTS REESTABLISHED IN EAST AVENUE
 CITY OF LIVERMORE, COUNTY OF ALAMEDA
 STATE OF CALIFORNIA

31 Natoma Street, Suite #160
 Folsom, CA 95630
 TEL: 916-608-0707 FAX: 916-608-0701
TSD Engineering, Inc.
 Total Site Design