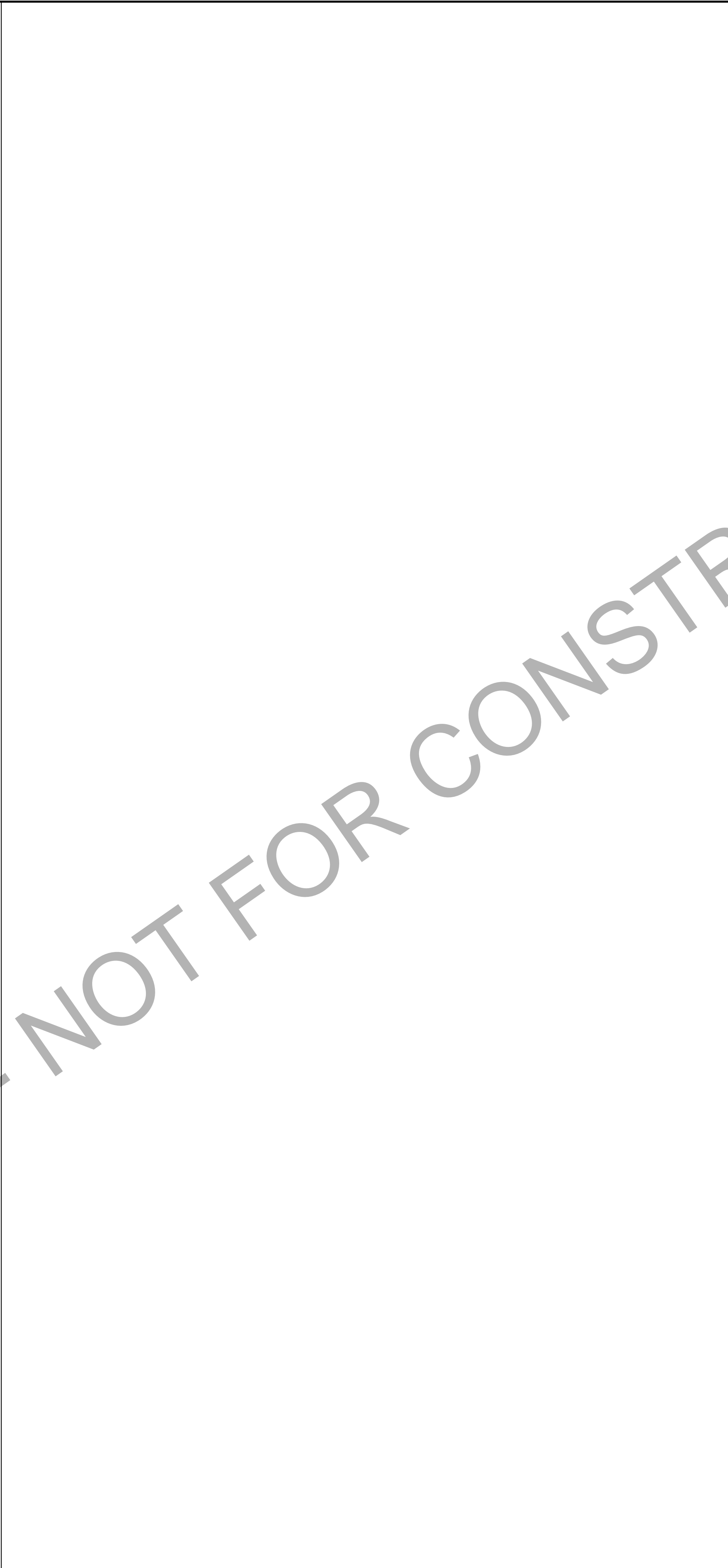
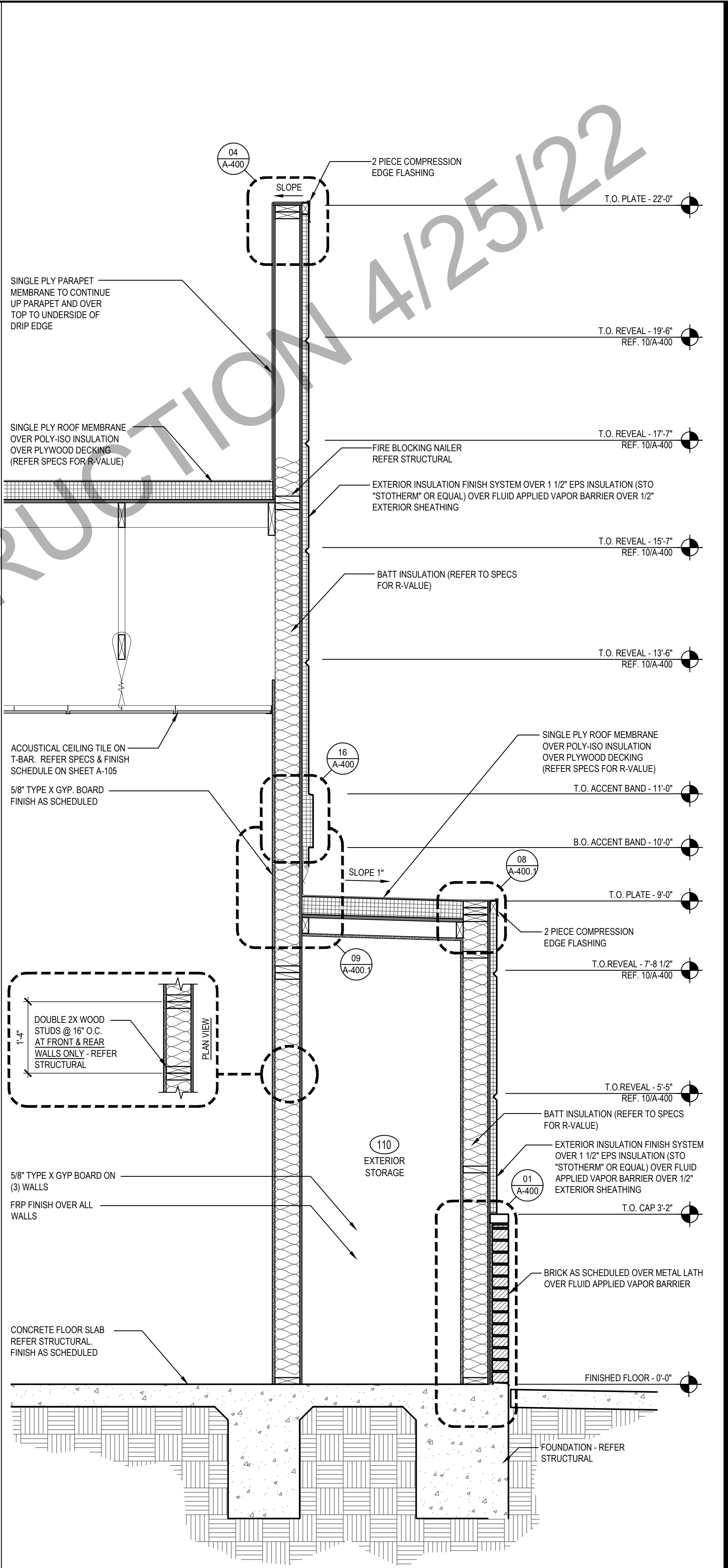


SECTION 1
Scale= 3/4" = 1'-0" A-303



NOT USED 2
Scale= 3/4" = 1'-0" A-303



SECTION 3
Scale= 3/4" = 1'-0" A-303



PANDA RESTAURANT GROUP INC.
1683 Walnut Grove Ave.
Rosemead, California
91770
Telephone: 626.799.9898
Facsimile: 626.372.8288

All ideas, designs, arrangement and plans indicated or represented by this drawing are the property of Panda Express Inc. and were created for use on this specific project. None of these ideas, designs, arrangements or plans may be used by or disclosed to any person, firm, or corporation without the written permission of Panda Express Inc.

REVISIONS:

ISSUE DATE:

1	03.04.2022 ISSUE FOR PERMIT

DRAWN BY: JDV

PANDA PROJECT #: S8-22-D8698
C&P PROJECT #: 2210806

CUHACI PETERSON
2600 Maitland Center Parkway
Suite #200
Maitland, FL 32751
P (407) 661-9100
F (407) 661-9101
c-p.com

03.04.2022



PANDA EXPRESS
TRUE WARM AND WELCOME 2200
3030 DERITA ROAD
CONCORD, NC 28027

A-303

WALL SECTIONS

TRUE WARM & WELCOME 2200 R4