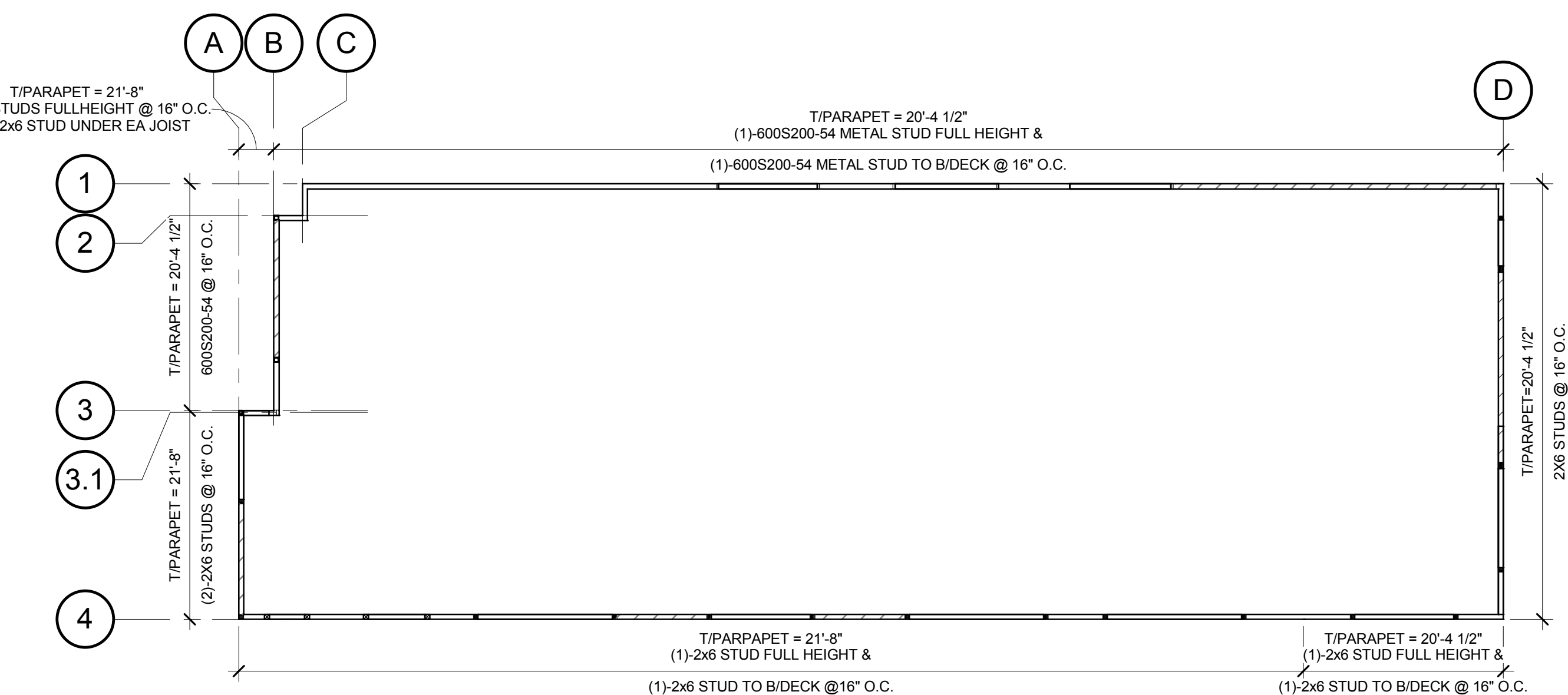
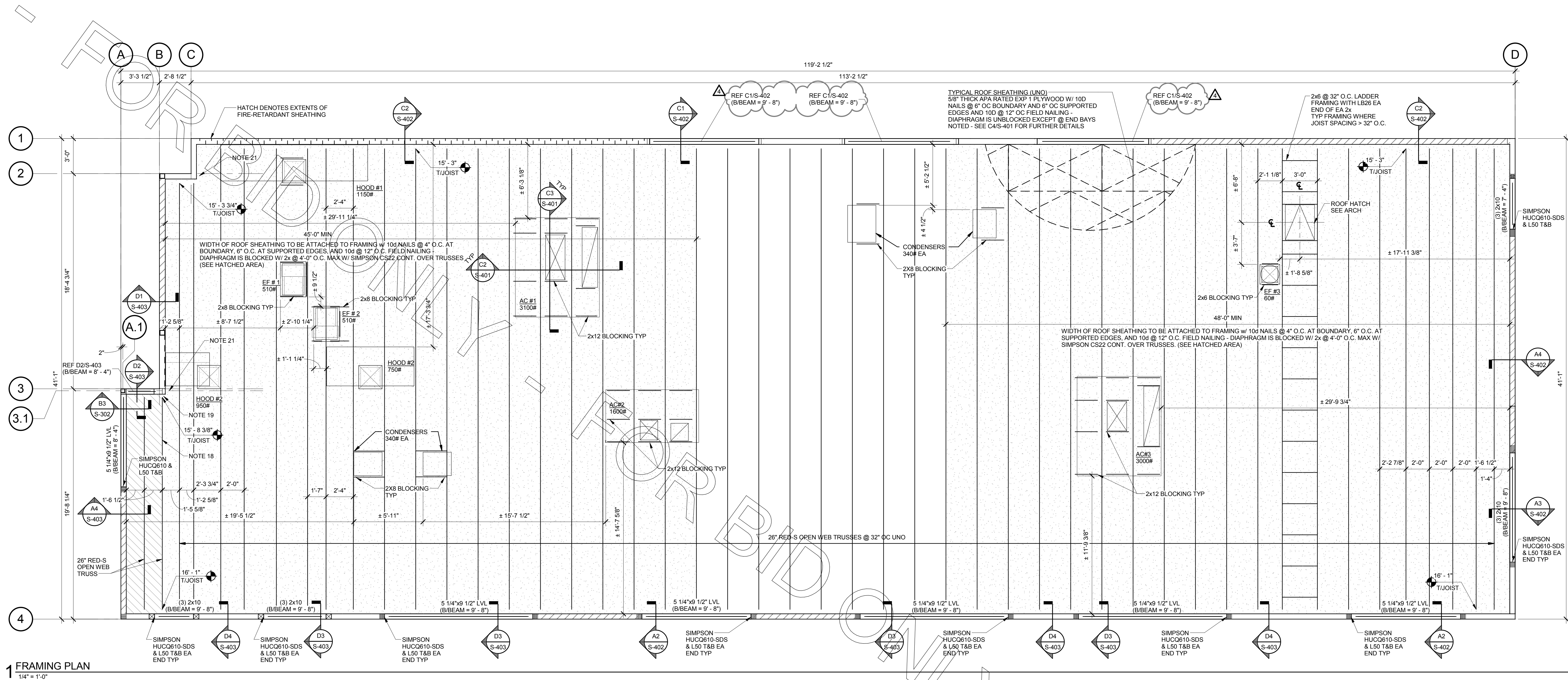


3/7/2018 11:28:54 AM



- (+xx-x) INDICATES TOP OF JOIST OR TRUSS ELEVATION.
- AT ALL (3) 2x HEADERS ABOVE WINDOW AND DOOR OPENINGS PROVIDE 1/2\"/>
- SEE DETAIL C4/S401 FOR ROOF NAILING.
- SEE C3/S302 FOR TYP. HANGER DETAILS.
- TRUSS AND JOIST MANUFACTURER SHALL DESIGN AND PROVIDE ALL JOISTS AND ERECTION, PERMANENT, AND UPLIFT BRIDGING.
- SPLICE LEDGERS PER DETAIL C1/S302.
- OPEN WEB TRUSSES, WOOD JOISTS, PSL AND LVL BEAMS SHALL BE BY REDBUILT, LLC 1-877-371-0445 - CONTACT: HENRY GRUESSEN.
- DIMENSIONS THIS SHEET ARE TO OUTSIDE FACE OF WOOD PARAPET STUD.
- ROOF TOP UNIT DIMENSIONS ARE TO INSIDE FACE OF CURB/OUTSIDE FACE OF WOOD PARAPET STUD.
- FOR ADDITIONAL NAILING REQUIREMENTS SEE SCHEDULE ON S601.
- ALL ANCHORS, CLIPS, STRAPS & ETC. WHICH ARE IN CONTACT WITH COPPER BASED TREATED WOOD, SUCH AS ACQ, CBA OR SBX, AND ARE LESS THAN 3/8\"/>
- ALL FASTENERS WHICH ARE IN CONTACT WITH COPPER BASED TREATED WOOD, SUCH AS ACQ, CBA OR SBX, AND ARE LESS THAN 3/8\"/>
- ALL DIMENSIONS TO ROOF TOP UNITS ARE APPROXIMATE. THE UNITS AND CURBS MUST BE LOCATED TO ALLOW PENETRATIONS TO AVOID CONFLICTS WITH FRAMING MEMBERS.
- SIMPSON CONNECTORS APPLIED TO STEEL COLUMNS SHALL BE SHOP WELDED.
- ALL WELDS SHALL BE SHOP WELDS. NO ON-SITE WELDING.
- SEE S601 FOR COMPONENTS AND CLADDING WIND LOADS FOR ROOF DESIGN.
- AT ALL ROOF DUCTWORK PENETRATIONS, PROVIDE 4\"/>
- ALIGN TRUSS W/ CORNER OF WALL. DESIGN TRUSS FOR 15K AXIAL LOAD.
- ATTACH TRUSS TO WALL TOP PLATE W/ (2) SIMPSON CMST 14 STRAPS. LAP MIN 30\"/>
- DENOTES 10d 2.5\"/>
- ALIGN BLOCKING W/ CORNER OF WALL.

### 3 FRAMING NOTES

N.T.S.

ROOF DESIGN CRITERIA	
DEAD LOADS:	LIVE LOADS: = 20 PSF
ROOFING = 5.0 PSF	WIND LOADS: = SEE S-209
PLYWOOD = 2.0 PSF	COMPONENTS AND
TRUSSES = 3.0 PSF	CLADDING DIAGRAM
CEILING = 2.0 PSF	EQUIPMENT LOAD
INSULATION = 1.0 PSF	NOT INCLUDED
MISC. = 1.0 PSF	ADD 150# PER HANGER
SPRINKLERS = 3.0 PSF	LOCATION OF HUNG
	KITCHEN SHELVEING.
DEAD LOAD = 17.0 PSF	
*ADD 6 PSF DL AT DINING ROOM FOR SUSPENDED SOFFIT.	

### 4 ROOF DESIGN CRITERIA

N.T.S.

STANDARD LINTEL SCHEDULE	
OPENING SIZE	LINTEL
UP TO 6'-0"	L4X4X5/16
6'-1 TO 8'-0"	L6X4X3/8 (LLV)
8'-1 TO 10'-0"	L6X4X3/8 (LLV)
10'-1 TO 12'-0"	L7X4X3/8 (LLV)

#### NOTES:

- PROVIDE MIN. 8" BEARING ON EACH SIDE OF OPENING.
- TYPICAL LINTEL SIZES U.N.O.
- SEE NOTE 2 OF ROOF NOTES FOR TYP. HEADERS, UNO ON PLANS & SECTIONS.

### 5 LINTEL SCHEDULE

N.T.S.



**Chick-fil-A**

**Chick-fil-A**  
5200 Buffington Road  
Atlanta, Georgia 30349-2998

**INTERPLAN**

ARCHITECTURE  
ENGINEERING  
INTERIOR DESIGN  
PROJECT MANAGEMENT  
604 COURTLAND STREET  
SUITE 100  
ORLANDO, FLORIDA 32804  
PH 407.645.5008  
FX 407.629.9124



**BRITT, PETERS**  
ASSOCIATES  
P.C.  
consulting engineers  
999 WATERSIDE DRIVE  
SUITE 2202  
NORFOLK, VA 23510  
PH 757.965.5710  
BP# 171143

SEAL: THIS DOCUMENT IS **NOT FOR CONSTRUCTION**  
UNLESS THE ARCHITECT'S  
SIGNATURE AND SEAL APPEAR BELOW:

**CHICK-FIL-A**

**Cherokee Place FSR**

115 Cherokee Place, Cartersville, GA 30121

**FSU# 00534**

REVISION SCHEDULE  
NO. DATE DESCRIPTION

4 01/31/18 Coordination Revisions

ENGINEER'S PROJECT # 171143  
PRINTED FOR BID  
DATE December 7, 2017  
DESIGNED BY WBU  
DRAWN BY JNU

Information contained on this drawing and in all digital files  
produced for above named project may not be reproduced in  
any manner without express written or verbal consent from  
authorized project representatives.

SHEET  
FRAMING PLAN

SHEET NUMBER

**S-231L**