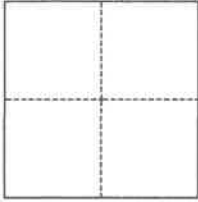


CORNER RECORD

Agency Index

BK 146 PG 36

Document Number CR 14787

City of OAKLAND County of ALAMEDA, CaliforniaBrief Legal Description MONUMENT AT INTERSECTION OF 94TH AVE & OLIVE ST**CORNER TYPE****COORDINATES (Optional)**

- ☐ Government Corner ☒ Control
☐ Meander ☐ Property
☐ Rancho ☐ Other

N. _____ E. _____

Elevation _____

Units ☐ Metric ☒ U.S. Survey Foot

Horizontal Datum _____

Zone _____ Epoch Date _____

Vertical Datum _____

☐ Complies with Public Resources Code §§8801-8819☐ Complies with Public Resources Code §§8890-8902

PLS Act Ref.:

☐ 8765(d)☒ 8771☐ 8773☐ Other:Corner/
Monument:☒ Left as found☐ Established☐ Rebuilt☒ Pre-Construction☐ Found and tagged☐ Reestablished☒ Referenced☐ Post-Construction

Narrative of corner identified and monument as found, set, reset, replaced, or removed:

☒ See sheet #2 for description(s):**SURVEYOR'S STATEMENT**

This Corner Record was prepared by me or under my direction in conformance with

the Professional Land Surveyors' Act on January 29, 2021Signed Joseph M. Brajkovich

P.L.S. or R.C.E. No.

5254**COUNTY SURVEYOR'S STATEMENT**This Corner Record was received AUG, OCT 14, 2021and examined and filed AUGUST 17, 2021Signed D. Ian Wilson

P.L.S. or R.C.E. No.

7010Title ALAMEDA COUNTY SURVEYOR

County Surveyor's Comment



LEGEND

#####

STREET ADDRESS

APN

ASSESSOR'S PARCEL NUMBER



CUT CROSS

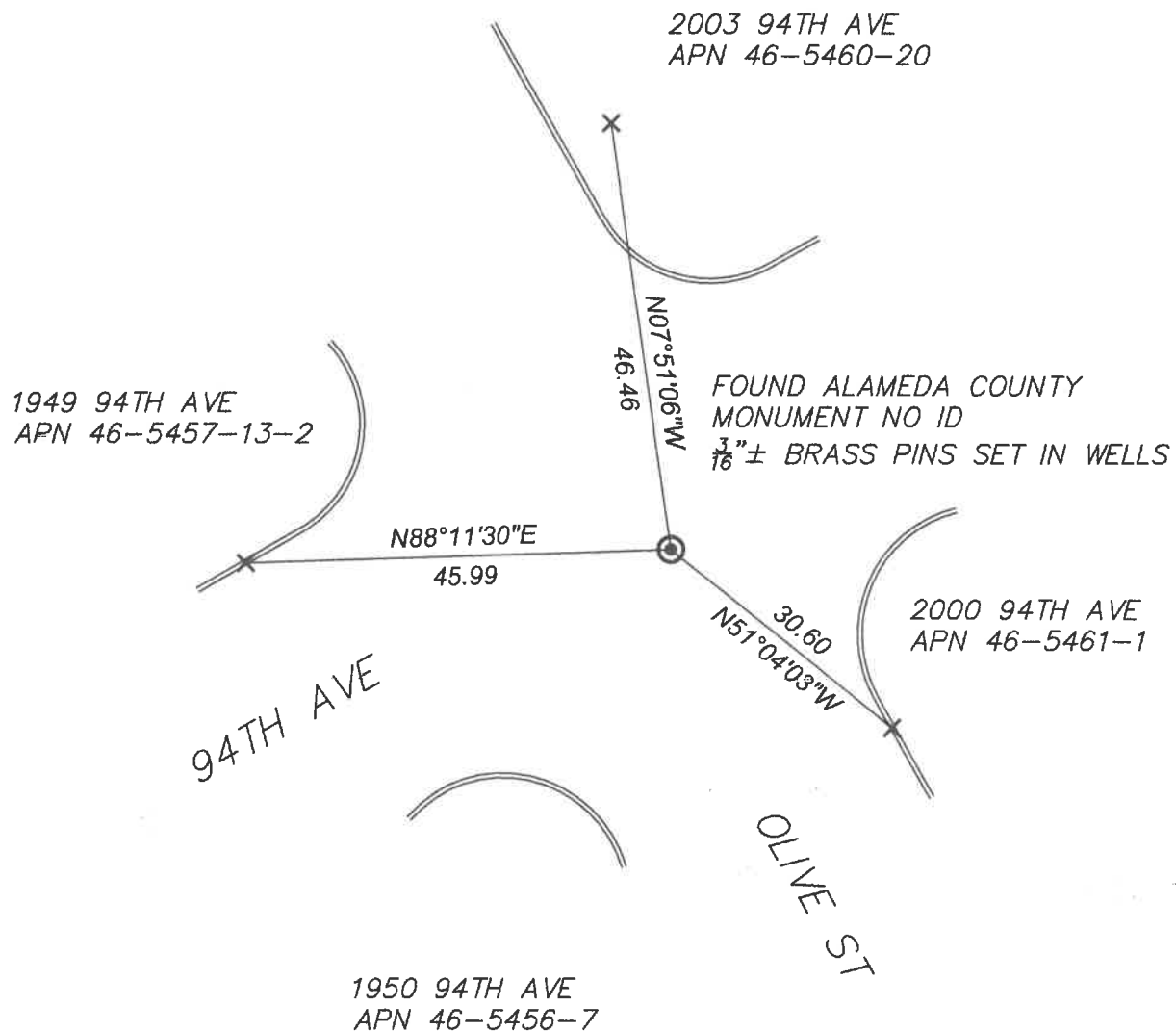


SET NAIL/WASHER



SURVEY MONUMENT

SCALE: 1" = 20'



20010