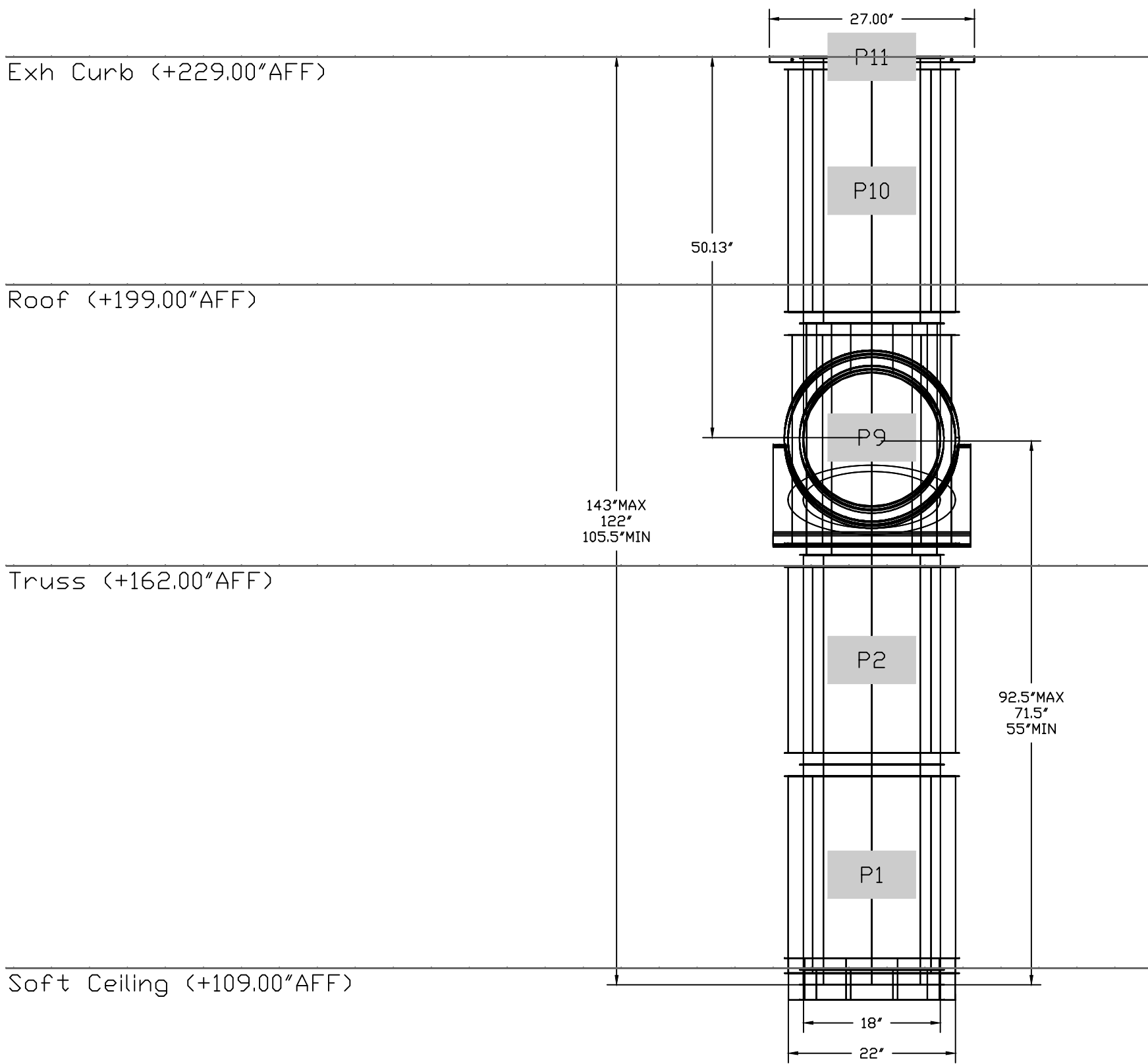
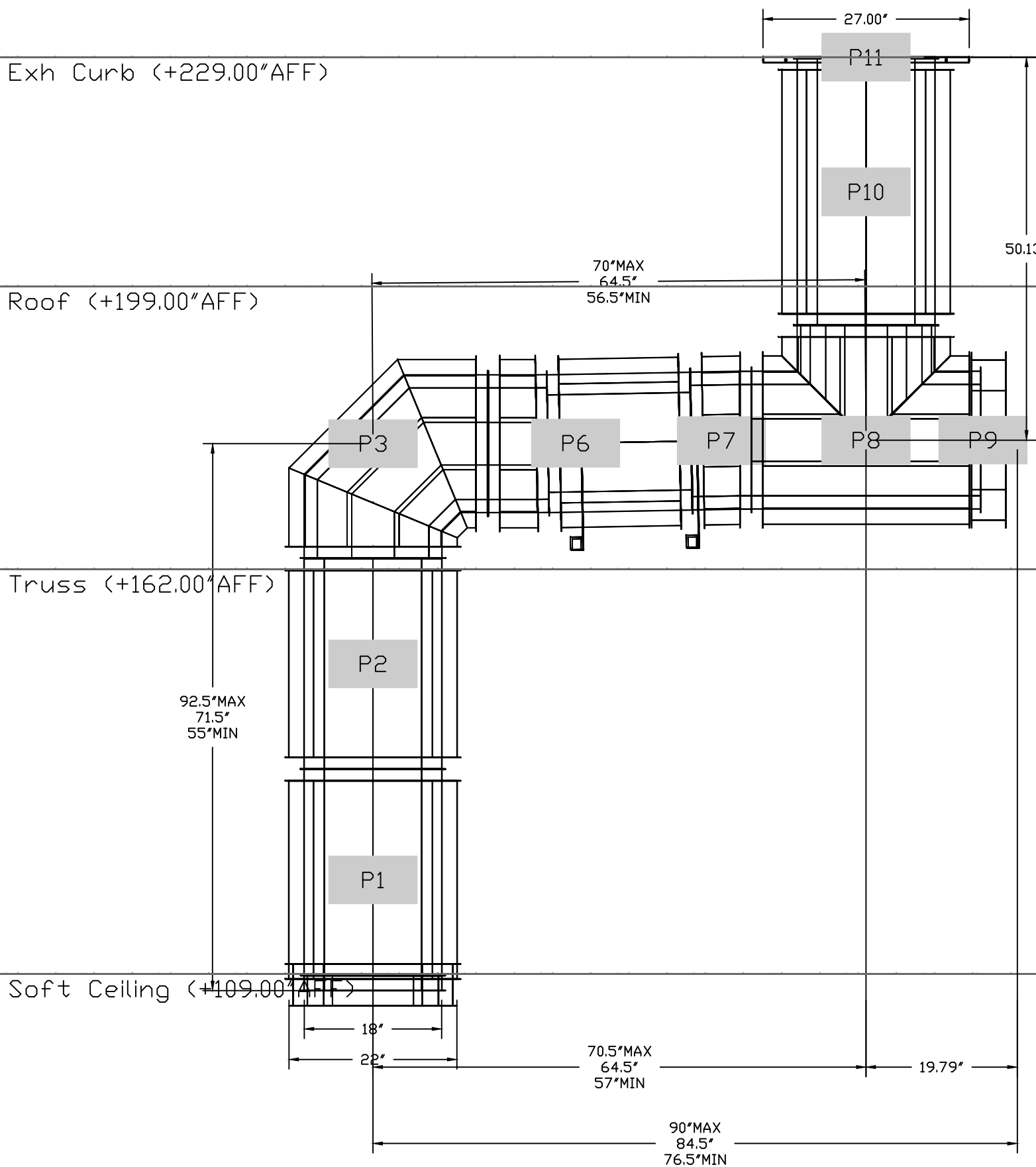


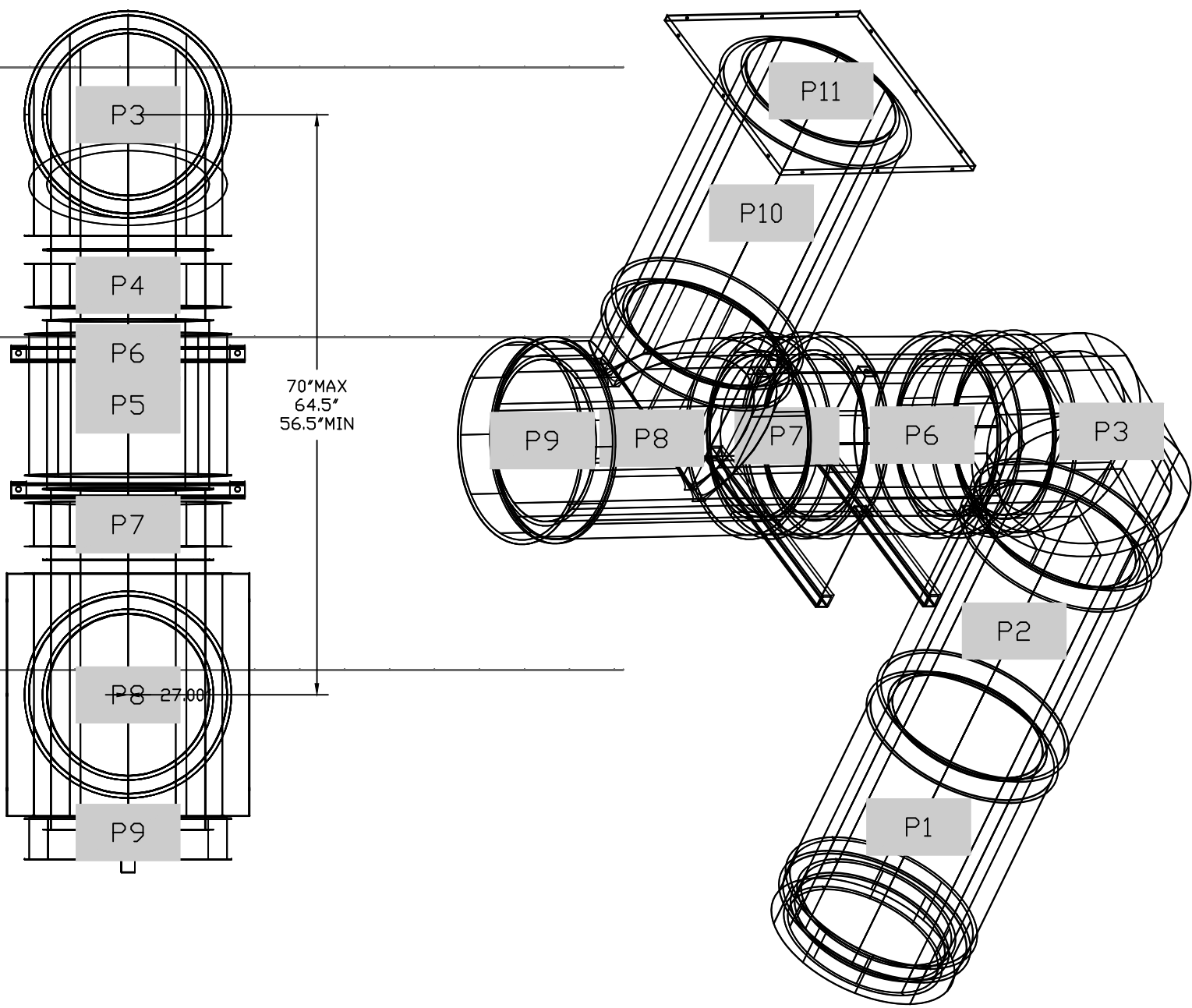
DUCTWORK #1 FRONT VIEW



DUCTWORK #1 SIDE VIEW



DUCTWORK #1 TOP VIEW DUCTWORK #1 SE VIEW



Floor (+0.00*AFF)

Floor (+0.00*AFF)

NOTE: UNLESS OTHERWISE STATED, PANDA RESTAURANT GROUP SHALL PROVIDE ALL EQUIPMENT ON THE FOLLOWING CAPTIVEAIRE SHEETS, INCLUDING: HOODS, FIRE SYTEM, EXHAUST FANS, SUPPLY FAN, BATHROOM FAN AND ELECTRICAL INTERLOCK PACKAGE

DOUBLE WALL DUCT BY MECHANICAL PLEASE USE CONTACT BELOW FOR PRICING

ANSUL GAS VALVE:

THE ANSUL GAS VALVE IS PROVIDED BY CAPTIVEAIRE SYSTEMS. CONTACT OUR OFFICE WITH THE VALVE SIZE 3 DAYS IN ADVANCE OF WHEN IT IS NEEDED ON SITE.

FOR QUESTIONS CALL THE CAPTIVEAIRE SOUTHERN CALIFORNIA OFFICE

3002 DOW AVENUE, SUITE 410 TUSTIN, CA 92780 TEL: 714-957-1500 EMAIL: REG86@CAPTIVEAIRE.COM

REVISIONS

DESCRIPTION	DATE:
△	
△	
△	
△	

www.captiveaire.com

Southern California Office

3002 Dow Ave., Suite 410, Tustin, CA 92780 PHONE: (714) 957-1500 FAX: (919) 227-5975 EMAIL: reg86@captiveaire.com

Panda Express - Greenville SC

GREENVILLE, SC, 29609

DATE: 5/13/2022

DWG.#: 5472710

DRAWN BY: AH-86

SCALE: 3/4" = 1'-0"

MASTER DRAWING

SHEET NO. 10



PANDA RESTAURANT GROUP INC.
1683 Walnut Grove Ave.
Rosemead, California 91770
Telephone: 626.799.9898
Facsimile: 626.372.8288

All ideas, designs, arrangement and plans indicated or represented by this drawing are the property of Panda Express Inc. and were created for use on this specific project. None of these ideas, designs, arrangements or plans may be used by or disclosed to any person, firm, or corporation without the written permission of Panda Express Inc.

REVISIONS:	
ISSUE DATE:	
1	05.18.2022 ISSUE FOR PERMIT
2	06.22.2022 ISSUE FOR BID

DRAWN BY: SDT

PANDA PROJECT #: - S823-D20180
C&P PROJECT #: - 2220195

 **CUHACI PETERSON**

2600 Maitland Center Parkway
Suite #200
Maitland, FL 32751
P (407) 661-9100
F (407) 661-9101
c-p.com
Panda Express Certificate #PA-C00026

06.22.2022

NOT FOR CONSTRUCTION

PANDA EXPRESS

TRUE WARM & WELCOME 2500
N PLEASANTBURG DR & FURMAN HALL DR
GREENVILLE, SC 29609

M-409

HOOD DETAIL PLAN

TRUE WARM & WELCOME 2500 R2