

# GAYLA MANOR

A PORTION OF SECTION 2, T.6 N., R.12 E., M.D.M.  
AMADOR COUNTY, CALIFORNIA

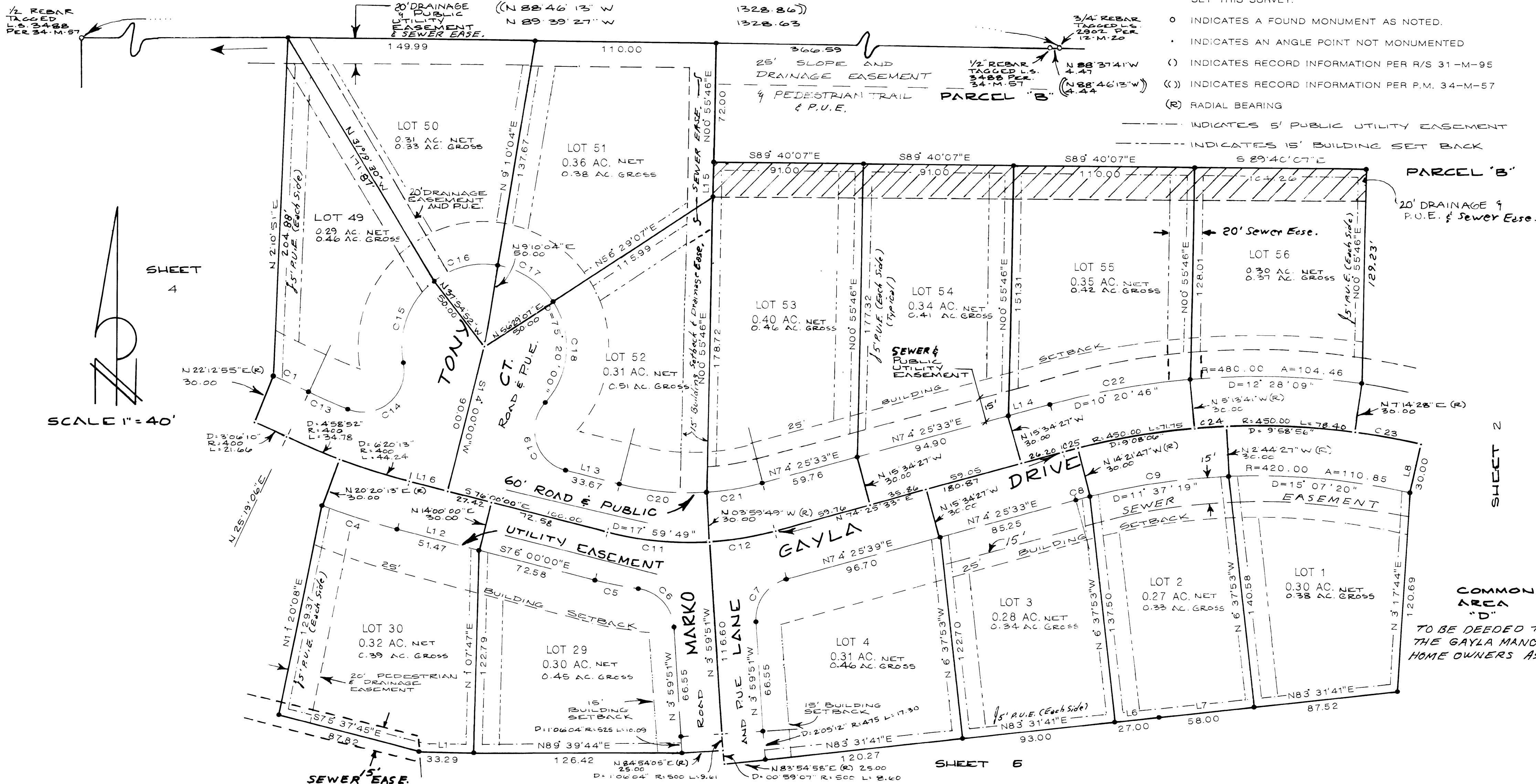
LAZZARETO  
149 O.R. 251

## NOTES AND LEGEND

- INDICATES A 5/8" REBAR MARKED L.S.4222 SET THIS SURVEY.
- INDICATES A FOUND MONUMENT AS NOTED.
- INDICATES AN ANGLE POINT NOT MONUMENTED
- ( ) INDICATES RECORD INFORMATION PER R/S 31-M-95
- (( )) INDICATES RECORD INFORMATION PER P.M. 34-M-57
- (R) RADIAL BEARING

----- INDICATES 5' PUBLIC UTILITY EASEMENT

----- INDICATES 15' BUILDING SET BACK



No.	Direction	Length
L 1	S88° 57'36"E	33.29
L 2	N 4° 32'53"W	10.09
L 3	N86° 00'09"E	25.00
L 4	N86° 00'09"E	25.00
L 5	S 5° 02'26"E	17.30
L 6	N83° 31'41"E	27.00
L 7	N83° 31'41"E	58.00
L 8	N12° 22'52"E	30.00
L 9	N12° 22'52"E	30.00
L 10	N25° 19'06"E	30.00

No.	Direction	Length
L 11	N25° 19'06"E	30.00
L 12	S76° 00'00"E	51.47
L 13	S76° 00'00"E	33.67
L 14	N74° 25'33"E	26.20
L 15	N00° 55'46"E	21.00
L 16	S76° 00'00"E	24.05

No.	Delta	Radius	Arc Length
C 1	5° 08'24"	480.00	43.06
C 2	4° 58'52"	430.00	37.38
C 3	6° 36'42"	430.00	49.62
C 4	6° 20'13"	430.00	47.56
C 5	6° 41'21"	230.00	26.85
C 6	78° 41'31"	25.00	34.34
C 7	78° 41'34"	25.00	34.34
C 8	1° 12'40"	420.00	8.88
C 9	1° 37'19"	420.00	85.19
C 10	1° 19'06"	400.00	79.02

No.	Delta	Radius	Arc Length
C 11	17° 59'49"	200.00	62.82
C 12	1° 34'38"	200.00	40.41
C 13	4° 02'42"	370.00	26.12
C 14	122° 43'09"	25.00	53.55
C 15	63° 31'53"	50.00	55.44
C 16	47° 04'56"	50.00	41.09
C 17	47° 19'03"	50.00	41.29
C 18	75° 20'00"	50.00	65.74
C 19	117° 49'06"	25.00	51.41
C 20	17° 59'49"	170.00	53.40
C 21	1° 34'38"	170.00	34.35
C 22	1° 20'46"	480.00	86.68
C 23	5° 08'24"	450.00	40.37
C 24	2° 29'13"	450.00	19.53
C 25	1° 12'40"	450.00	6.51

SHEET 5 OF 9