

# TRACT 6348

PORTION OF THE RANCHO SAN ANTONIO  
(ANTONIO MARIA PERALTA, ET. AL)

CITY OF OAKLAND  
ALAMEDA COUNTY, CALIFORNIA

HUMANN COMPANY  
1021 BROWN AVENUE  
PHONE: 925-283-5000

CIVIL ENGINEERING LAND SURVEYING  
LAFAYETTE, CALIFORNIA  
FAX: 925-283-3578

SCALE: 1" = 30'

FEBRUARY, 1999

PROPERTY CORNERS  
SET & SHOWN

FOUND STANDARD MONUMENT  
(TYP)

★ USE WITH CAUTION ★  
THIS IS A PUBLIC WORKS DEPARTMENT  
WORKING COPY OF AN OFFICIAL MAP  
ON FILE IN THE OFFICE OF THE COUNTY  
ENGINEER, COUNTY OF ALAMEDA. OF-  
FICIAL INFORMATION OR CALCULATIONS  
MAY HAVE BEEN ADDED HEREON.

## LEGEND

- EXISTING BOUNDARY
- NEW LOT LINE
- MONUMENT LINE
- FOUND MONUMENT
- PROPERTY CORNER
- SET 5/8" REBAR & CAP, LS 5452

## BASIS OF BEARINGS

BEARINGS SHOWN HEREON WERE TAKEN FROM  
MONUMENTS IN CRESTMONT DRIVE AS SHOWN ON  
TRACT 1710, FILED OCTOBER 4, 1956 IN MAP BOOK  
37 PAGE 75, ALAMEDA COUNTY RECORDERS OFFICE.  
BEARING TAKEN AS NORTH 25°40'00" WEST SHOWN  
HEREON.

BUXTON  
91-284957

LOT 5  
22,286± S.F.

LOT 4  
9,085± S.F.

LOT 3  
8,764± S.F.

LOT 2  
8,054± S.F.

LOT 1  
8,469± S.F.

TRACT

1710

A.P. No. 29-1151-055

SHEET 2 OF 2

APR 10 2000

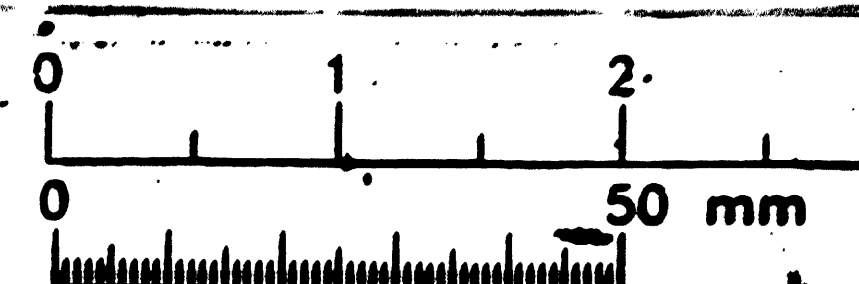
Filed 3-23-00

250/67

99008  
AK 250 12 67

397

FOR REDUCED ENGLISH PLANS  
ORIGINAL SCALE IS IN INCHES  
FOR REDUCED METRIC PLANS  
ORIGINAL SCALE IS IN METERS



67