

CITY OF HUNTINGTON BEACH
DEPARTMENT OF PUBLIC WORKS
SAYBROOK LN. REHABILITATION

GENERAL NOTES:

- THE EXISTENCE AND LOCATION OF ANY UNDERGROUND UTILITY PIPES OR STRUCTURES SHOWN ON THESE PLANS ARE BASED ON A SEARCH OF THE AVAILABLE RECORDS. UTILITY SURFACE FEATURES ARE BASED ON FIELD OBSERVATION. THE CONTRACTOR SHALL TAKE DUE PRECAUTIONARY MEASURES TO PROTECT ALL UTILITY LINES, SHOWN OR NOT SHOWN ON THESE PLANS.
- PRIOR TO THE START OF CONSTRUCTION, THE CONTRACTOR MUST COMPLETE AND SUBMIT TO THE AGENCY THE UNDERGROUND SERVICE ALERT IDENTIFICATION FORM WHICH HAS BEEN PROVIDED IN THE PROJECT SPECIFICATIONS.
- ALL WORK SHALL BE CONSTRUCTED IN ACCORDANCE WITH THE AGENCY'S STANDARD PLANS, PROJECT PLANS, SPECIFICATIONS, AND CONTRACT DOCUMENTS. THE CONTRACTOR SHALL KEEP A COPY OF THIS INFORMATION ON THE JOB SITE.
- A PRE-CONSTRUCTION MEETING SHALL BE HELD A MINIMUM OF 48 HOURS PRIOR TO THE COMMENCING OF WORK.
- THE CONTRACTOR SHALL NOTIFY THE AGENCY'S CONSTRUCTION MANAGER, DAVID FAIT, @ (714) 536-5431, A MINIMUM OF 5 WORKING DAYS PRIOR TO THE START OF CONSTRUCTION AND 48 HOURS IN ADVANCE FOR PROJECT INSPECTION AND SURVEY SERVICES. SURVEY STAKING SHALL BE PROVIDED BY THE AGENCY.
- PROJECT STATIONING REFERS TO THE CENTERLINE OF STREET.
- STOCKPILING OF REMOVAL MATERIAL WILL NOT BE ALLOWED IN OR AROUND THE PROJECT SITE.
- DOORKNOB NOTIFICATION OF RESIDENTS AND BUSINESS OWNERS DIRECTLY AFFECTED BY CONSTRUCTION AND THE POSTING OF "NO PARKING" NOTIFICATION SIGNS SHALL OCCUR A MINIMUM OF 48 HOURS PRIOR TO CONSTRUCTION.
- PUBLIC AND/OR PRIVATE IMPROVEMENTS TO BE PROTECTED IN PLACE ARE NOT LIMITED TO THOSE SPECIFICALLY CALLED OUT ON THE PLANS. ALL EXISTING IMPROVEMENTS WHICH ARE NOT IDENTIFIED FOR REMOVAL AND/OR RECONSTRUCTION ON THE PLANS AND/OR SPECIFICATIONS SHALL BE PROTECTED IN PLACE AT THE CONTRACTOR'S EXPENSE PER SECTION 400-1 OF THE SPECIFICATIONS.
- PRIOR TO THE END OF EACH WORKING DAY, THE CONTRACTOR SHALL CONSTRUCT THE A.C. BASE COURSE SECTION REQUIRED WITHIN EACH AREA OF PAVEMENT EXCAVATED DURING THAT WORKING DAY, UNLESS OTHERWISE PERMITTED BY THE CITY ENGINEER, TRAVEL LANES SHALL BE OPENED TO TRAFFIC AT THE END OF EACH WORKING DAY PER THE PROJECT SPECIFICATIONS.

NPDES GENERAL NOTES:

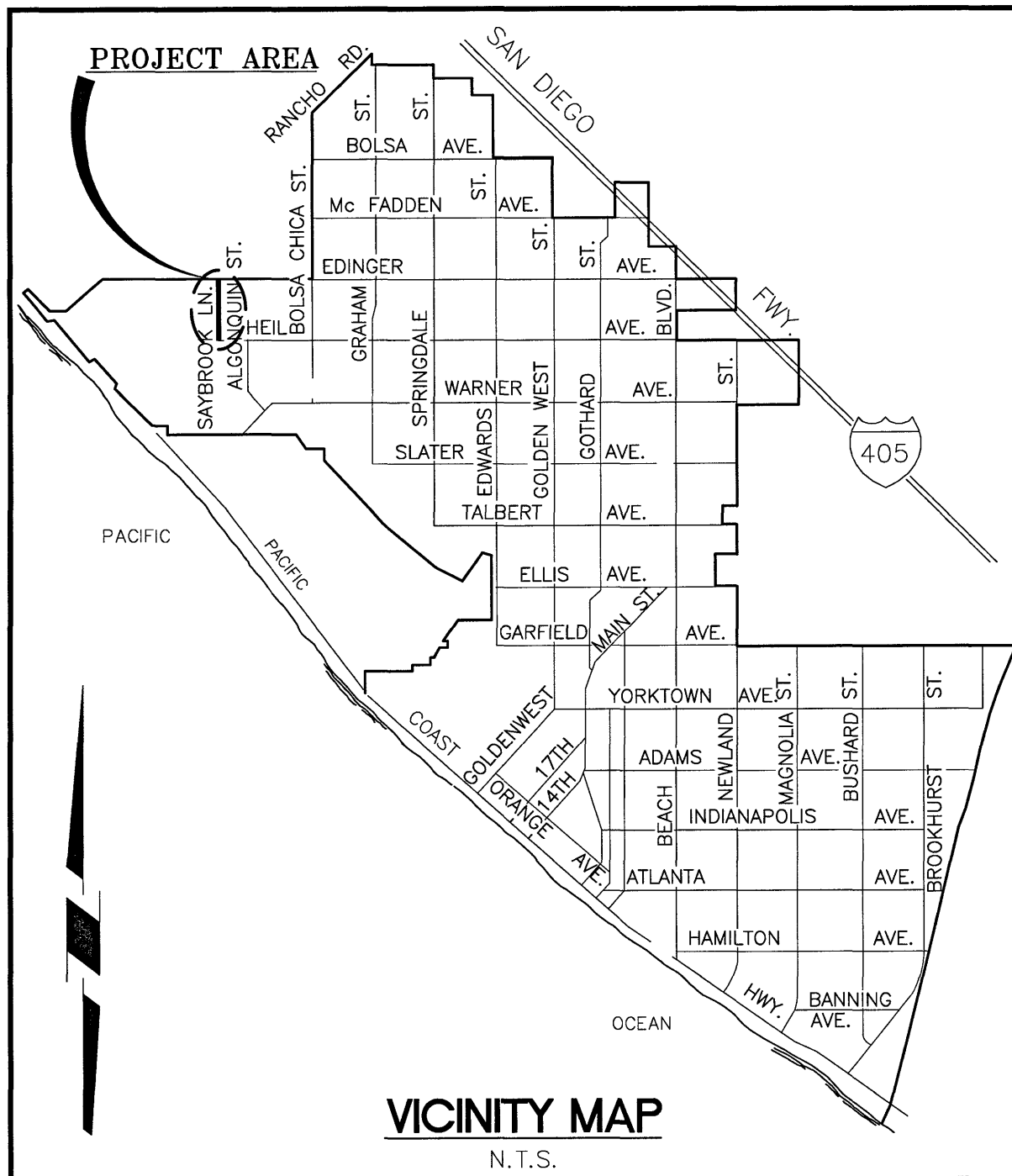
- SEDIMENT FROM AREAS DISTURBED BY CONSTRUCTION SHALL BE RETAINED ON SITE USING INDUSTRY ACCEPTED BEST MANAGEMENT PRACTICES (BMPs). THESE BMPs SHALL BE INSTALLED PRIOR TO ANY CONSTRUCTION ACTIVITY SUCH AS GRADING THAT MAY CAUSE SOIL DISTURBANCE. THESE BMPs ARE TO BE MAINTAINED THROUGH THE ENTIRETY OF THE PROJECT OR UNTIL ALL LOOSE SEDIMENT HAS BEEN STABILIZED.
- STOCKPILES OF SOIL SHALL BE PROPERLY CONTAINED TO MINIMIZE SEDIMENT TRANSPORT FROM THE SITE TO STREETS, DRAINAGE FACILITIES AND ADJACENT PROPERTIES VIA RUNOFF, VEHICLE TRACKING, OR WIND. STOCKPILED MATERIAL SHALL BE NO MORE THAN 6 FEET IN HEIGHT AND SHALL BE COMPLETELY COVERED WITH A SECURE IMPERMEABLE COVER AT THE END OF EACH WORK DAY. ALL STOCKPILES SHALL BE LOCATED AWAY FROM ANY STORM DRAIN INLETS AND AWAY FROM ANY STORM WATER CONVEYANCE STRUCTURES. AT NO TIME SHALL ANY RAW MATERIAL BE STAGED OR STOCKPILED ON CITY STREETS, SIDEWALKS, AND/OR GUTTERS WITHOUT A VALID OBSTRUCTION PERMIT.
- APPROPRIATE BMPs FOR CONSTRUCTION-RELATED MATERIALS, WASTES, SPILLS OR RESIDUES SHALL BE IMPLEMENTED TO MINIMIZE TRANSPORT FROM THE SITE TO STREETS, DRAINAGE FACILITIES, AND ADJOINING PROPERTY BY WIND OR RUNOFF.
- RUNOFF FROM EQUIPMENT AND VEHICLE WASHING SHALL BE CONTAINED ON THE CONSTRUCTION SITE AND SHALL NOT BE DISCHARGED TO RECEIVING WATERS OR TO THE STORM DRAIN SYSTEM.
- CONCRETE WASH OUT WATER SHALL BE CONTAINED IN A WATER-TIGHT DEVICE TO PREVENT CEMENT DEPOSITION ONTO THE GROUND AND RUNOFF INTO STREETS, DRAINAGE FACILITIES, AND RECEIVING WATERS. ALL CONCRETE SLURRY FROM SAW-CUTTING IS TO BE RECOVERED IMMEDIATELY AND NOT ALLOWED TO DRY INTO RESIDUE/STAIN. ALL SAW-CUTTING ACTIVITIES SHALL BE CONDUCTED BY A TWO-PERSON TEAM WITH ONE PERSON CUTTING AND THE SECOND VACUUMING THE SLURRY CONCURRENTLY. ALL CATCH BASINS/STORM DRAIN INLETS WITHIN 100-FT DOWNSTREAM OF WORKING AREA MUST BE PROTECTED PRIOR TO COMMENCING CONSTRUCTION ACTIVITIES AND FILTER FABRIC IS TO BE REMOVED IF GREATER THAN 40% CHANCE OF RAIN IS PREDICTED.
- ALL CONSTRUCTION CONTRACTOR AND SUBCONTRACTOR PERSONNEL ARE TO BE MADE AWARE OF THE REQUIRED BMPs AND GOOD HOUSEKEEPING MEASURES FOR THE PROJECT SITE AND ANY ASSOCIATED CONSTRUCTION STAGING AREAS.
- AT THE END OF EACH WORK DAY, ALL CONSTRUCTION DEBRIS AND WASTE MATERIALS SHALL BE COLLECTED AND PROPERLY DISPOSED IN COVERED TRASH OR RECYCLE BINS.
- CONSTRUCTION SITES SHALL BE MAINTAINED IN SUCH A CONDITION THAT STORMWATER DOES NOT CARRY WASTES OR POLLUTANTS OFF THE SITE. DISCHARGES OF MATERIALS OTHER THAN STORMWATER (NON-STORMWATER DISCHARGES) ARE PROHIBITED EXCEPT AS AUTHORIZED BY AN INDIVIDUAL NPDES PERMIT OR THE STATEWIDE GENERAL CONSTRUCTION STORMWATER PERMIT.
- ALL UNPAVED CONSTRUCTION ENTRANCES AND EXITS SHALL BE PROTECTED USING AN EFFECTIVE COMBINATION OF TRACKING CONTROL BMPs TO MINIMIZE AND/OR ELIMINATE OFF-SITE TRACKING OF SEDIMENT. THESE BMPs SHALL BE MAINTAINED AND INSPECTED DAILY.
- ALL TEMPORARY PORTABLE RESTROOMS MUST HAVE A CATCHMENT PAN AND MUST BE LOCATED AT LEAST 50 FEET AWAY FROM ANY STORM DRAIN INLETS.
- POLLUTANTS ARE ANY SUBSTANCES INTRODUCED INTO THE ENVIRONMENT THAT ADVERSELY AFFECTS THE USEFULNESS OF A RESOURCE. POTENTIAL POLLUTANTS INCLUDE, BUT ARE NOT LIMITED TO: SEDIMENT; SOLID OR LIQUID CHEMICALS SUCH AS: PAINTS, STAINS, SEALANTS, SOLVENTS, DETERGENTS, GLUES, LIME, PESTICIDE, HERBICIDE, FERTILIZERS, WOOD PRESERVATIVES AND ASBESTOS FIBERS, PAINT FLAKES OR STUCCO FRAGMENTS; FUELS, OILS, LUBRICANTS, AND HYDRAULIC, RADIATOR OR BATTERY FLUIDS; CONCRETE, AND RELATED CUTTING OR CURING RESIDUES; FLOATABLE WASTES; WASTES FROM ENGINE / EQUIPMENT STEAM CLEANING OR CHEMICAL DEGREASING; WASTES FROM STREET CLEANING; AND SUPER-CHLORINATED POTABLE WATER FROM LINE FLUSHINGS AND TESTING.
- DURING CONSTRUCTION, DISPOSAL OF SUCH MATERIALS SHOULD OCCUR IN A SPECIFIED AND CONTROLLED MANNER. A DESIGNATED TEMPORARY AREA ON-SITE SHALL BE PHYSICALLY SEPARATED FROM POTENTIAL STORMWATER RUNOFF, WITH ULTIMATE DISPOSAL IN ACCORDANCE WITH LOCAL, STATE AND FEDERAL REQUIREMENTS.
- DISCHARGING CONTAMINATED GROUNDWATER, PRODUCED BY DEWATERING GROUNDWATER THAT HAS INFILTRATED INTO THE CONSTRUCTION SITE IS PROHIBITED. DISCHARGING OF CONTAMINATED SOILS VIA SURFACE EROSION IS ALSO PROHIBITED. DISCHARGING NON-CONTAMINATED GROUNDWATER PRODUCED BY DEWATERING ACTIVITIES REQUIRES A NATIONAL POLLUTANT DISCHARGE ELIMINATION SYSTEM (NPDES) PERMIT FROM THE RESPECTIVE STATE REGIONAL WATER QUALITY CONTROL BOARD.
- DISCHARGES OF STORM WATER FROM CONSTRUCTION SITES SHALL NOT BE LADEN WITH SEDIMENT. ALL STORM WATER DISCHARGES MUST BE RELATIVELY FREE OF SEDIMENT.
- ALL CONTRACTORS AND CONSTRUCTION PERSONNEL SHALL MEET THE REGULATORY CONSTRUCTION REQUIREMENTS ON THE PROJECT SITE IN COMPLIANCE WITH THE CITY'S MUNICIPAL CODE 14.25, STORMWATER AND URBAN RUNOFF MANAGEMENT AND MUNICIPAL CODE 17.05, GRADING AND EXCAVATION CODE.

FROM HEIL AVE. AND EDINGER AVE.
STA. 12+45 TO STA. 36+71
CRAL-5181(195)
C.C. No. 1690

APPROVED:

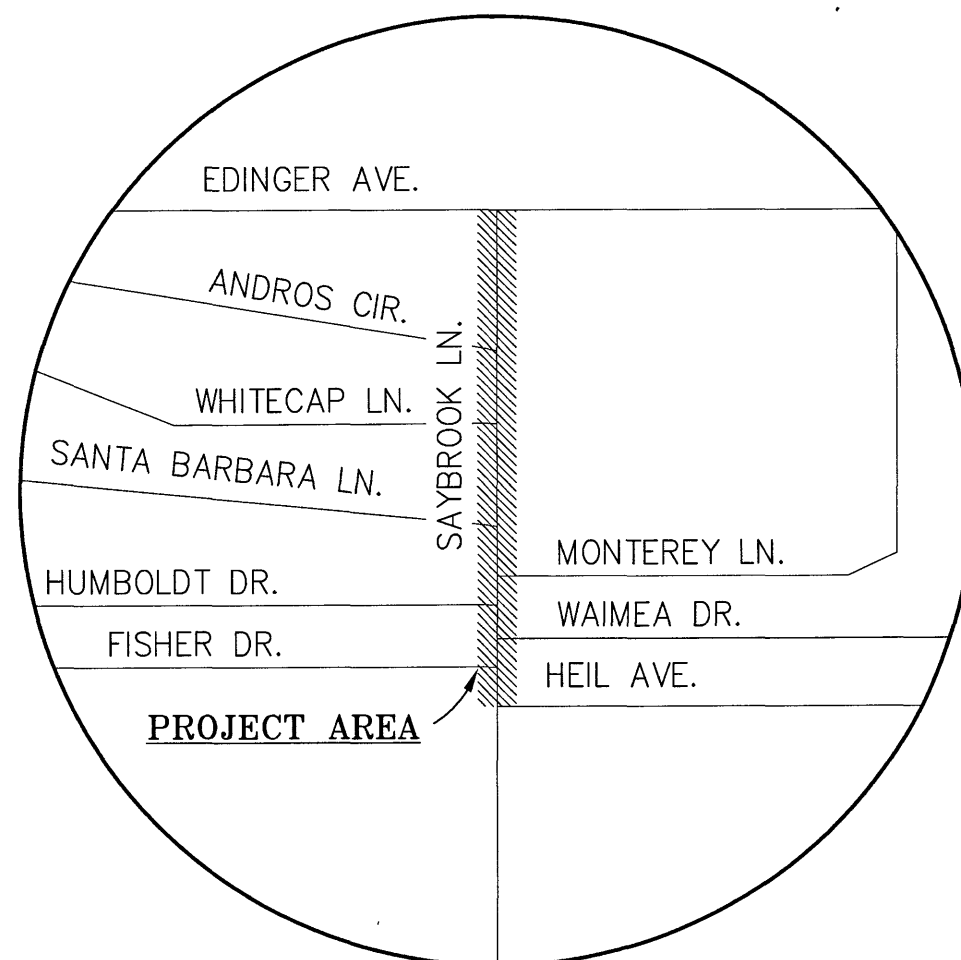
SEAN CRUMBY, P.E.
DIRECTOR OF PUBLIC WORKS

DATE



VICINITY MAP

N.T.S.



LOCATION MAP

N.T.S.

BENCHMARKS AND BASIS OF BEARINGS:

HORIZONTAL CONTROL:

BASIS OF BEARING = N27°07'06"W
BETWEEN ORANGE COUNTY SURVEYORS (OCS) GPS STATION 5101
(N 2211260.561, E 6014306.196, 1991.35 EPOCH) DESCRIBED AS A PUNCHED HUNTINGTON BEACH BRASS DISK, DOWN 0.5 IN A STANDARD WELL
MONUMENT LOCATED AT THE CENTERLINE INTERSECTION OF HEIL AVENUE AND ALGONQUIN STREET, AND OCS GPS STATION 5117R2
(N 2213895.447, E 6012956.786, 1991.35 EPOCH) DESCRIBED AS A PUNCHED SPIKE & WASHER STAMPED "GPS 5117 R2", FLUSH AT THE CENTERLINE INTERSECTION OF SAYBROOK LANE AND EDINGER AVENUE.

VERTICAL CONTROL:

ELEVATION = 9.707, NAVD 88, 2005 LEVEL YEAR
OCS BENCHMARK DESIGNATION: HB-240-75
DESCRIBED AS A 3 3/4" ALUMINUM BENCHMARK DISK SET IN THE TOP OF A 4"x4" CONCRETE POST. MONUMENT IS LOCATED ON THE SOUTHEAST CORNER OF THE INTERSECTION OF EDINGER AVENUE AND MONTEREY LANE, 52FT EASTERLY OF THE CENTERLINE OF MONTEREY LANE AND 48FT SOUTHERLY OF THE CENTERLINE OF EDINGER AVENUE.
MONUMENT IS SET LEVEL WITH THE WALK.

STATIONING CONTROL:

HELD 10+00 AT THE CENTERLINE INTERSECTION OF SAYBROOK LANE AND HEIL AVENUE.
STATIONS INCREASE NORTHERLY.

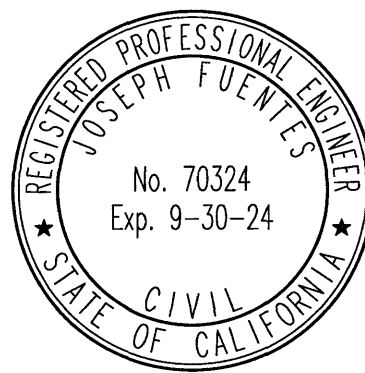
CONSTRUCTION NOTES:

- | | QTY |
|--|-------------------------|
| 1 PROTECT IN PLACE | - |
| 2 REMOVE TREE AND ROOTS; GRIND TREE STUMP AND ROOTS TO 24" BELOW TOP OF SIDEWALK/GRADE. PULL OUT ALL ROOTS WITHIN PROPOSED IMPROVEMENTS. | 23 EA |
| 3 REMOVE STUMP AND ROOTS (NO TREE, ONLY STUMP AT THIS LOCATION); GRIND TREE STUMP AND ROOTS TO 24" BELOW TOP OF SIDEWALK/GRADE. PULL OUT ALL ROOTS WITHIN PROPOSED IMPROVEMENTS. | 2 EA |
| 4 FURNISH AND PLANT NEW 24" BOX TREE, KING PALM - ARCHONTOPHOENIX ALEXANDRAE, PER HB STD. PLANS 714, 715, 716, 718 & 719 AS SHOWN ON PLANS. (ITEM INCLUDES EXISTING LANDSCAPE AND IRRIGATION REMOVAL TO ACCOMMODATE NEW TREE; REPLACEMENT OF IRRIGATION IN KIND; BACKFILLING WITH CLASS A TOP SOIL AND INSTALLATION OF ARBOR-GARD OR APPROVED EQUAL AT BASE OF NEW TREE) | 25 EA |
| 5 SAWCUT AND REMOVE EXISTING SIDEWALK AND CONSTRUCT TREE WELL WITH SIDEWALK PER DETAIL ON SHEET 5. (ITEM INCLUDES REMOVAL OF SIDEWALK, 82 SF OF NEW SIDEWALK, NON-CHEMICAL WEED CONTROL BARRIER TO BE DUPONT LANDSCAPE MAX OR APPROVED EQUAL AND MULCH.) | 25 EA |
| 6 REMOVE AND RECONSTRUCT SIDEWALK PER HB STD PLAN 207. | 5,525 SF |
| 7 REMOVE AND RECONSTRUCT CURB AND GUTTER PER HB STD. PLAN 202 (CF= 8"). (ITEM INCLUDES CMB, SLOT PAVEMENT AND LOT DRAIN.) | 980 LF |
| 8 REMOVE AND RECONSTRUCT DRIVEWAY CURB & GUTTER PER HB STD. PLAN 209 AND DETAIL ON SHEET 5. (ITEM INCLUDES CMB, SLOT PAVEMENT, AND LOT DRAIN.) | 53 LF |
| 9 REMOVE AND RECONSTRUCT CURB ACCESS RAMP, DEPRESSED CURB, AND GUTTER PER CALTRANS STD PLAN RSP 488A FROM BCR TO ECR. (CASE SHOWN ON PLAN). (INCLUDES ALL APPURTENANCES, CURB GUTTER, DEPRESSED CURB, SIDEWALK, DOMES, RETAINING CURB, CMB, SLOT PAVEMENT, AND ALL ITEMS FROM ECR TO BCR NECESSARY TO COMPLETE THE WORK IN PLACE.) | 9 EA |
| 10 REMOVE AND RECONSTRUCT CONCRETE CURB AND CROSS GUTTER PER HB STD. PLAN 205. (INCLUDES CONCRETE CURB, SPANDRELS, TRANSITIONS, SLOT PAVEMENT, CMB, AND ALL ITEMS NECESSARY TO COMPLETE THE WORK IN PLACE.) | 1,975 SF |
| 11 COLD MILL EXISTING AC PAVEMENT TO A DEPTH OF 0.17" FROM EXISTING SURFACE. | 9,560 SF |
| 12 COLD MILL EXISTING AC PAVEMENT TO A MINIMUM DEPTH OF 0" AND TAPER FROM 0" TO 0.17" PER DETAILS ON SHEET 5. | 74,300 SF |
| 13 CONSTRUCT A 0.17" ASPHALT RUBBER HOT MIX (ARHM-GG-C PG 64-16) WET PROCESS OVERLAY. | 2,275 TONS / 153,000 SF |
| 14 REMOVE EXISTING AC PAVEMENT AND AB TO A DEPTH OF 0.67" AFTER COLD MILL. CONSTRUCT NEW 0.67" B-PG 70-10 AC DEEP LIFT OVER 95% COMPACTED SUBGRADE PRIOR TO PLACING 0.17" ARHM PER PLANS AND DETAIL ON SHEET 5. | 3,090 TONS / 58,525 SF |
| 15 REPLACE WATER VALVE BOX ASSEMBLY AND ADJUST TO GRADE PER HB STD PLAN 612. | 8 EA |
| 16 FURNISH AND INSTALL COMPOSITE SEWER MANHOLE FRAME AND COMPOSITE COVER AND ADJUST TO GRADE PER HB STD. PLAN 513(b). | 5 EA |
| 17 ADJUST NATURAL GAS VALVE COVER TO GRADE BY SO CAL GAS. CONTRACTOR TO COORDINATE WITH SAUL SAENZ AT (213) 231-7273. | 1 EA |
| 18 REMOVE EXISTING, FURNISH AND INSTALL NEW TRAFFIC PULL BOX PER CALTRANS STD. ES-8 & HB STD. PLAN 422 AND ADJUST TO GRADE. PULL BOXES W/FIBERLYTE LID SHALL BE "CHRISTY FIBERLYTE" OR CITY APPROVED EQUAL. SIZE PER PLAN. LOCATION IS TO BE DETERMINED BY ENGINEER. | 5 EA |
| 19 ADJUST EXISTING SURVEY MONUMENT WELL TO FINISHED GRADE. PROTECT EXISTING SURVEY MONUMENT IN PLACE | 2 EA |
| 20 REMOVE EXISTING, FURNISH AND INSTALL NEW WATER METER BOX PER HB STD. PLAN 601/603 AND GRADE. PULL BOXES W/ FIBERLYTE LID SHALL BE "CHRISTY FIBERLYTE" OR CITY APPROVED EQUAL. | 1 EA |

NOTICE TO THE CONTRACTOR

CONTRACTOR AGREES TO ASSUME SOLE AND COMPLETE RESPONSIBILITY FOR JOB SITE CONDITIONS DURING THE COURSE OF CONSTRUCTION OF THIS PROJECT, INCLUDING SAFETY OF ALL PERSONS AND PROPERTY; THAT THIS REQUIREMENT SHALL APPLY CONTINUOUSLY AND NOT BE LIMITED TO NORMAL WORKING HOURS; AND THAT THE CONTRACTOR SHALL DEFEND, INDEMNIFY AND HOLD THE OWNER AND THE ENGINEER HARMLESS FROM ANY AND ALL LIABILITY, REAL OR ALLEGED, IN CONNECTION WITH THE PERFORMANCE OF WORK ON THIS PROJECT, EXCEPTING FOR LIABILITY ARISING FROM THE SOLE NEGLIGENCE OF THE OWNER OR THE ENGINEER.

SHEET INDEX	
SHEET NO.	DESCRIPTION
1	TITLE SHEET
2-5	STREET IMPROVEMENT PLAN



CITY ENGINEER:

Thomas M. Webb, P.E.
R.C.E. NO.: C53300 EXP. DATE: 06/30/23

DRAWN BY: EC 9/28/2022
DESIGNED BY: EC 9/28/2022
CHECKED BY: JF 9/28/2022

PREPARED UNDER THE SUPERVISION OF:

Joseph Fuentes, P.E.
R.C.E. NO.: C76324 EXP. DATE: 09/30/24

APPROVED BY:

Chris Tania, PRINCIPAL P.E.
R.C.E. NO.: C82756 EXP. DATE: 09/30/24



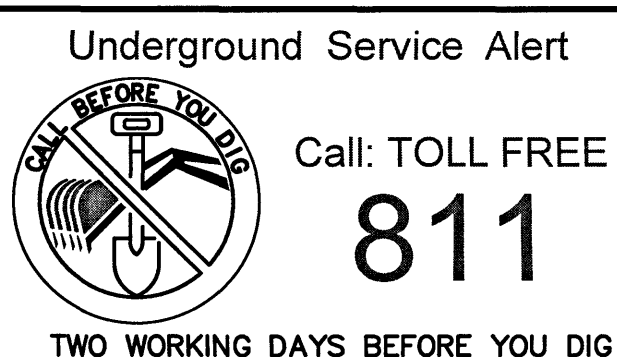
CITY OF HUNTINGTON BEACH
DEPARTMENT OF PUBLIC WORKS

TITLE SHEET
SAYBROOK LN.
FROM HEIL AVE. TO EDINGER AVE.
STA. 12+45 TO 36+71

ARTERIAL REHABILITATION

C.C. No. 1690

SHEET NO.
1
OF
5



REVISIONS				
REV.	DATE	BY	DESCRIPTION	APP'VD

REFERENCES

CONSTRUCTION NOTES:

- 1 PROTECT IN PLACE
- 2 REMOVE TREE AND ROOTS; GRIND TREE STUMP AND ROOTS TO 24" BELOW TOP OF SIDEWALK/GRADE. PULL OUT ALL ROOTS WITHIN PROPOSED IMPROVEMENTS.
- 4 FURNISH AND PLANT NEW 24" BOX TREE, KING PALM - ARCHONTOPHOENIX ALEXANDRAE, PER HB STD. PLANS 714, 715, 716, 718 & 719 AS SHOWN ON PLANS. (ITEM INCLUDES EXISTING LANDSCAPE AND IRRIGATION REMOVAL TO ACCOMMODATE NEW TREE; REPLACEMENT OF IRRIGATION IN KIND; BACKFILLING WITH CLASS A TOP SOIL AND INSTALLATION OF ARBOR-GARD OR APPROVED EQUAL AT BASE OF NEW TREE)
- 5 SAWCUT AND REMOVE EXISTING SIDEWALK AND CONSTRUCT TREE WELL WITH SIDEWALK PER DETAIL ON SHEET 5. (ITEM INCLUDES REMOVAL OF SIDEWALK, 82 SF OF NEW SIDEWALK, NON-CHEMICAL WEED CONTROL BARRIER TO BE DUPONT LANDSCAPE MAX OR APPROVED EQUAL AND MULCH.)
- 6 REMOVE AND RECONSTRUCT SIDEWALK PER HB STD PLAN 207.
- 7 REMOVE AND RECONSTRUCT CURB AND GUTTER PER HB STD. PLAN 202 (CF= 8"). (ITEM INCLUDES CMB, SLOT PAVEMENT AND LOT DRAIN.)
- 9 REMOVE AND RECONSTRUCT CURB ACCESS RAMP, DEPRESSED CURB, AND GUTTER PER CALTRANS STD PLAN RSP AB8A FROM BCR TO ECR. (CASE SHOWN ON PLAN). (INCLUDES ALL APPURTENANCES, CURB GUTTER, DEPRESSED CURB, SIDEWALK, DOMES, RETAINING CURB, CMB, SLOT PAVEMENT, AND ALL ITEMS FROM ECR TO BCR NECESSARY TO COMPLETE THE WORK IN PLACE.)
- 10 REMOVE AND RECONSTRUCT CONCRETE CURB AND CROSS GUTTER PER HB STD. PLAN 205. (INCLUDES CONCRETE CURB, SPANDRELS, TRANSITIONS, SLOT PAVEMENT, CMB, AND ALL ITEMS NECESSARY TO COMPLETE THE WORK IN PLACE.)
- 12 COLD MILL EXISTING AC PAVEMENT TO A MINIMUM DEPTH OF 0' AND TAPER FROM 0' TO 0.17' PER DETAIL ON SHEET 5.
- 13 CONSTRUCT A 0.17' ASPHALT RUBBER HOT MIX (ARHM-GC-C PG 64-16) WET PROCESS OVERLAY.
- 14 REMOVE EXISTING AC PAVEMENT AND AB TO A DEPTH OF 0.67' AFTER COLD MILL. CONSTRUCT NEW 0.67' B-PG 70-10 AC DEEP LIFT OVER 95% COMPACTED SUBGRADE PRIOR TO PLACING 0.17' ARHM PER PLANS AND DETAIL ON SHEET 5.
- 15 REPLACE WATER VALVE BOX ASSEMBLY AND ADJUST TO GRADE PER HB STD PLAN 612.
- 16 FURNISH AND INSTALL COMPOSITE SEWER MANHOLE FRAME AND COMPOSITE COVER AND ADJUST TO GRADE PER HB STD. PLAN 513(b).

LEGEND

- CONCRETE R/R
DEEP LIFT
OVERLAY
TREE
(XX.XX)AC = EXISTING ELEVATION
XX.XX AC = PROPOSED ELEVATION

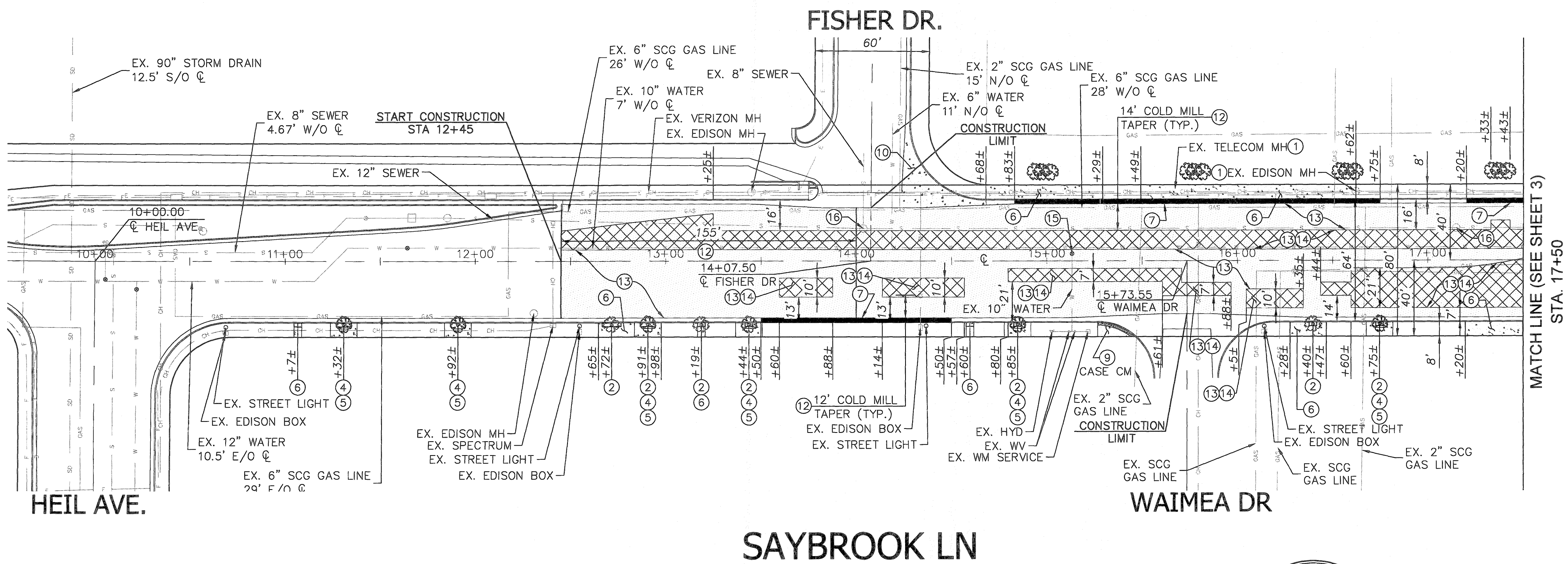
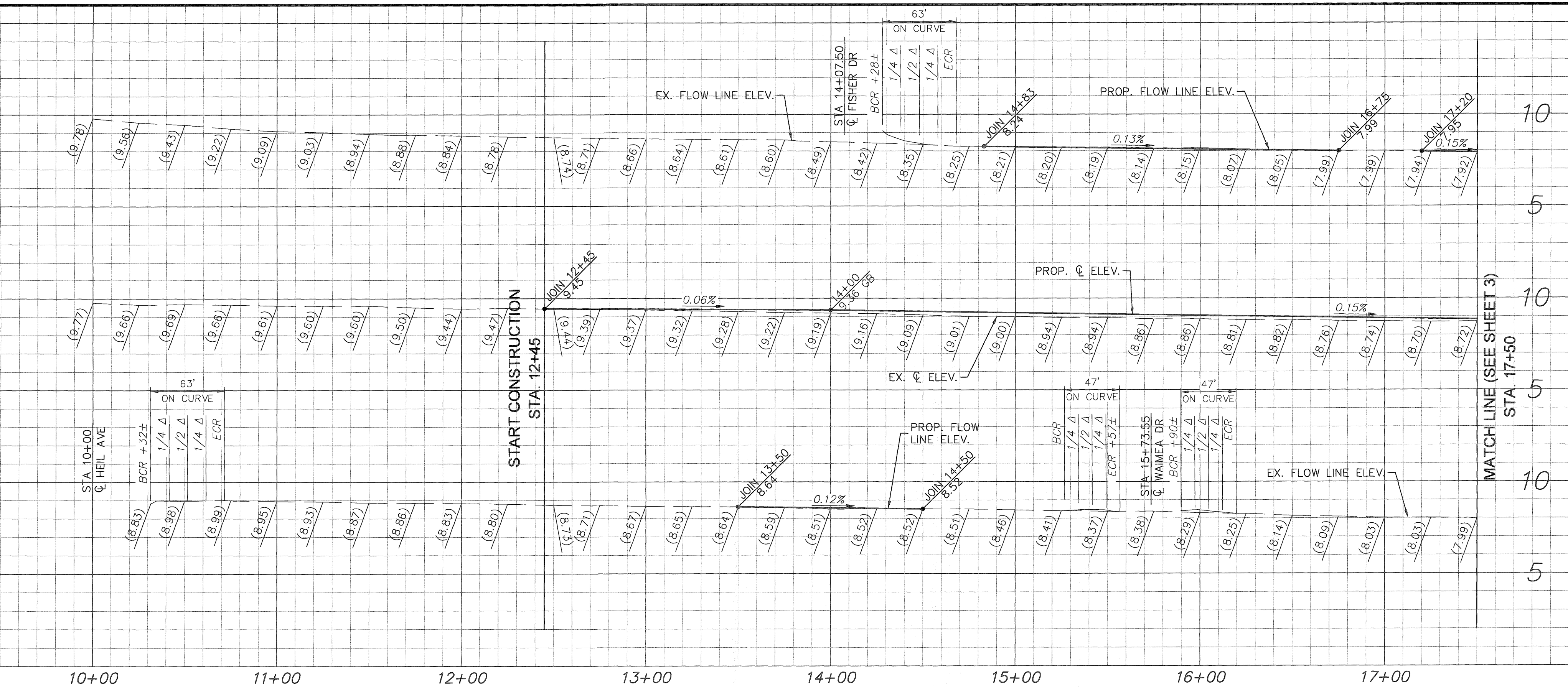
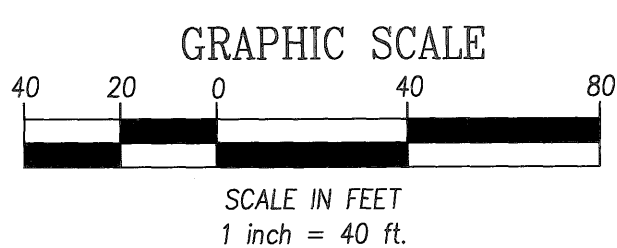
ABBREVIATIONS

- HP = HIGH POINT
HYD = FIRE HYDRANT
CB = CATCH BASIN
EX. = EXISTING
TX = TOP OF X
BCR = BEGIN CURB RETURN
ECR = END CURB RETURN
LP = LIGHT POLE
WM = WATER METER
WV = WATER VALVE
SD = STORM DRAIN
SCG = SOUTHERN CALIFORNIA GAS
SCE = SOUTHERN CALIFORNIA EDISON
- FL = FLOW LINE
CL = CENTER LINE
(TYP.) = TYPICAL
W/O = WEST OF
E/O = EAST OF
N/O = NORTH OF
S/O = SOUTH OF
R = RADIUS
STA = STATION

SYMBOL

- EXISTING CABLECOM LINE
EXISTING CHARTER LINE
EXISTING FRONTIER LINE
EXISTING SCE LINE
EXISTING SEWER LINE
EXISTING STORM DRAIN LINE
EXISTING WATER LINE
EXISTING GAS LINE

DESCRIPTION



Underground Service Alert



Call: TOLL FREE

811

TWO WORKING DAYS BEFORE YOU DIG

REVISIONS

REV.	DATE	BY	DESCRIPTION	APP'D

REFERENCES

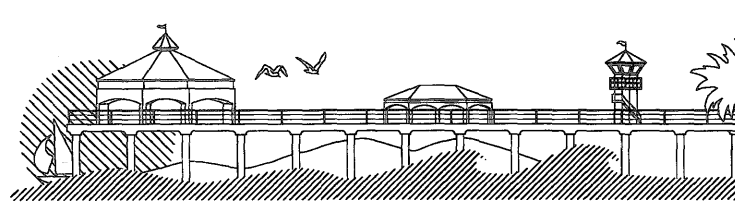
DRAWN BY:	EC	9/28/2022
DESIGNED BY:	EC	9/28/2022
CHECKED BY:	JF	9/28/2022

PREPARED UNDER THE SUPERVISION OF:

Joseph Fuentes, P.E.
R.C.E. NO.: C70324
DATE: 9/30/24
EXP. DATE: 09/30/24

APPROVED BY:

Chris Tanio, P.E.
R.C.E. NO.: CB2756
DATE: 9/30/24
EXP. DATE: 09/30/24



CITY OF HUNTINGTON BEACH
DEPARTMENT OF PUBLIC WORKS

STREET IMPROVEMENT PLAN
SAYBROOK LN.
FROM HEIL AVE. TO EDINGER AVE.
STA 12+45 TO 17+50

SHEET NO.

2

OF


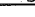


5

11/13/24-202



3. PROTECT IN PLACE.
2. REMOVE TREE AND ROOTS; GRIND TREE STUMP AND ROOTS TO 24" BELOW TOP OF SIDEWALK/GRADE. REMOVE ALL ROOTS WITHIN PROPOSED IMPROVEMENTS.
4. FURNISH AND PLANT NEW 24" BOX TREE, KING PALM – ARCHONTOPHOENIX ALEXANDRAE, PER HB STD. PLANS 714, 715, 716, 718 & 719 AS SHOWN ON PLANS. (ITEM INCLUDES EXISTING LANDSCAPE AND IRRIGATION REMOVAL TO ACCOMMODATE NEW TREE; REPLACEMENT OF IRRIGATION IN KIND; BACKFILLING WITH CLASS A TOP SOIL AND INSTALLATION OF ARBOR-GARD OR APPROVED EQUAL AT BASE OF NEW TREE)
5. SAWCUT AND REMOVE EXISTING SIDEWALK AND CONSTRUCT TREE WELL WITH SIDEWALK PER DETAIL ON SHEET 5. (ITEM INCLUDES REMOVAL OF SIDEWALK, 82 SF OF NEW SIDEWALK, NON-CHEMICAL WEED CONTROL BARRIER TO BE DUPONT LANDSCAPE MAX OR APPROVED EQUAL AND MULCH.)
6. REMOVE AND RECONSTRUCT SIDEWALK PER HB STD PLAN 207.
7. REMOVE AND RECONSTRUCT CURB AND GUTTER PER HB STD. PLAN 202 (CF= 8"). (ITEM INCLUDES CMB, SLOT PAVEMENT AND LOT DRAIN.)
8. REMOVE AND RECONSTRUCT DRIVEWAY CURB & GUTTER PER HB STD. PLAN 209 AND DETAIL ON SHEET 5. (ITEM INCLUDES CMB, SLOT PAVEMENT, AND LOT DRAIN.)
9. REMOVE AND RECONSTRUCT CURB ACCESS RAMP, DEPRESSED CURB, AND GUTTER PER CALTRANS STD PLAN RSP AB84 FROM BCR TO ECR. (CASE SHOWN ON PLAN). (INCLUDES ALL APPURTENANCES, CURB, DEPRESSED CURB, SIDEWALK, DOMES, RETAINING CURB, CMB, SLOT PAVEMENT, AND ALL ITEMS FROM ECR TO BCR NECESSARY TO COMPLETE THE WORK IN PLACE.)
11. COLD MILL EXISTING AC PAVEMENT TO A DEPTH OF 0.17" FROM EXISTING SURFACE.
12. COLD MILL EXISTING AC PAVEMENT TO A MINIMUM DEPTH OF 0' AND TAPER FROM 0' TO 0.17" PER DETAIL ON SHEET 5.
13. CONSTRUCT A 0.17" ASPHALT RUBBER HOT MIX (ARHM--GG-C PG 64-16) WET PROCESS OVERLAY.
14. REMOVE EXISTING AC PAVEMENT AND AB TO A DEPTH OF 0.67" AFTER COLD MILL. CONSTRUCT NEW 0.67" B-PG 70-10 AC DEEP LIFT OVER 95% COMPACTED SUBGRADE PRIOR TO PLACING 0.17" ARHM PER PLANS AND DETAIL ON SHEET 5.
15. REPLACE WATER VALVE BOX ASSEMBLY AND ADJUST TO GRADE PER HB STD PLAN 612.
16. FURNISH AND INSTALL COMPOSITE SEWER MANHOLE FRAME AND COMPOSITE COVER AND ADJUST TO GRADE PER HB STD.PLAN 513(b).
17. ADJUST NATURAL GAS VALVE COVER TO GRADE BY SO CAL GAS. CONTRACTOR TO COORDINATE WITH ISAAC PUENTE AT (714) 634-7222.
19. ADJUST EXISTING SURVEY MONUMENT WELL TO FINISHED GRADE. PROTECT EXISTING SURVEY MONUMENT IN PLACE



 CONCRETE R/R
 DEEP LIFT
 OVERLAY
 TREE
 .XX)AC = EXISTING ELEVATION
 .XX AC = PROPOSED ELEVATION

ABBREVIATIONS


HP = HIGH POINT	FL = FLOW LINE
HYD = FIRE HYDRANT	CL = CENTER LINE
CB = CATCH BASIN	(TYP.) = TYPICAL
EX. = EXISTING	W/O = WEST OF
TX = EAST OF X	E/O = EAST OF
BCR = BEGIN CURB RETURN	N/O = NORTH OF
ECR = END CURB RETURN	S/O = SOUTH OF
LP = LIGHT POLE	R = RADIUS
WM = WATER METER	STA = STATION
WV = WATER VALVE	
SD = STORM DRAIN	
SCG = SOUTHERN CALIFORNIA GAS	
SCE = SOUTHERN CALIFORNIA Edison	

SYMBOL

Figure 1 is a schematic representation of the experimental design. It shows a sequence of events for two groups: OC (Occlusal Control) and CH (Occlusal Hand). The sequence includes: OC and CH, F (Finger), E (Eye), S (Shoulder), SC (Shoulder Control), W (Wrist), and DAS (Dental Assessment).



DESCRIPTION

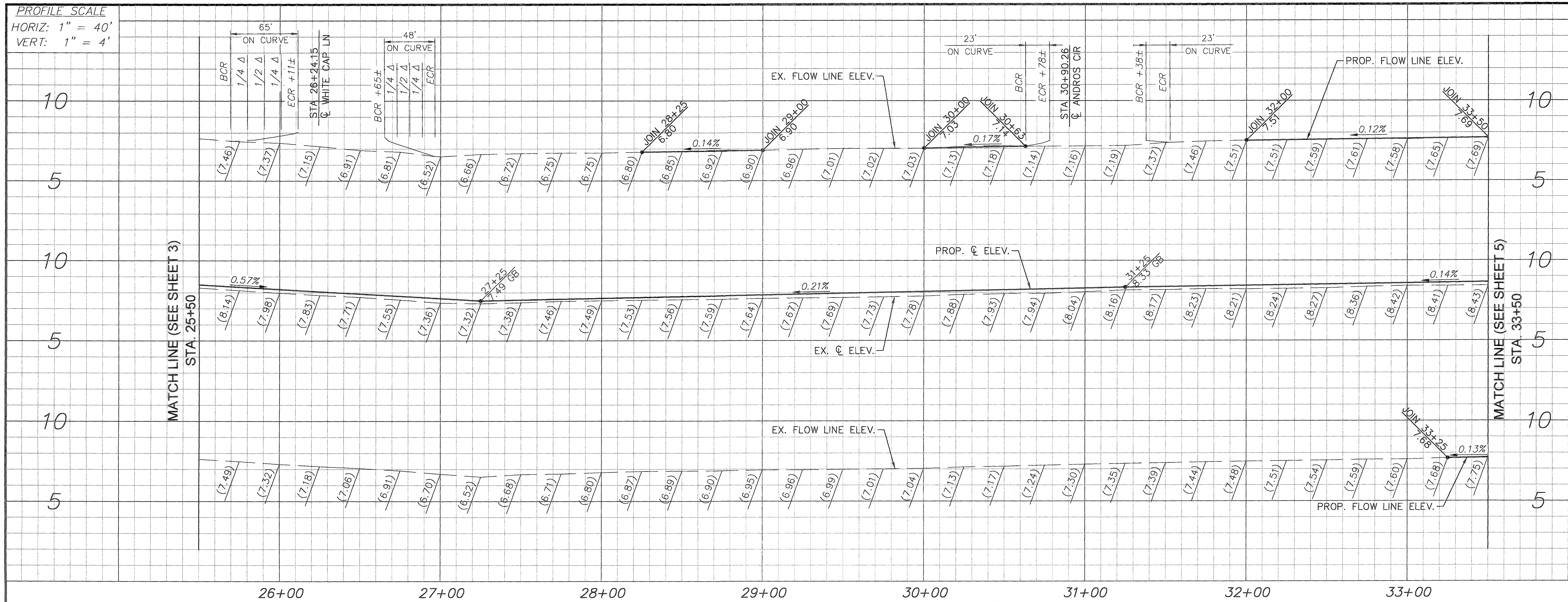
GRAPHIC SCALE



SCALE IN FEET
1 inch = 40 ft.

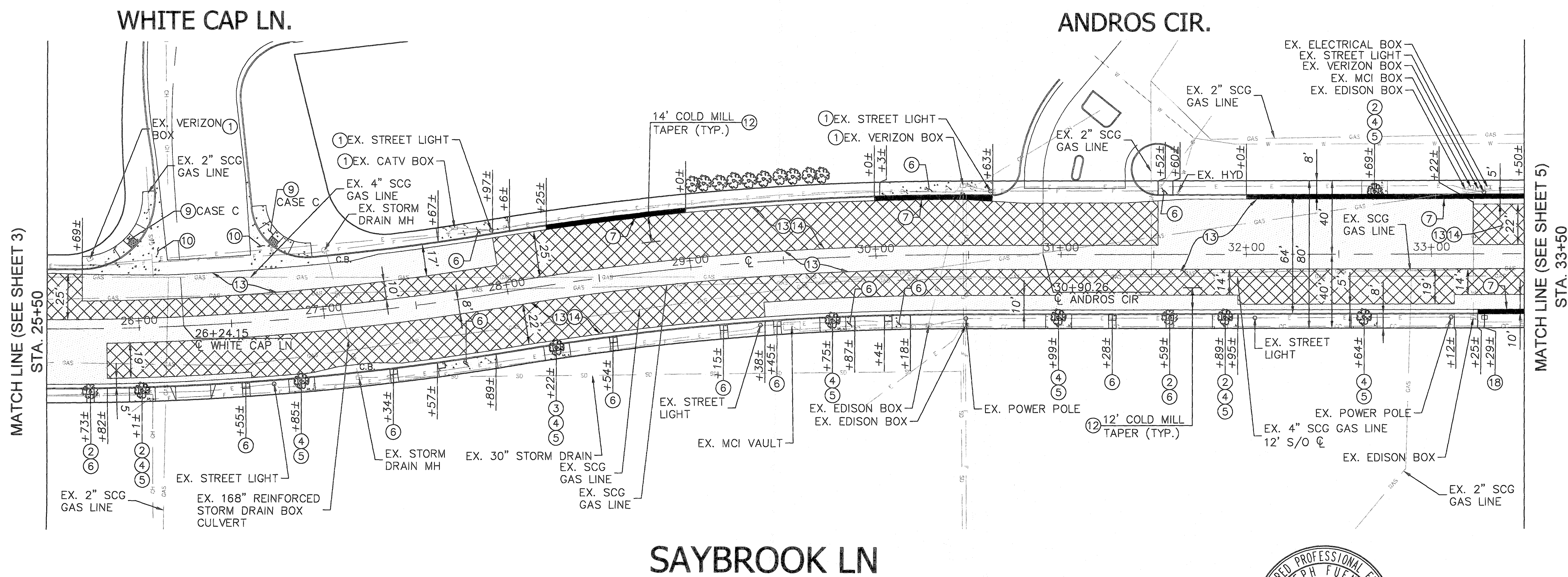


<div><div><div>CALL BEFORE YOU DIG</div><div></div></div><div>Underground Service Alert</div><div>Call: TOLL FREE 811</div><div>TWO WORKING DAYS BEFORE YOU DIG</div></div>	REVISIONS					REFERENCES			PREPARED UNDER THE SUPERVISION OF: <div><div><div>Joseph Fuentetaja 9/28/22</div><div>Joseph Fuentetaja, P.E. DATE</div><div>R.C.E. NO.: C70324 EXP. DATE: 09/30/24</div></div></div> <div>APPROVED BY: <div><div><div>Chris Tanio 9/28/22</div><div>Chris Tanio, P.E. DATE</div><div>R.C.E. NO.: C82756 EXP. DATE: 09/30/24</div></div></div></div>		<div><div><div></div><div>CITY OF HUNTINGTON BEACH</div><div>DEPARTMENT OF PUBLIC WORKS</div></div></div>	<div>STREET IMPROVEMENT PLAN SAYBROOK LN. FROM HEIL AVE. TO EDINGER AVE. STA 17+50 TO 25+50</div>	<div>SHEET NO. 3 OF 5</div>
	REV.	DATE	BY	DESCRIPTION	APP'V'D								



CONSTRUCTION NOTES:

- 1 PROTECT IN PLACE
- 2 REMOVE TREE AND ROOTS; GRIND TREE STUMP AND ROOTS TO 24" BELOW TOP OF SIDEWALK/GRADE. PULL OUT ALL ROOTS WITHIN PROPOSED IMPROVEMENTS.
- 3 REMOVE STUMP AND ROOTS (NO TREE, ONLY STUMP AT THIS LOCATION); GRIND TREE STUMP AND ROOTS TO 24" BELOW TOP OF SIDEWALK/GRADE. PULL OUT ALL ROOTS WITHIN PROPOSED IMPROVEMENTS.
- 4 FURNISH AND PLANT NEW 24" BOX TREE, KING PALM - ARCHONTOPHOENIX ALEXANDRAE, PER HB STD. PLANS 714, 715, 716, 718 & 719 AS SHOWN ON PLANS. (ITEM INCLUDES EXISTING LANDSCAPE AND IRRIGATION REMOVAL TO ACCOMMODATE NEW TREE; REPLACEMENT OF IRRIGATION IN KIND; BACKFILLING WITH CLASS A TOP SOIL AND INSTALLATION OF ARBOR-GARD OR APPROVED EQUAL AT BASE OF NEW TREE)
- 5 SAWCUT AND REMOVE EXISTING SIDEWALK AND CONSTRUCT TREE WELL WITH SIDEWALK PER DETAIL ON SHEET 5. (ITEM INCLUDES REMOVAL OF SIDEWALK, 82 SF OF NEW SIDEWALK, NON-CHEMICAL WEED CONTROL BARRIER TO BE DUPONT LANDSCAPE MAX OR APPROVED EQUAL AND MULCH.)
- 6 REMOVE AND RECONSTRUCT SIDEWALK PER HB STD PLAN 207.
- 7 REMOVE AND RECONSTRUCT CURB AND GUTTER PER HB STD. PLAN 202 (CF= 8"). (ITEM INCLUDES CMB, SLOT PAVEMENT AND LOT DRAIN.)
- 9 REMOVE AND RECONSTRUCT CURB ACCESS RAMP, DEPRESSED CURB, AND GUTTER PER CALTRANS STD PLAN RSP AB8A FROM BCR TO ECR. (CASE SHOWN ON PLAN). (INCLUDES ALL APPURTENANCES, CURB GUTTER, DEPRESSED CURB, SIDEWALK, DOMES, RETAINING CURB, CMB, SLOT PAVEMENT, AND ALL ITEMS FROM ECR TO BCR NECESSARY TO COMPLETE THE WORK IN PLACE.)
- 10 REMOVE AND RECONSTRUCT CONCRETE CURB AND CROSS GUTTER PER HB STD. PLAN 205. (INCLUDES CONCRETE CURB, SPANDRELS, TRANSITIONS, SLOT PAVEMENT, CMB, AND ALL ITEMS NECESSARY TO COMPLETE THE WORK IN PLACE.)
- 12 COLD MILL EXISTING AC PAVEMENT TO A MINIMUM DEPTH OF 0' AND TAPER FROM 0' TO 0.17' PER DETAIL ON SHEET 5.
- 13 CONSTRUCT A 0.17' ASPHALT RUBBER HOT MIX (ARHM-GG-C PG 64-16) WET PROCESS OVERLAY.
- 14 REMOVE EXISTING AC PAVEMENT AND AB TO A DEPTH OF 0.67' AFTER COLD MILL. CONSTRUCT NEW 0.67' B-PG 70-10 AC DEEP LIFT OVER 95% COMPACTED SUBGRADE PRIOR TO PLACING 0.17' ARHM PER PLANS AND DETAIL ON SHEET 5.
- 18 REMOVE EXISTING, FURNISH AND INSTALL NEW TRAFFIC PULL BOX PER CALTRANS STD. ES-8 & HB STD. PLAN 422 AND ADJUST TO GRADE. PULL BOXES W/FIBERLYTE LID SHALL BE "CHRISTY FIBERLYTE" OR CITY APPROVED EQUAL. SIZE PER PLAN. LOCATION IS TO BE DETERMINED BY ENGINEER.



LEGEND

- CONCRETE R/R
- DEEP LIFT
- OVERLAY
- TREE
- (XX.XX)AC = EXISTING ELEVATION
- XX.XX AC = PROPOSED ELEVATION

ABBREVIATIONS

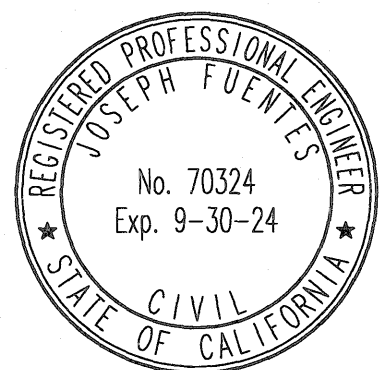
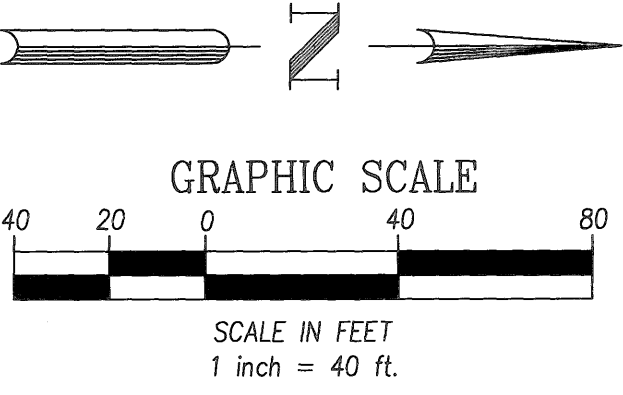
- HP = HIGH POINT
- HYD = FIRE HYDRANT
- CB = CATCH BASIN
- EX. = EXISTING
- TX = TOP OF X
- BCR = BEGIN CURB RETURN
- ECR = END CURB RETURN
- LP = LIGHT POLE
- WM = WATER METER
- WV = WATER VALVE
- SD = STORM DRAIN
- SCG = SOUTHERN CALIFORNIA GAS
- SCE = SOUTHERN CALIFORNIA EDISON
- FL = FLOW LINE
- CL = CENTER LINE
- (TYP.) = TYPICAL
- W/O = WEST OF
- E/O = EAST OF
- N/O = NORTH OF
- S/O = SOUTH OF
- R = RADIUS
- STA = STATION

SYMBOL

- EXISTING CABLECOM LINE
- EXISTING CHARTER LINE
- EXISTING FRONTIER LINE
- EXISTING SCE LINE
- EXISTING SEWER LINE
- EXISTING STORM DRAIN LINE
- EXISTING WATER LINE
- EXISTING GAS LINE

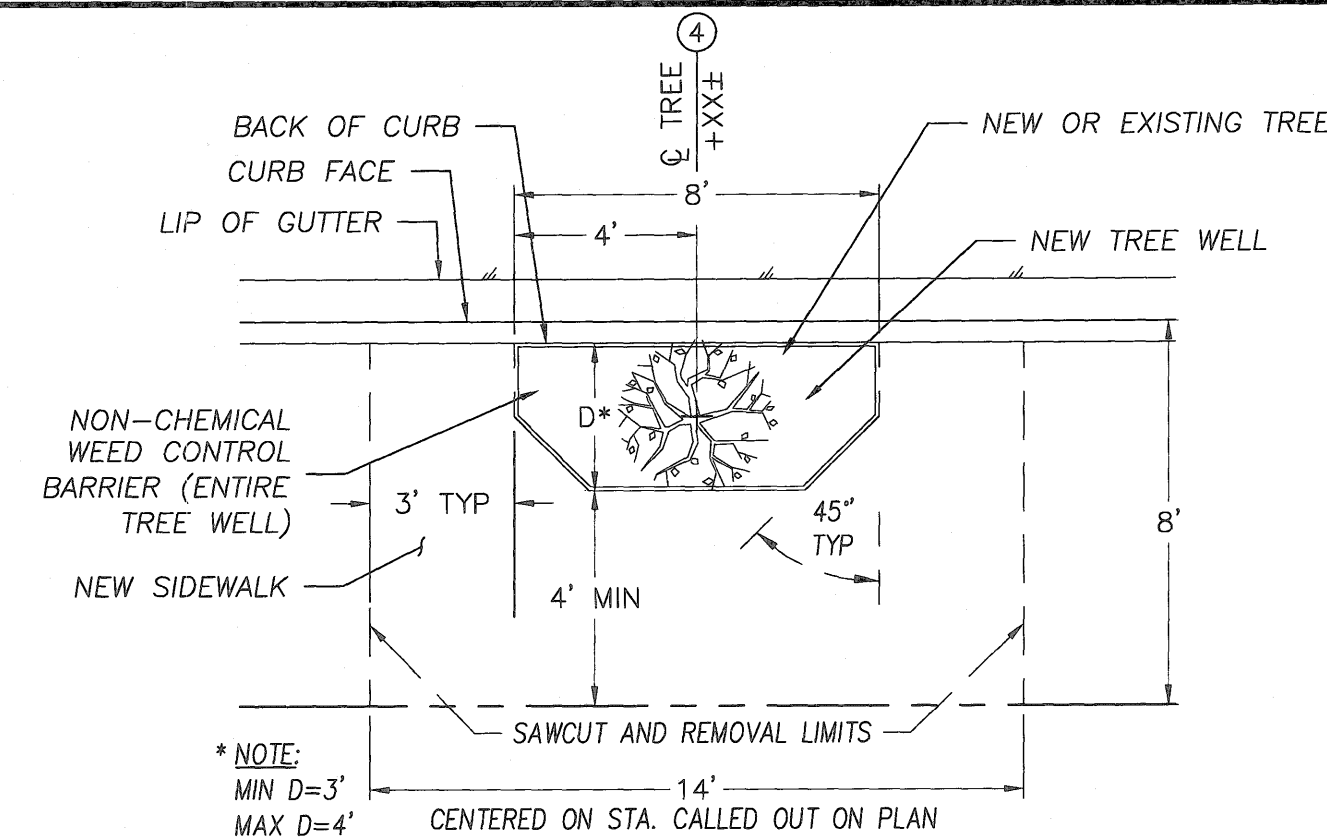
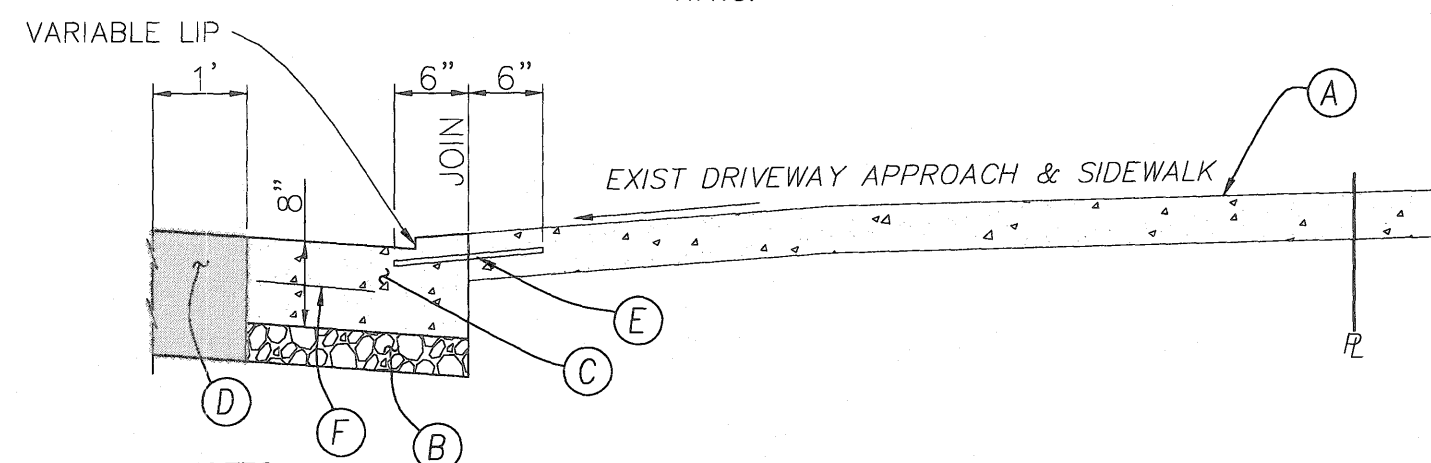
DESCRIPTION

- EXISTING CABLECOM LINE
- EXISTING CHARTER LINE
- EXISTING FRONTIER LINE
- EXISTING SCE LINE
- EXISTING SEWER LINE
- EXISTING STORM DRAIN LINE
- EXISTING WATER LINE
- EXISTING GAS LINE



CONSTRUCTION NOTES:

- PROTECT IN PLACE
- REMOVE TREE AND ROOTS; GRIND TREE STUMP AND ROOTS TO 24" BELOW TOP OF SIDEWALK/GRADE. PULL OUT ALL ROOTS WITHIN PROPOSED IMPROVEMENTS.
- REMOVE STUMP AND ROOTS (NO TREE, ONLY STUMP AT THIS LOCATION); GRIND TREE STUMP AND ROOTS TO 24" BELOW TOP OF SIDEWALK/GRADE. PULL OUT ALL ROOTS WITHIN PROPOSED IMPROVEMENTS.
- FURNISH AND PLANT NEW 24" BOX TREE, KING PALM - ARCHONTOPHOENIX ALEXANDRAE, PER HB STD. PLANS 714, 715, 716, 718 & 719 AS SHOWN ON PLANS. (ITEM INCLUDES EXISTING LANDSCAPE AND IRRIGATION REMOVAL TO ACCOMMODATE NEW TREE; REPLACEMENT OF IRRIGATION IN KIND; BACKFILLING WITH CLASS A TOP SOIL AND INSTALLATION OF ARBOR-CARD OR APPROVED EQUAL AT BASE OF NEW TREE)
- SAWCUT AND REMOVE EXISTING SIDEWALK AND CONSTRUCT TREE WELL WITH SIDEWALK PER DETAIL ON SHEET 5. (ITEM INCLUDES REMOVAL OF SIDEWALK, 82 SF OF NEW SIDEWALK, NON-CHEMICAL WEED CONTROL BARRIER TO BE DUPONT LANDSCAPE MAX OR APPROVED EQUAL AND MULCH.)
- REMOVE AND RECONSTRUCT SIDEWALK PER HB STD PLAN 207.
- REMOVE AND RECONSTRUCT CURB AND GUTTER PER HB STD. PLAN 202 (CF= 8"). (ITEM INCLUDES CMB, SLOT PAVEMENT AND LOT DRAIN.)
- REMOVE AND RECONSTRUCT DRIVEWAY CURB & GUTTER PER HB STD. PLAN 209 AND DETAIL ON SHEET 5. (ITEM INCLUDES CMB, SLOT PAVEMENT, AND LOT DRAIN.)
- REMOVE AND RECONSTRUCT CURB ACCESS RAMP, DEPRESSED CURB, AND GUTTER PER CALTRANS STD PLAN RSP ABBA FROM BCR TO ECR. (CASE SHOWN ON PLAN). (INCLUDES ALL APPURTENANCES, CURB GUTTER, DEPRESSED CURB, SIDEWALK, DOMES, RETAINING CURB, CMB, SLOT PAVEMENT, AND ALL ITEMS FROM ECR TO BCR NECESSARY TO COMPLETE THE WORK IN PLACE.)
- COLD MILL EXISTING AC PAVEMENT TO A DEPTH OF 0.17' FROM EXISTING SURFACE.
- COLD MILL EXISTING AC PAVEMENT TO A MINIMUM DEPTH OF 0' AND TAPER FROM 0' TO 0.17' PER DETAIL ON SHEET 5.
- CONSTRUCT A 0.17' ASPHALT RUBBER HOT MIX (ARHM-GG-C PG 64-16) WET PROCESS OVERLAY.
- REMOVE EXISTING AC PAVEMENT AND AB TO A DEPTH OF 0.67' AFTER COLD MILL. CONSTRUCT NEW 0.67' B-PG 70-10 AC DEEP LIFT OVER 95% COMPACTED SUBGRADE PRIOR TO PLACING 0.17' ARHM PER PLANS AND DETAIL ON SHEET 5.
- REPLACE WATER VALVE BOX ASSEMBLY AND ADJUST TO GRADE PER HB STD PLAN 612.
- REMOVE EXISTING, FURNISH AND INSTALL NEW TRAFFIC PULL BOX PER CALTRANS STD. ES-8 & HB STD. PLAN 422 AND ADJUST TO GRADE. PULL BOXES W/FIBERLYTE LID SHALL BE "CHRISTY FIBERLYTE" OR CITY APPROVED EQUAL. SIZE PER PLAN. LOCATION IS TO BE DETERMINED BY ENGINEER.
- REMOVE EXISTING, FURNISH AND INSTALL NEW WATER METER BOX PER HB STD. PLAN 601/603 AND GRADE. PULL BOXES W/ FIBERLYTE LID SHALL BE "CHRISTY FIBERLYTE" OR CITY APPROVED EQUAL. SIZE PER PLAN.

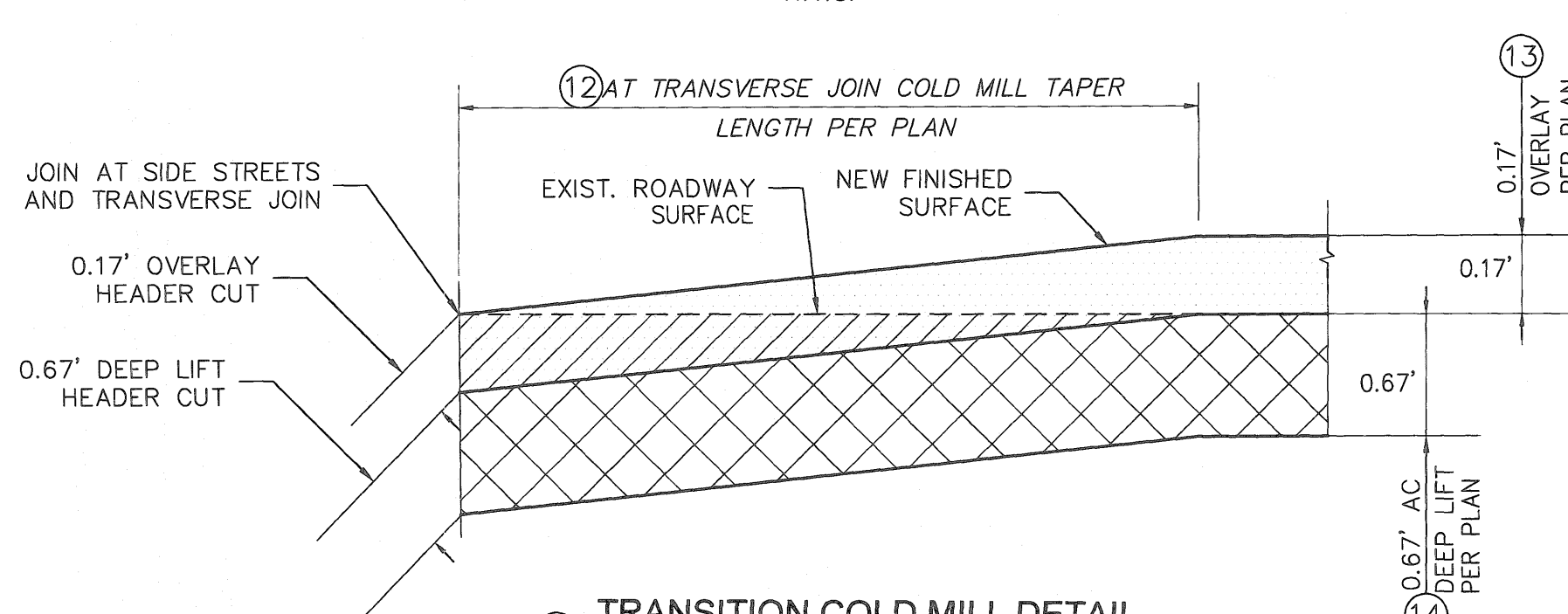
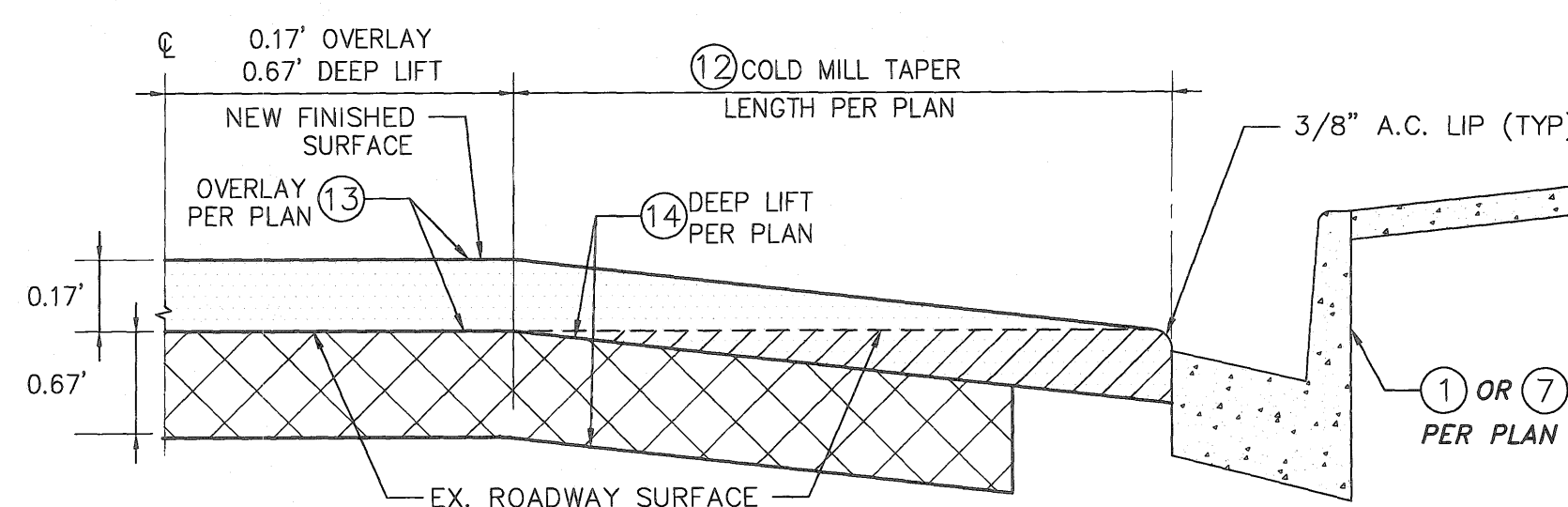
5 TREE WELL AND SIDEWALK DETAIL
N.T.S.

NOTES:

- PROTECT IN PLACE EXISTING DRIVEWAY.
- INSTALL C.M.B. (6" MIN.) AS REQ'D PER STD. PLAN 202. WITH 95% COMPACTION.
- REMOVE AND REPLACE DRIVEWAY CURB AND GUTTER.
- PROVIDE ASPHALT CONCRETE SLOT PAVE.
- CORE DRILL HOLES, PLACE ANCHORING CEMENT, AND PLACE #4 EPOXY-COATED DOWELS AT 18" O.C.
- 8" CONCRETE WITH 6"x6" NO. 6 WELDED WIRE FABRIC OR FIBER MESH PER STD 211.

GENERAL NOTES:

- 22" MIN. OF FULL HEIGHT CURB IS REQUIRED BETWEEN DRIVEWAYS SERVING THE SAME PARCEL, UNLESS OTHERWISE APPROVED BY THE CITY ENGINEER.
- CONCRETE SHALL BE CLASS 520-C-2500.

8 DRIVEWAY CURB SECTION
N.T.S.12 TRANSITION COLD MILL DETAIL
AT TRANSVERSE JOIN
N.T.S.12/14 EDGE COLD MILL AND DEEP LIFT DETAIL
N.T.S.

LEGEND

	CONCRETE R/R
	DEEP LIFT
	OVERLAY
	TREE
	(XX.XX) AC = EXISTING ELEVATION
	XX.XX AC = PROPOSED ELEVATION

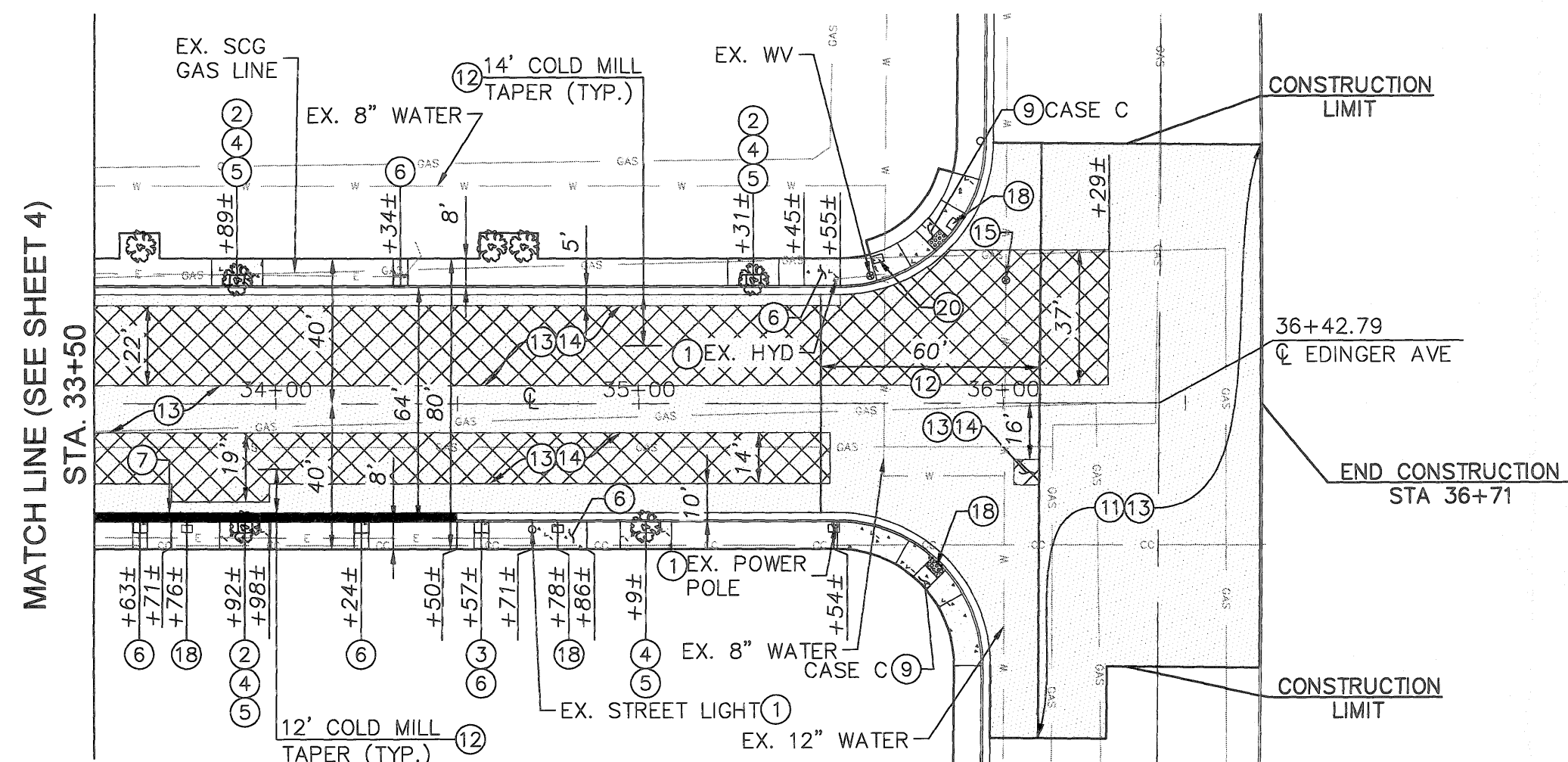
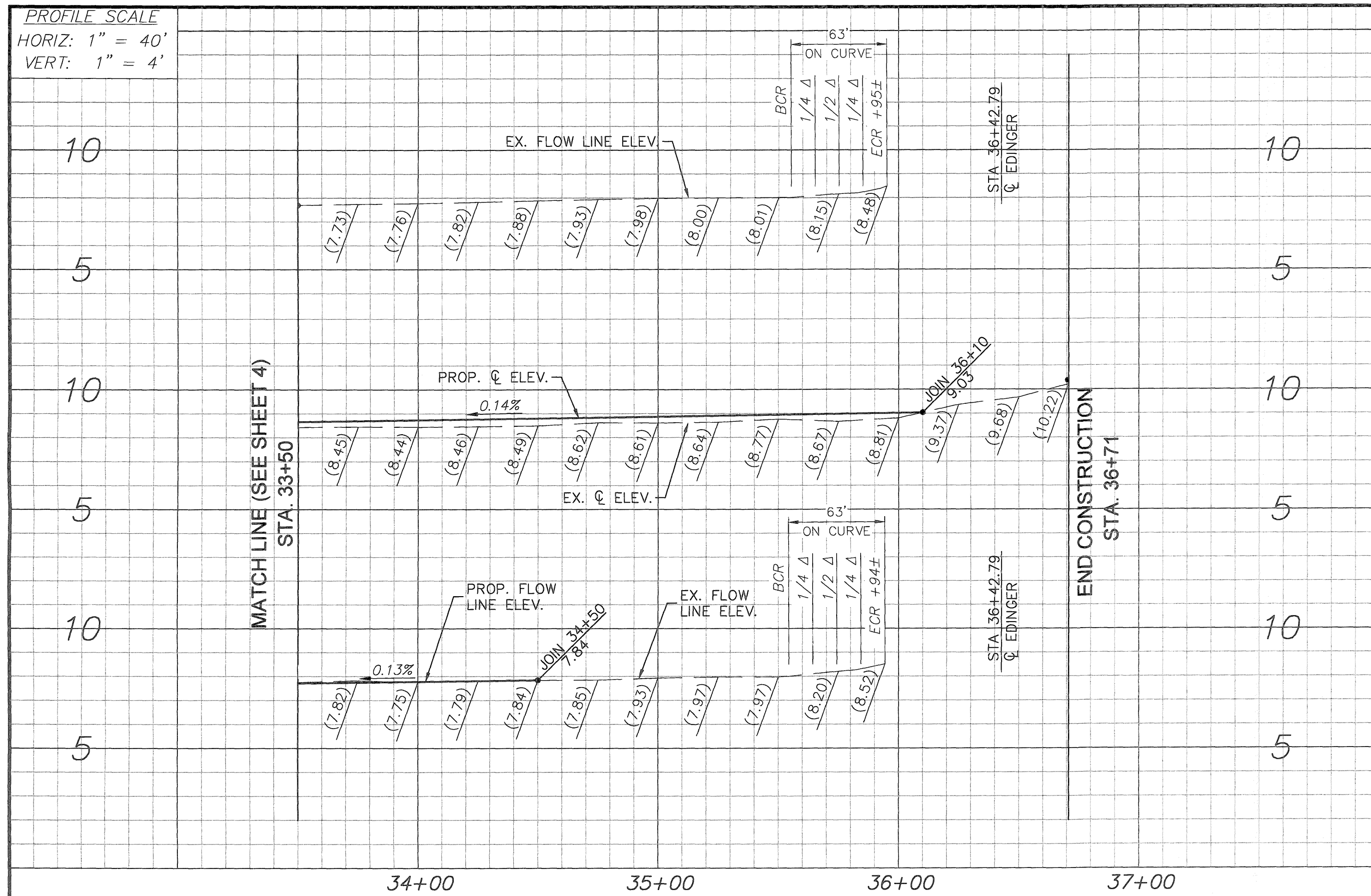
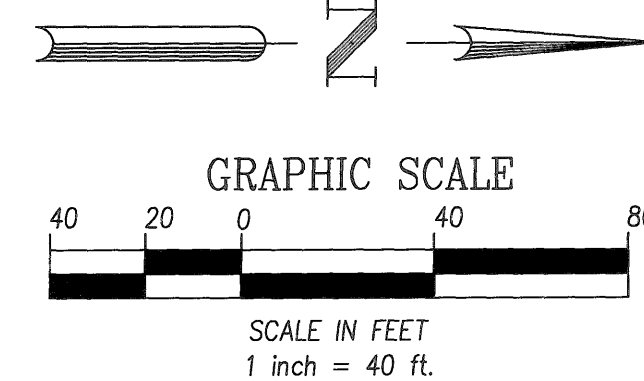
ABBREVIATIONS

HP = HIGH POINT	FL = FLOW LINE
HYD = FIRE HYDRANT	CL = CENTER LINE
CB = CATCH BASIN	(TYP.) = TYPICAL
EX. = EXISTING	W/O = WEST OF
TX = TOP OF X	E/O = EAST OF
BCR = BEGIN CURB RETURN	N/O = NORTH OF
ECR = END CURB RETURN	S/O = SOUTH OF
LP = LIGHT POLE	R = RADIUS
WM = WATER METER	STA = STATION
WV = WATER VALVE	
SD = STORM DRAIN	
SCG = SOUTHERN CALIFORNIA GAS	
SCE = SOUTHERN CALIFORNIA EDISON	

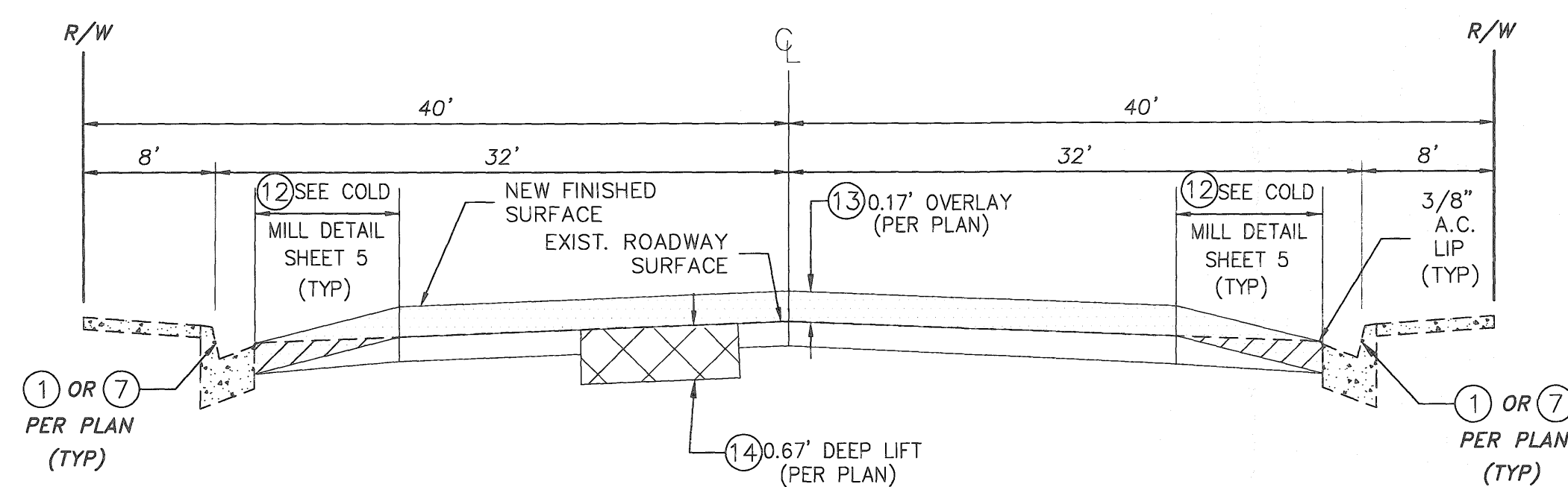
SYMBOL

	EXISTING CABLECOM LINE
	EXISTING CHARTER LINE
	EXISTING FRONTIER LINE
	EXISTING SCE LINE
	EXISTING SEWER LINE
	EXISTING STORM DRAIN LINE
	EXISTING WATER LINE
	EXISTING GAS LINE

DESCRIPTION



SAYBROOK LN

TYPICAL SECTION
N.T.S.

Underground Service Alert



Call: TOLL FREE

811

TWO WORKING DAYS BEFORE YOU DIG

REVISIONS

REV.	DATE	BY	DESCRIPTION	APP'D

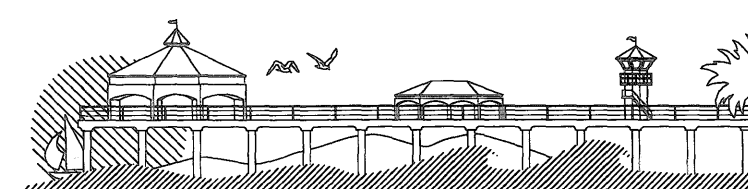
REFERENCES

DRAWN BY:	EC	9/28/2022
DESIGNED BY:	EC	9/28/2022
CHECKED BY:	JF	9/28/2022

PREPARED UNDER THE SUPERVISION OF:

Joseph Fuentes, P.E.
P.C.E. NO.: C70324
EXP. DATE: 09/30/24

APPROVED BY:
Chris Tania, P.E.
R.C.E. NO.: C82756
EXP. DATE: 09/30/24

CITY OF HUNTINGTON BEACH
DEPARTMENT OF PUBLIC WORKS

STREET IMPROVEMENT PLAN
SAYBROOK LN.
FROM HEIL AVE. TO EDINGER AVE.
STA 33+50 TO 36+71

SHEET NO.

5

OF

5

12/14/2022