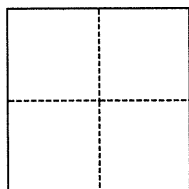


# CORNER RECORD

Agency Index BK 131 PG 8  
Document Number CR 14102

City of Oakland County of Alameda, California  
Brief Legal Description Monument at Jefferson Street & 14th Street

## CORNER TYPE



☐ Government Corner ☒ Control  
☐ Meander ☐ Property  
☐ Rancho ☐ Other

Date of Survey November 7, 2019

## COORDINATES (Optional)

N. \_\_\_\_\_ E. \_\_\_\_\_  
Elevation \_\_\_\_\_  
Units ☐ Metric ☐ U.S. Survey Foot  
Horizontal Datum \_\_\_\_\_  
Zone \_\_\_\_\_ Epoch Date \_\_\_\_\_  
Vertical Datum \_\_\_\_\_  
☐ Complies with Public Resources Code §§8801-8819  
☐ Complies with Public Resources Code §§8890-8902

PLS Act Ref.: ☐ 8765(d) ☒ 8771 ☐ 8773 ☐ Other:  
Corner/  
Monument: ☒ Left as found ☐ Established ☐ Rebuilt ☒ Pre-Construction  
☐ Found and tagged ☐ Reestablished ☒ Referenced ☐ Post-Construction

Narrative of corner identified and monument as found, set, reset, replaced, or removed:

☒ See sheet #2 for description(s):

**FOUND PIN MONUMENT IN MONUMENT WELL. SET REFERENCE TIES PRIOR TO CONSTRUCTION.**

## SURVEYOR'S STATEMENT

This Corner Record was prepared by me or under my direction in conformance with

the Professional Land Surveyors' Act on February 3, 2020

Signed Denise Baker P.L.S. or R.C.E. No. P.L.S. #7947



## COUNTY SURVEYOR'S STATEMENT

**FEB 13 2020**

This Corner Record was received

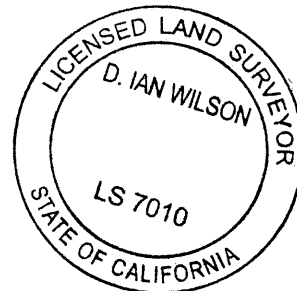
and examined and filed FEB 14 2020

Signed D. Ian Wilson P.L.S. or R.C.E. No. 7010

Title ALAMEDA COUNTY SURVEYOR

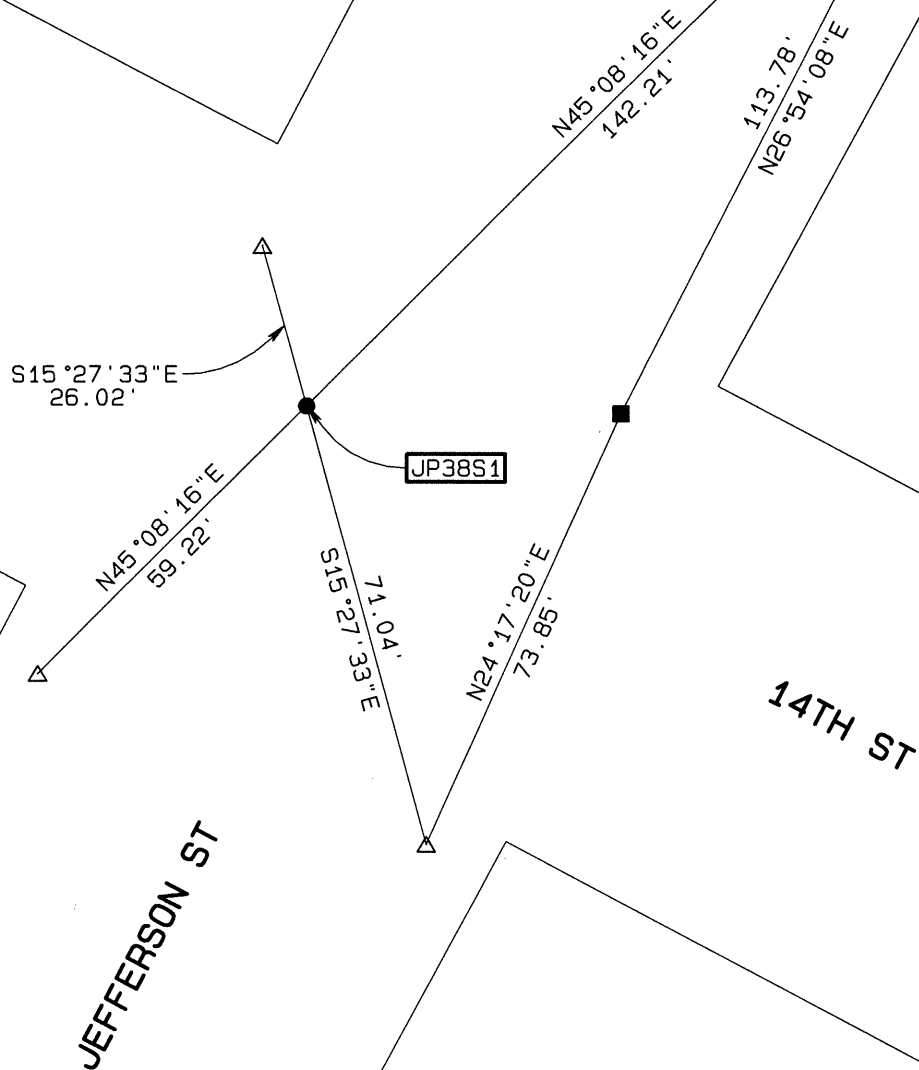
County Surveyor's Comment

City of Oakland Project #1004420



- FOUND BRASS DISC FLUSH WITH SIDEWALK PAVEMENT  
STAMP ILLEGIBLE
- FOUND PIN MONUMENT  
IN MONUMENT WELL
- △ SET CUT "+" IN CONCRETE, WITH TAG (LS 7947)

AA##A# ALAMEDA COUNTY MONUMENT ID



Prepared by:  
CONSTRUCTION SURVEY, INC.  
800 BERKELEY WAY, #201  
BERKELEY, CA 94710

JOB NO. 190902  
SCALE: 1"=30'  
12/4/2019