

BASIS OF BEARINGS - NOTES - LEGEND

Map of Tract 2490 as recorded in Book 48 pages 61 & 62 Alameda County Records was used as Basis of Bearings for this map.

Building Setback lines to be as required by the Ordinance Code of the County of Alameda Title 9, Chapter 2, and amendments thereto.

Distances shown from Monument lines to lot lines are at right angles to Monument line unless otherwise noted.

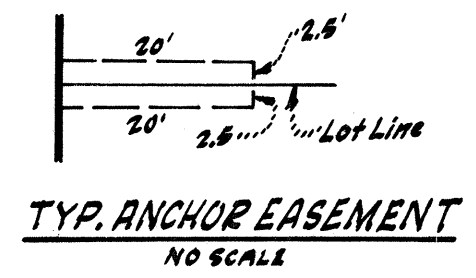
The blue border line indicates the boundary of land subdivided by this Map.

- Indicates Monument to be set.
- Indicates Found Monument.
- Indicates 3/4" I.P. to be set.
- Indicates Found 3/4" I.P. or as otherwise noted.
- △-----Indicates Angle Point.
- S.D.E.-----Indicates Storm Drain Easement.
- A.E.-----Indicates Anchor Easement.

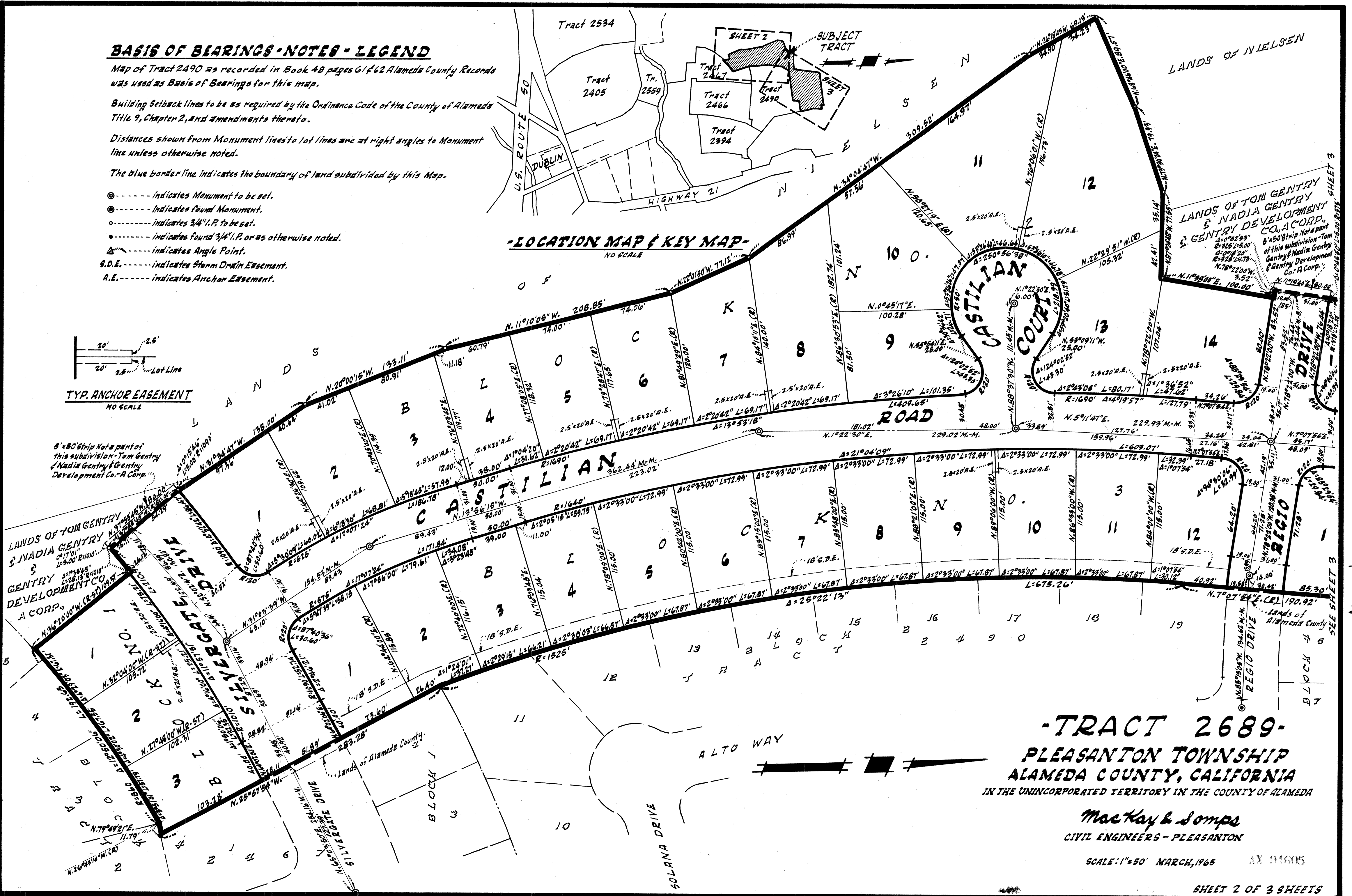
-LOCATION MAP & KEY MAP-

NO SCALE

NO SCALE



5'x80' Strip Not a part of this subdivision - Tom Gentry & Nadia Gentry Development Co. - A Corp.



-TRACT 2689-
PLEASANTON TOWNSHIP
ALAMEDA COUNTY, CALIFORNIA
IN THE UNINCORPORATED TERRITORY IN THE COUNTY OF ALAMEDA

MacKay & Somp
CIVIL ENGINEERS - PLEASANTON

SCALE: 1"=50' MARCH, 1965 AX 94605

SHEET 2 OF 3 SHEETS