

## Fw 190 & Ta 152 Pack

for UP2.01 or 4.09 modded IL2

Hello everybody,

It all began in 2009, on a November day, and because I wanted to make some Fw 190 IL2 cockpit labels easier to read, I posted a few questions on C6 forums, and someone called Daniel replied to my request. He's got quite an impressive documentation about Focke Wulf 190 planes of all types designed by Kurt Tank, so he gave me the necessary data for this project and also a few photoshoped tga files that Pierre Alfaro had previously made for him.

Daniel who since then has become a pal of mine, rapidly turned himself into the librarian of the new team that was just born thanks to pure chance. From now on he would spend hours and hours browsing through his books and cross checking all data he had, that sometimes were contradictory, in order to try and define with the utmost accuracy possible which instruments and equipment were fitted in the different cockpits of Fw190 and Ta152 planes.

Thanks to his precious knowledge, resulting of his crosschecks, we corrected whatever we could, using what I managed to make with Photoshop as a first attempt, then since we could no longer be happy with making cockpit labels easier to read here and there, we thought to ourselves:

“After all why not go further ...?”

Then, we gradually realised that we would have to modify IL2 code and the cockpits 3D. Thanks to UF\_Fernand who sent me his java tools, explained to me how to configure and use them, and 12F\_Milo who helped me cope with 3DsMax, we managed to give a few planes their genuine cockpit and bring corrections to some other ones, and we hope the result (that many among you have expected for so long) of two long years of labour to make all stock IL2 and slot Fw190s genuine, way more realistic, in cockpit view as well as from outside, will please you all.

### Crédits:

I know this is rather unusual, but I'll put them at the beginning simply because most folks don't read the read-me through ...

Daniel and I especially thank:

- Oleg Maddox and the Daidalos Team, without them all this would, of course, never have been possible.
- UF\_Fernand for his java help.
- 12F\_Milo for his private 3D tuition.
- Tiger\_33 for very actively taking part in the cockpits coding and for creating their sounds.
- Il/Jg51-Lutz for his java advice and for compiling this pack in SFS format.
- Mick for the French/English read me translation.
- All other modders who made all the new slot AC that are included in this pack. Here is the list:

FW 190 A2 (Waggle ,Hunin ,Flushy ,MrJolly ,Zorin ,Fucida ,Howlin ,Jafa ,SAS~CirX ,Sani)\*

FW 190 A3 (Waggle ,Hunin ,Flushy ,MrJolly ,Zorin ,Fucida ,Howlin ,Jafa ,SAS~CirX ,Sani)\*

FW 190 A31.32 ata (Sani) \*

FW 190 A3 1.42 ata (Sani) \*  
 FW 190 A4 (Oleg Maddox)  
 FW 190 A4 1.42 ata \*  
 FW 190 A5 (Oleg Maddox)  
 FW 190 A5 1.42 ata \*  
 FW 190 A5 1.58 ata \*  
 FW 190 A5 1.65 ata \*  
 FW 190 A5 U/14 (Blitz, Muas)\*  
 FW 190 A6 (Oleg Maddox)  
 FW 190 A6 \*  
 FW 190 A6/R8 \*  
 FW 190 A7 (UF\_Josse) \*  
 FW 190 A7 "Sturm" (UF\_Josse) \*  
 FW 190 A8 (Oleg Maddox)  
 FW 190 A8 1.65 ata \*  
 FW 190 A8/R11 (Claymore) \*  
 FW 190 A8 "Mistel"  
 FW 190 A9 (Oleg Maddox)  
 FW 190 A9 1.65 ata \*  
 FW 190 D9 "Eearly" (UF\_Josse) \*  
 FW 190 D9 1944  
 FW 190 D9 1.7 ata 1944 \*  
 FW 190 D9 "Late" 1945  
 FW 190 D9 "Late" 1.8 ata 1945 \*  
 FW 190 D9/R5 (UF\_Josse) \*  
 FW 190 D11 (FatDuck & DrJones, Waggle ,Hunin ,Flushy ,MrJolly ,Zorin ,Fucida, Cpt Farrel)\*  
 FW 190 D13 (FatDuck & DrJones, Waggle ,Hunin ,Flushy ,MrJolly ,Zorin ,Fucida, Cpt Farrel)\*  
 FW 190 D14 "Proto" (Gerd) \*  
 FW 190 D14 (Gerd) \*  
 FW 190 D15 (Gerd) \*  
 FW 190 F1 (Aviaskins) \*  
 FW 190 F2 (Aviaskins) \*  
 FW 190 F2/Trop (Claymore) \*  
 FW 190 F3 (Aviaskins) \*  
 FW 190 F8 (Oleg Maddox)  
 FW 190 F8 "Late" (Aviaskins) \*  
 FW 190 F8 "Panzer Blitz" (Aviaskins) \*  
 FW 190 F8/U1(Char\_Aznable, \_1SMV\_Gitano, 6S.Maraz, 6Sc.Tamat et 150GCT\_Veltro)\*  
 FW 190 F9 (Aviaskins) \*  
 FW 190 F9 "Panzer Blitz" (Aviaskins) \*  
 FW 190 G1 (Aviaskins) \*  
 FW 190 G2 (Aviaskins) \*  
 FW 190 G3 (Aviaskins) \*  
 FW 190 G8 (Blitz, Chameleon, DeSAD, Lefty, Myshlayevsky, RUDY, Aviaskins) \*  
 TA 152 B (Claymore) \*  
 TA 152 C (Oleg Maddox)  
 TA 152 C0 (Sani) \*  
 TA 152 C1 (Sani) \*  
 TA 152 C3 (Sani) \*  
 TA 152 H0 (Sani) \*  
 TA 152 H1 (Oleg Maddox)

All cockpits have been revamped using Capt Flushgarden's former work (a.k.a [John Wallin Liberto](#)). He gave me all the files he managed to save from a HD crash, and all Fw 190s and Ta 152s are fitted with the various improvements that were brought by other mods or modders, all this being gathered here in the pack, so that no other choice is to be made by the community.

Since we mainly attempted to add as many historical detail as possible, in the operating as well as in the visual domain, I also decided to improve the external 3D, so that the AC are now more realistic, but also to harmonize all Fw190 related mods.

## A) External improvements.

As you can see on the following screenshots all A, D , F, and G Fw190s and B, C and H Ta152s now have an improved external 3D and more than that, all skins that were released these past 10 years remain compatible !

- True AC shadows, except for Ta152s that keep their original ones.
  - All unwanted reflections on series A, D, F and G have been corrected.
  - Thinner antenna wires respectful of the canopy type and that move with a running board that spreads when the canopy opens.
  - New rounder wheels, with self adapting skins according to the AC model and the year it went into service.
  - A more relevant Pitot tube, now correctly placed on A8s and A9s.
  - Engine cowlings that now respect the genuine diameter and number of turbine cooling blades for BMW 801 fitted Fw190s, D9s being now fitted with the D11s and D13s cooling turbine 3D.
- 
- Pilot's right arm and stick animation.

Stick to the right





Stick to the left



Pulling the stick



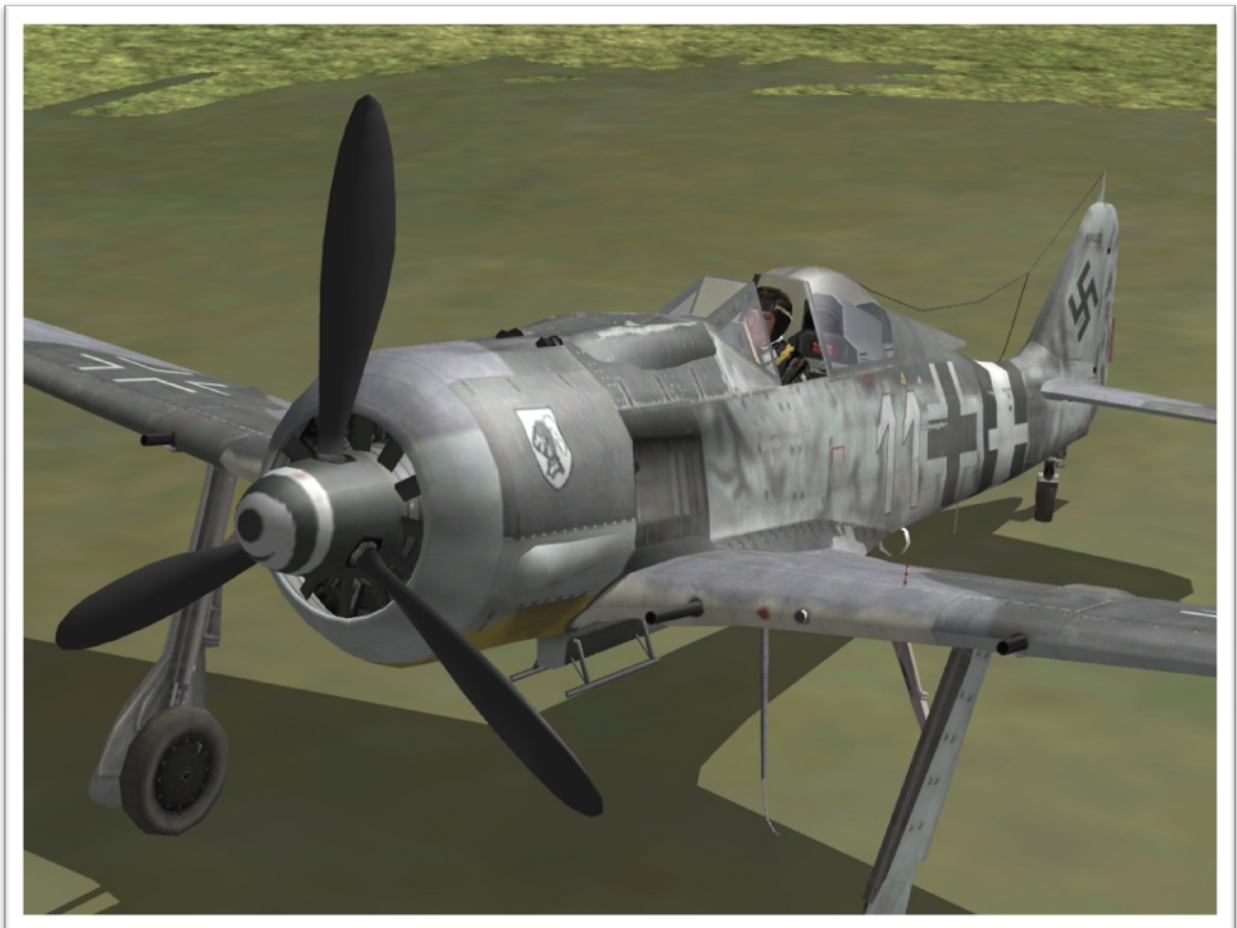


- New Early and Late opening canopies, remapped for skimmers.

Early type canopy (flat one)



Late type canopy (rounded one)



- New metal or wooden propellers, the wooden one having different blades according to the model.

Metal propeller VDM-9.12176-A3 from A2 to A8 (same with F and G)



Wooden VDM-9.12157H3; type A9 and F9





And VS-9 like here a D9



Or also a Ta 152 H0





That have different reactions according to their damage:







Vintage pictures for you to compare





- Realistic landing gear kinematics, with internal covers appearing or disappearing according to the given loads, external carriage position indicator and articulated connecting rods.



- When the ETC 501 rack is fitted to the A3, A4, A5 and A6 to carry a tank or a bomb, internal covers are replaced with obturating devices.



- Flame exhausts accurately placed for BMW801 fitted Fw190s and a new rear wheel for the Fw 190 A5/U14





- A Late rudder for Fw 190 D9 Late and D9/R5



- New pylons for external loads:

A remodelled ETC 501 and an ER4 for 4 Sc50 loads here on a F2/Trop





Recce photo pod for the Fw 190 A3/U3



ETC 504 rack for the D series



"Panzerblitz" rocket launchers for the D9/R5



And the F8, F9"PB"





- New guns and the "Kamera Robot II" (Guncam):

Mg 17, Mg 151/20 and Mg FF on an A4 (notice the external landing gear position indicator)



Mg 151/20 and Mk108 on an A7/Sturm (notice the reinforced canopy side glass)





4 Mg 151/20 on the A8/R11 (notice the lights and the flame damper)



None of these weapons are shown if you choose the " empty " weapons option



- ETC 503 for the Ta 152 C X4 load



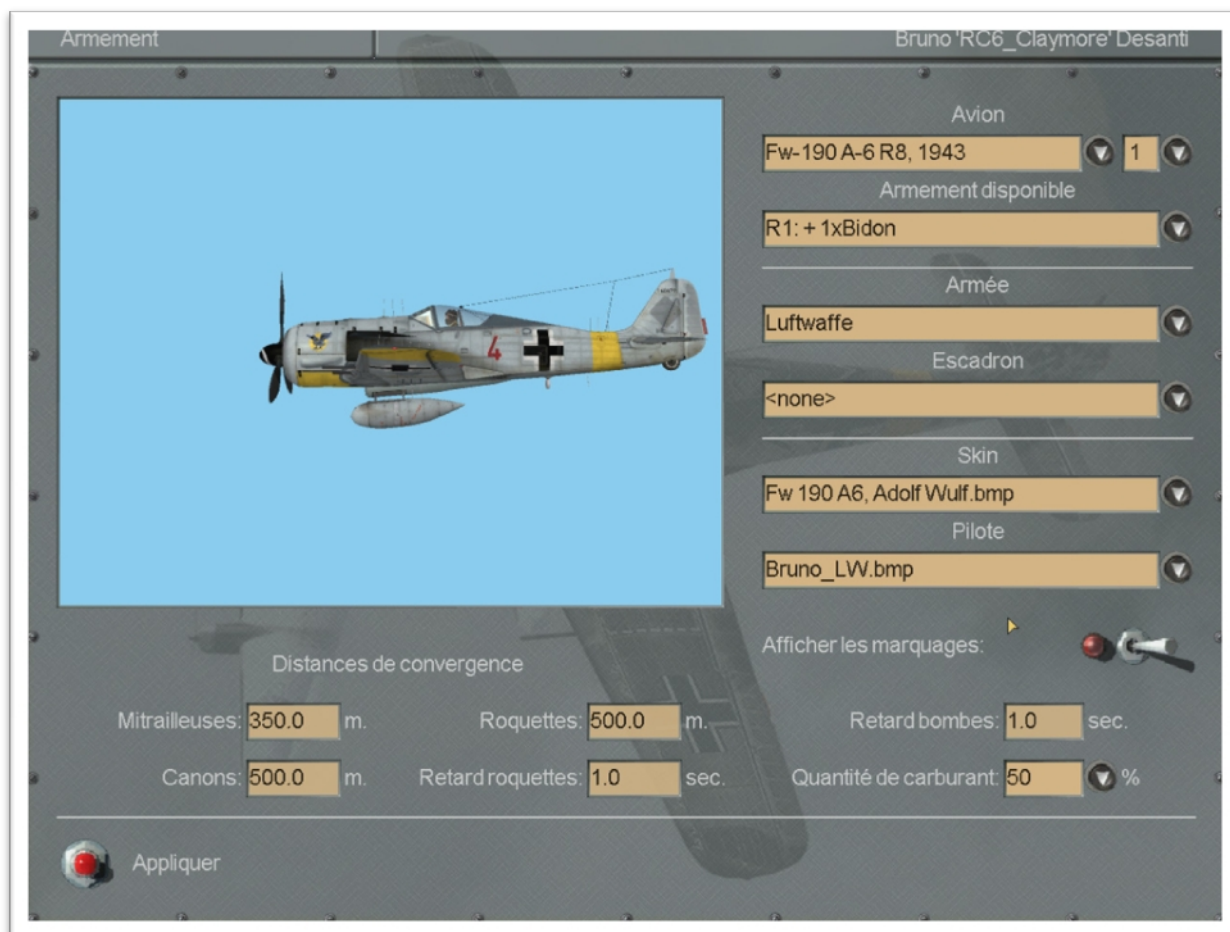
- External 3D features of the Fw 190 A6/R8

This aircraft can be fitted with different types of antennas, the most famous being the airborne FuG 127 Neptun J-2 radar ones, but the only survivor that is preserved in South Africa is fitted with a radar variant that has less antennas, only placed on the upper wings as you can see in this ["Walkaround"](#).

Sani, who first initiated this project, helped me make that version taking into account weapons options since "PN+LU", aka "LULU", is fitted with Mk108 wing gondolas contrary to the other ones, but unfortunately I couldn't manage to display or not, all those different types of antennas in the weapons window. But rest assured that, although you will always see the same type of antennas in the weapons window, once you are aboard your plane, you'll see the right type of antenna, like here bellow.



In the QMB, I chose a drop tank fitted A6/R8.



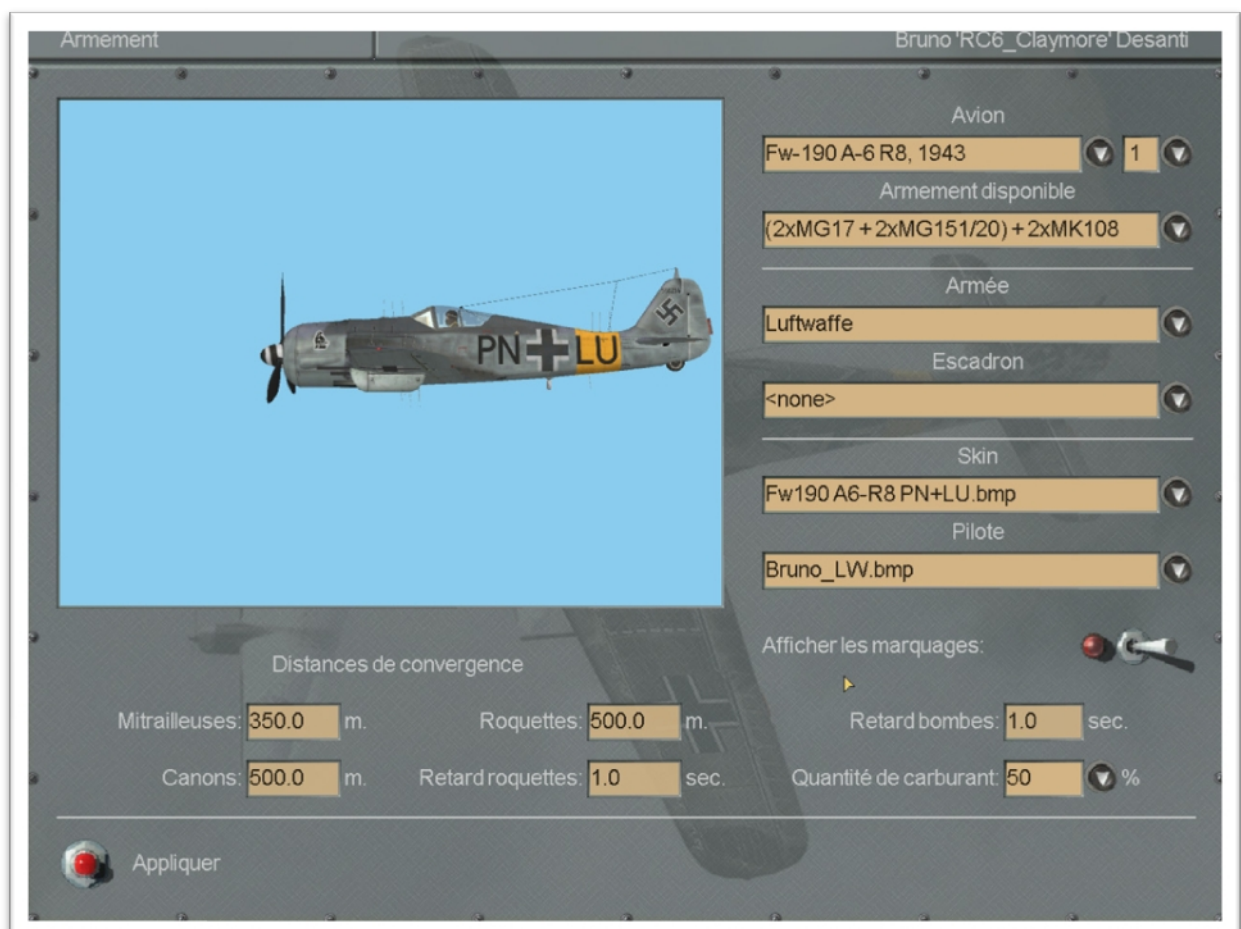
Here in mission



No bug, I have the vertical antennas in front of the windshield, and also the flame dampers, one of them easily visible on the right side of the fuselage.



Now my choice is " PN+LU ", the antennas still are the same in the QMB window





Once in flight, the antennas match the real " PN+LU ".



## B) General operating.

Here are the main changes regarding the general operating of the planes and their cockpit.

### 1) Canopy in real life.

Because of the aerodynamics of the plane it was totally impossible for the pilot to open the canopy in flight, this was only possible on the ground. Opening the canopy was operated by using a crank that had to be drawn from a fixed wheel in order to draw the lock from the holes in the wheel.

Here it is without the crank:



For a complete opening of the canopy, seven clockwise crank turns were necessary. Since it is impossible to open it in flight, then the pilot who intended to bail out was in big trouble, so Kurt Tank's team designed a canopy jettison device triggered by explosive bolt, situated in rear tube, in line with the canopy.

This probably is the ancestor of the modern ejection seat canon...

To trigger the explosion the pilot had to abruptly push the lever that was secured by a wire, you will find it on the right of the wheel on the picture.



## 2) Canopies in this pack.

The new canopy operating code has been totally rewritten by Tiger\_33 who also created the opening and closing sounds and the switches sounds. He also programmed new indicator lights and new gauges, the details of which will be further given according to the cockpit type.

- Opening – Closing.

When climbing in your cockpit, plane on the ground, you will find your canopy open, contrary to real life (one of the rare times when we stretched reality). You will be able to open and close it on the ground and in flight but only at a speed below 240 km/h. Beyond that speed it simply won't open if it is closed and will be jettisoned if you forgot to close it prior to take off, thus creating a drag, you will then be flying your mission in a "convertible" plane

Why such a twist? Well this is to allow you to use CrazyFlak's "what if" navy Fw190 versions the day when they are no bugs left, I am still working to make them compatible with this pack.

When you either open or close the canopy you will see the crank turn 7 times and will be also be able to hear the special crank sound supposed to operate the canopy for 3,9 seconds.

If you open it while the engine is running, you will hear the external engine sound, and hear the internal engine sound once you close it.

- Bailing out.

When you have to bail out, cockpit view will switch to external wide view, you will hear the explosive bolt sound and you will then see the canopy being jettisoned like in stock game, then you will switch to external view and see the pilot bail out.

- Emergency landing, landing gear not lowered.

If you have to make an emergency landing in the wild, you will of course have to check your speed, because as soon as your prop touches the ground your canopy will automatically open, thus simulating the fact that the pilot is desperately trying to evacuate the plane. He will then jump from the aircraft as soon as the canopy is wide open, so the more you land at a too high speed, the less your pilot has time to make a secure exit.

## 3) Locking the rear wheel.

You now no longer have the option of locking the rear wheel using the usual IL2 key, but you will be able to lock/unlock it at will by simply moving the stick : If you slightly pull the stick while taxiing the rear wheel will lock itself provided it is on axis, and will unlock as soon as the stick goes back to neutral, this is very handy when you take off because it will be easier to keep the plane in line, but be careful not to use too much rudder on one side or the other one, because when the tail lifts from the ground you may be very surprised

#### 4) A new trim

Twister made it for Bf109s and SAS-Anto for the Me 262, I have added it also for the planes in this pack. This modifies the trim operation, like all IL2 stock aircraft when you now trim your AC to stabilize it on level flight, it is the elevators that move now, like in real life it is only the horizontal stabilizer that moves, flaps remain independent of depth trim

Neutral trim



Positive trim







Although we couldn't check it during our tests simply because it is not that easy to choose where you are going to be hit while being shot at, this new modification now allows you , when your elevator control has been hit, to still control altitude thanks to the trim and may be return to base.

## 5) Engine management.

- Magnetos.

They are switched in case you are flying an air start mission, but their default position is Off if you are on the ground, so you will have to switch them On in order to start the engine.

- Propeller pitch.

The Fw190s fitted with a BMW 801 and DB 603 now come with a switch on the left console that will move when you shift from automatic to manual position and backwards.



- The MW50 or GM1.

D9s, D11s and D13s come with a switch on the left console that works the same as the one for propeller auto/manual pitch but it also has an indicator light that switches On when the MW50 is engaged.



A pressure gauge is linked to the switch and indicator light on the secondary dashboard, on the right of the fuel gauge.

MW50 OFF, pressure 0



MW50 ON, pressure 4.5 Kg/cm²





They all will smoke when you fly full throttle and/or with MW50 engaged when available. This will also affect the Yaks engine smoke for example, because of an excessive rich mixture, a lot of tests were necessary to find a good compromise between the two, but you will however have the option to activate or deactivate it according to your liking (see Activating the Pack)



#### 6) Weapons management.

- If your Fw 190 A2, A3, A4, A5 or A6 is armed, the cowling MG17 indicator lights will be lit as long as there is still ammo left, and not when there is no ammo left like in stock game, because they actually indicated that the weapons were live. This was activated by one of the two switches situated between the MG 17 and wing root MG 151 ammo counters (this, by the way, is what is written in German just underneath them)



- The "Durchladen" of the central console which fits the A2, A3, A4, A5, A6 and A6/R8 is now functional and deducts the external MG FF or MG151/20 ammo five by five. MG FF have 55 rounds each on the A2 and A3, 60 rounds on the A4 and 90 rounds on the A5, and the MG 151/20 have 140 rounds on the A6 and A6/R8, the two red indicator lights work like those of the MG17.
- When you open fire, the trigger, that also had a safe position, swings forward and automatically returns to its safe position after you cease firing.

Here an A2 with its Kg14



Here an A5





## 7) Fuel management in real life.

Fuel was stored in two distinct tanks found under the cabin floor. The front tank, « Vorn », had a capacity of 232 litres, the rear one, « Hinten », had 292 litres. Each tank was fitted with an electric pump that fed gas to the engine injection pump, it was thus possible to select one of the two tanks in order to manage fuel at best and also keep a good balance of the plane. The aircraft fitted with a 300 litres drop tank, when that tank was selected, supplied gas through a pressurised device to the front tank that thus became the main tank. It was possible to monitor both gas pumps thanks to two indicator lights displayed on the right of the lower console, these indicator lights were lit as long as the corresponding pump was working.

## 8) Fuel management in this pack.

Since it is unfortunately impossible to select one tank or the other one, without deeply modifying IL2 code, we had to use what was in the stock code and slightly adapt it to come closer to real life fuel management. So the code will first pump fuel from the drop tank if you are fitted with it, before switching to the main tank in the case of a single engined AC, or two tanks for a twin engined one. There are only two indicator lights, the first one tells you that the pump is fuelling the engine and the second one that there is only a small quantity of gas left, so nothing new here, and I'll further give more details about the way they are displayed according to the type of cockpit, but here is what is new:

➤ Let's take for example the A3 cockpit.

When you climb aboard, magnetos are on 0 and engine is stopped.



Magnetos on 1+2 and engine start, one the pumps indicator lights goes on, here the rear tank one, it simulates the engine being fuelled with gas.



You fly your mission and are returning to base but gas level is dangerously going down until the " low fuel " indicator light turns On, from now on you have to rapidly find an air strip and land because you only have 10% fuel left, approximately a 10 to 15 minutes flight





Bad luck, just when you spot an air strip your engine stops, you've just run out of gas.



The " low fuel " indicator light is still On,  
but the fuel pump light has gone Off simply because there is nothing left to pump.



## 9) Pitot warm up.

On all Fw 190s and Ta 152s, the Pitot tube on the right wing gives the AC speed, by calculating the air pressure that flows inside it, and since air temperature goes down when you climb, there is a risk the Pitot tube will freeze. So in order to prevent it, an electric resistance automatically warmed up the Pitot tube when temperature was lower than  $-20^{\circ}\text{C}$ .

IL2 code gives us the temperature according to the map, so this allowed us to automatically switch on the Pitot warm up light according to the external air temperature, regardless of the map you are using. In consequence the indicator light will switch on at a different altitude if you use the MTO, Smolensk or Winter Murmansk map. You will find it on the left of the main board.

It may have a rectangular shape like here on this A2







Or a round shape like here on this Ta 152 H0



## 10) Pressure monitoring.

- Fuel and oil

Did you ever notice that the fuel and oil gauge on all Fw 190s et Ta 152s (with a yellow and red rim on the screen below) never monitored anything? As for me I didn't, until I found somewhere in the original code a hint that it was deactivated for an unknown reason.

Well now both needles are active as soon as you start the engine and gradually go up until they reach nominal pressure according to the engine running speed, same with the pressure gauge for MW50 on the D9, D11 and D13.

Fuel pressure is displayed in the yellow zone and oil pressure in the red one:

Engine stopped



Idle



37%





### 11) Warning indicators.

Ta 152s being high altitude aircraft, oxygen managing was very important for their pilots. We found technical note "L.Dv.T.2152 H-0/FI Teil 1 "Bedienungsvorschrift-FI Teil 1 Bedienungskarte für den Flugzeugführer" dated january1945, especially part "IX - Höhenflug" and "Rettungs-Sicherheitsgerät", in "A" where it is precisely indicated:

"A. In 4000 m Höhe Sauerstoffatmung beginnen und in Höhe über 4000 m immer bei behalten"

In other words, from 4000m upwards the pilot had to adjust his mask and oxygen flow, a warning indicator went On, to draw his attention.



### 12) Landing gear and flaps position indicator "12 Lampen".

There is an indicator near the throttle, on the left console of Fw 190 A2s, A3s, A4s, A5s, A6s and A6/R8s, that displays the landing gear and flaps position, and like the German designation shows, it has 12 green, red or amber lights, divided into three zones, a central one with 3 red and 3 green lights for the landing gear, "Rollwerk" in German, and two other ones situated on the right and left, each having 1 red, 1 amber and 1 green light for right and left flaps or "Landeklappen" in German.

All this works like in stock game, we only added the amber colour to the "Start" flaps indicator.

Here is a picture of the real instrument.



When all red lights are On, the landing gear and flaps are retracted.





When all green lights are On, the landing gear and flaps are lowered.



Before take off, landing gear out (that's a good thing) and flaps 18°, "Start" amber light is on.



Here landing gear out and flaps retracted.



### C) JsGME activated options

You of course understand that since it is impossible to make each and every version of the FW190 cockpits, we made the choice of activating a few options through JsGME, either in order to make these pack's AC compatible with other mods which are thus partly included, such as Askania EZ42 gyro sight on the Ta 152 H-1, or to allow you to change a few things according to your liking.

- Like replacing "A.G.O" logo by the "Focke Wulf" one, in the A4 cockpit





- Replacing A8, A9, D9, F8, F9 and G8 rounded canopies by the flat "Early" type like here on a D9 Late.



- Replacing the day A6/R8 and A8/R11 reticle by a more appropriate night type.

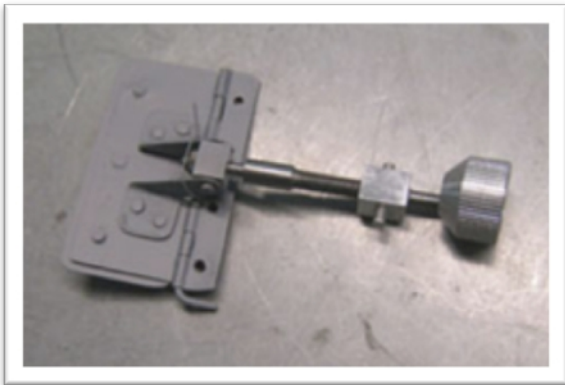


## D) 3D improvements.

### ➤ Cockpit ventilation.

Except for the Ta 152 H that had a pressurised cockpit, in all Fw 190s and Ta 152 B and C the pilot could open a small flap in order to get some fresh air in the cockpit, by using a small wheel.

Here is the device during the [Fw 190 A3 "Black 3"](#) W.Nr 0132219 restoration in Norway



And in this pack, here on an A3, it is situated on the other side on the A6/R8 like shown on the only existing one that you can see in South Africa.





► Inscriptions.

Each time it was possible to read them with certitude, we added the inscriptions found in such or such cockpit. They are either found on riveted plates, or hand painted in white directly on the panel. These inscriptions both concerned the pilot for different stages of flight like landing gear or flaps operating, or designating an instrument, or the mechanic so that he could maintain electric cables.

All you see in the cockpits perfectly meets our documentation.

Here are a few examples for the Fw 190 A8/R11 panel.



➤ Navigation map.

We slid a navigation map in the map holder, like the one pilots took with them. They are representative of the fronts where Fw 190s and Ta 152s were in operation.

They are mostly made from different squads' printable 2D IL2 maps.

Example here with the "Kanal" map aboard an A3





## E) Cockpits features.

### 1) The Fw 190 A2 & A3.

- Very little differences between them, the A2 has a Kg14 stick, the A3 below a Kg13b one.



- |                            |                                    |
|----------------------------|------------------------------------|
| 1) Mg17 indicators         | 12) Fuel and Oil pressure          |
| 2) ZSKK4                   | 13) Oil temp                       |
| 3) Revi 12                 | 14) Fuel pump                      |
| 4) Clock                   | 15) Low Fuel indicator             |
| 5) Altimeter               | 16) Fuel gauge                     |
| 6) Pitot warmer            | 17) Prop Pitch indicator           |
| 7) Air Speed indicator     | 18) Auto – Manual prop switch      |
| 8) Turn and Bank indicator | 19) Magnetos                       |
| 9) Compass                 | 20) Durchladen                     |
| 10) Intake Pressure        | 21) Landing Gear + Flaps indicator |
| 11) Engine rpm             | 22) Trim indicator                 |

## 2) The Fw 190 A4, F1 & G1.



- |   |                                    |
|---|------------------------------------|
| 1) Mg17 indicators                              | 12) Fuel and Oil pressure          |
| 2) ZSKK4  | 13) Oil temp                       |
| 3) Revi 12                                      | 14) Fuel pump                      |
| 4) Clock  | 15) Low Fuel indicator             |
| 5) Altimeter                                    | 16) Fuel gauge                     |
| 6) Pitot warmer                                 | 17) Prop pitch indicator           |
| 7) Air Speed indicator                          | 18) Engine rpm                     |
| 8) Artificial Horizon + Turn and Bank indicator | 19) Auto - Manual prop switch      |
| 9) Vertical Speed indicator                     | 20) Magnetos                       |
| 10) Compass                                     | 21) Durchladen                     |
| 11) Intake Pressure                             | 22) Landing Gear + Flaps indicator |
|   | 23) Trim indicator                 |



### 3) The Fw 190 A5, A6, F2, F3, G2 & G3.



- |   |                                    |
|---|------------------------------------|
| 1) Mg17 indicators                              | 12) Fuel and Oil pressure          |
| 2) ZSKK4  | 13) Oil temp                       |
| 3) Revi 12                                      | 14) Low Fuel indicator             |
| 4) Clock  | 15) Fuel gauge                     |
| 5) Altimeter                                    | 16) Prop Pitch indicator           |
| 6) Pitot warmer                                 | 17) Engine rpm                     |
| 7) Artificial Horizon + Turn and Bank indicator | 18) Auto - Manual prop switch      |
| 8) Air Speed indicator                          | 19) Magnetos                       |
| 9) Intake pressure                              | 20) Durchladen                     |
| 10) Compass                                     | 21) Landing Gear + Flaps indicator |
| 11) AFN2  | 22) Trim indicator                 |

4) The Fw 190 A6/R8.



- |  |                                    |
|--|------------------------------------|
| 1) Mg17 indicators                             | 12) Fuel and Oil pressure          |
| 2) Radar Scope (inactive)                      | 13) Oil temp                       |
| 3) Revi 12                                     | 14) Low Fuel indicator             |
| 4) Clock                                       | 15) Fuel gauge                     |
| 5) Altimeter                                   | 16) Prop Pitch indicator           |
| 6) Pitot warmer                                | 17) Engine rpm                     |
| 7) Artificial Horizon +Turn and Bank indicator | 18) Auto – Manual prop switch      |
| 8) Air Speed indicator                         | 19) Magnetos                       |
| 9) Intake pressure                             | 20) ZSKK4                          |
| 10) Compass                                    | 21) Durchladen                     |
| 11) AFN2                                       | 22) Landing Gear + Flaps indicator |
|  | 23) Trim indicator                 |



5) The Fw 190 A7 & A7 "Sturm".



- |  |                               |
|--|-------------------------------|
| 1) Mg131 (A7) Mk108 (A7Sturm ) indicators      | 11) AFN2                      |
| 2) ZSKK4 (cowling and wing root)               | 12) Fuel and Oil pressure     |
| 3) Revi 16b                                    | 13) Oil temp                  |
| 4) Clock                                       | 14) Low Fuel indicator        |
| 5) Altimeter                                   | 15) Fuel gauge                |
| 6) Pitot warmer                                | 16) Prop Pitch indicator      |
| 7) Artificial Horizon +Turn and Bank indicator | 17) Engine rpm                |
| 8) Air Speed indicator                         | 18) Auto – Manual prop switch |
| 9) Intake pressure                             | 19) Magnetos                  |
| 10) Compass                                    | 20) ZSKK4                     |
|  | 21) Landing Gear indicator    |
|  | 22) Trim indicator            |

6) The Fw 190 A8, A9, F8Late, F8 Pb, F9 Pb & G8.



- |   |                               |
|---|-------------------------------|
| 1) ZSKK4 (cowling and wing root)                | 12) Oil temp                  |
| 2) Revi 16b                                     | 13) Fuel gauge                |
| 3) AFN2   | 14) Prop Pitch indicator      |
| 4) Altimeter                                    | 15) Fuel pump                 |
| 5) Pitot warmer                                 | 16) Low Fuel indicator        |
| 6) Air Speed indicator                          | 17) Engine rpm                |
| 7) Artificial Horizon + Turn and Bank indicator | 18) Auto – Manual prop switch |
| 8) Vertical Speed indicator                     | 19) Magnetos                  |
| 9) Compass                                      | 20) Landing Gear indicator    |
| 10) Intake pressure                             | 21) Trim indicator            |
| 11) Fuel and Oil pressure                       | 22) Clock                     |



## 7) The Fw 190 A8/R11



- |   |                               |
|---|-------------------------------|
| 1) Radar Scope (inactive)                       | 13) Fuel gauge                |
| 2) Revi 16b                                     | 14) Prop Pitch indicator      |
| 3) AFN2   | 15) Fuel pump                 |
| 4) Altimeter                                    | 16) Low Fuel indicator        |
| 5) Pitot warmer                                 | 17) Engine rpm                |
| 6) Air Speed indicator                          | 18) Auto – Manual prop switch |
| 7) Artificial Horizon + Turn and Bank indicator | 19) Magnetos                  |
| 8) Vertical Speed indicator                     | 20) Durchladen                |
| 9) Compass                                      | 21) Drop tank indicator       |
| 10) Intake pressure                             | 22) ZSKK4                     |
| 11) Fuel and Oil pressure                       | 23) Landing Gear indicator    |
| 12) Oil temp                                    | 24) Trim indicator            |

8) The Fw 190 D9, D9 "Early" & D9/R5.



- |   |                               |
|---|-------------------------------|
| 1) Weapons indicators                           | 13) Coolant Temp              |
| 2) ZSKK4 (cowling and wing root)                | 14) Oil Temp                  |
| 3) Revi 16b                                     | 15) MW50 pressure             |
| 4) AFN2   | 16) Fuel gauge                |
| 5) Altimeter                                    | 17) Fuel pump                 |
| 6) Pitot warmer                                 | 18) Low Fuel indicator        |
| 7) Air Speed indicator                          | 19) Engine rpm                |
| 8) Artificial Horizon + Turn and Bank indicator | 20) Magnetos                  |
| 9) Vertical Speed indicator                     | 21) MW50 switch and indicator |
| 10) Compass                                     | 22) Landing Gear indicator    |
| 11) Intake pressure                             | 23) Trim indicator            |
| 12) Fuel and Oil pressure                       | 24) Clock                     |

- Rumpf L: stands for left cowling Mg 151/20.
- Rumpf R: stands for right cowling Mg 151/20.
- Flügel R: stands for right wing root Mg 151/20 only.



## 9) The Fw 190 D9 Late.



- |   |                               |
|---|-------------------------------|
| 1) Weapons indicators                           | 13) Coolant Temp              |
| 2) ZSKK4 (cowling and wing root)                | 14) Oil Temp                  |
| 3) Askania EZ42 gyro sight                      | 15) MW50 pressure             |
| 4) AFN2   | 16) Fuel gauge                |
| 5) Altimeter                                    | 17) Fuel pump                 |
| 6) Pitot warmer                                 | 18) Low Fuel indicator        |
| 7) Air Speed indicator                          | 19) Engine rpm                |
| 8) Artificial Horizon + Turn and Bank indicator | 20) Magnetos                  |
| 9) Vertical Speed indicator                     | 21) MW50 switch and indicator |
| 10) Compass                                     | 22) Landing Gear indicator    |
| 11) Intake pressure                             | 23) Trim indicator            |
| 12) Fuel and Oil pressure                       | 24) Clock                     |

- Rumpf L: stands for left cowling Mg 151/20.
- Rumpf R: stands for right cowling Mg 151/20.
- Flügel R: stands for right wing root Mg151/20 only.

## 10) The Fw 190 D11 & D13.



- |   |                               |
|---|-------------------------------|
| 1) Weapons indicators (external)                | 13) Coolant Temp              |
| 2) ZSKK4 (cowling and wing root)                | 14) Oil Temp                  |
| 3) Revi 16b                                     | 15) MW50 pressure             |
| 4) AFN2   | 16) Fuel gauge                |
| 5) Altimeter                                    | 17) Fuel pump                 |
| 6) Pitot warmer                                 | 18) Low Fuel indicator        |
| 7) Air Speed indicator                          | 19) Engine rpm                |
| 8) Artificial Horizon + Turn and Bank indicator | 20) Magnetos                  |
| 9) Vertical Speed indicator                     | 21) MW50 switch and indicator |
| 10) Compass                                     | 22) Landing Gear indicator    |
| 11) Intake pressure                             | 23) Trim indicator            |
| 12) Fuel and Oil pressure                       | 24) Clock                     |



## 11) The Fw 190 D14 & D15.



- |   |                               |
|---|-------------------------------|
| 1) Weapons indicators (external)                | 13) Coolant Temp              |
| 2) ZSKK4 (prop hub and wing root)               | 14) Oil Temp                  |
| 3) Revi 16b                                     | 15) Prop pitch indicator      |
| 4) AFN2   | 16) Fuel gauge                |
| 5) Altimeter                                    | 17) Fuel pump                 |
| 6) Pitot warmer                                 | 18) Low Fuel indicator        |
| 7) Air Speed indicator                          | 19) Engine rpm                |
| 8) Artificial Horizon + Turn and Bank indicator | 20) Magnetos                  |
| 9) Vertical Speed indicator                     | 21) MW50 switch and indicator |
| 10) Compass                                     | 22) Landing Gear indicator    |
| 11) Intake pressure                             | 23) Trim indicator            |
| 12) Fuel and Oil pressure                       | 24) Clock                     |

## 12) The Fw 190 A8 Mistel.



- |   |  |
|---|--|
| 1) ZSKK4 (cowling and wing root)                | 13) Fuel gauge                                     |
| 2) Revi 16b                                     | 14) Prop Pitch indicator                           |
| 3) AFN2   | 15) Fuel pump                                      |
| 4) Altimeter                                    | 16) Low Fuel indicator                             |
| 5) Pitot warmer                                 | 17) Engine rpm                                     |
| 6) Air Speed indicator                          | 18) Magnetos                                       |
| 7) Artificial Horizon + Turn and Bank indicator | 19) Auto – Manual Prop switch                      |
| 8) Vertical Speed indicator                     | 20) Landing Gear indicator                         |
| 9) Compass                                      | 21) Ju 88 Dropping indicator                       |
| 10) Intake pressure                             | 22) Ju 88 Prop Pitch indicator                     |
| 11) Fuel and Oil pressure                       | 23) Ju 88 Intake Pressure and Engine rpm indicator |
| 12) Oil temp                                    |  |



### 13) The Ta 152 B, C, C0, C1, C3.

- Very few differences between those 5 aircraft. The X4 joystick disappears when that load is not available according to the AC version and is replaced by a prop pitch indicator. The C1 is fitted with the Askania EZ42 gyro sight



- |  |                                    |
|--|------------------------------------|
| 1) Weapons indicators (external, wing root and prop hub) | 14) Fuel and Oil pressure          |
| 2) ZSKK4 (external and wing root)                        | 15) Coolant Temp                   |
| 3) Revi 16b (EZ 42 on the C1)                            | 16) Oil Temp                       |
| 4) AFN2  | 17) Fuel gauge                     |
| 5) Oxygen mask warning indicator                         | 18) Fuel pump                      |
| 6) Altimeter   | 19) Low Fuel indicator             |
| 7) Pitot warmer  | 20) Engine rpm                     |
| 8) Air Speed indicator                                   | 21) Auto – Manual prop switch      |
| 9) Artificial Horizon + Bank indicator                   | 22) MW50 switch                    |
| 10) Vertical Speed indicator                             | 23) Landing Gear + Flaps indicator |
| 11) Compass  | 24) Magnetos                       |
| 12) Intake pressure                                      | 25) Trim indicator                 |
| 13) MW50 indicator                                       | 26) Clock                          |

- Flügel L: stands for left wing root Mg151/20.
- Rumpf L: stands for left cowling Mg 151/20.
- Motor K: "Motor Kanone" stands for the prop hub MK 108.
- Rumpf R: stands for right cowling Mg 151/20.
- Flügel R: stands for right wing root Mg151/20.

# 14) The Ta 152 H0.



- |  |                                    |
|--|------------------------------------|
| 1) Weapons indicators (wing root and prop hub) | 13) Fuel and Oil pressure          |
| 2) ZSKK4 (wing root and prop hub)              | 14) Coolant Temp                   |
| 3) Revi 16b                                    | 15) Oil Temp                       |
| 4) AFN2  | 16) Fuel gauge                     |
| 5) Oxygen mask warning indicator               | 17) Outside Temp                   |
| 6) Altimeter                                   | 18) Fuel pump                      |
| 7) Pitot warmer                                | 19) Low Fuel indicator             |
| 8) Air Speed indicator                         | 20) Engine rpm                     |
| 9) Artificial Horizon + Bank indicator         | 21) Auto – Manual prop switch      |
| 10) Vertical Speed indicator                   | 22) GM1 switch                     |
| 11) Compass                                    | 23) Landing Gear + Flaps indicator |
| 12) Intake pressure                            | 24) Magnetos                       |
|  | 25) Trim indicator                 |

- Flügel L: stands for left wing root Mg151/20..
- Motor K: "Motor Kanone" stands for the prop hub MK 108.
- Flügel R: stands for right wing root Mg151/20.



## 15) The Ta 152 H1.



- |  |  |
|--|--|
| 1) Weapons indicators (wing root and prop hub) | 14) Fuel and Oil pressure                  |
| 2) ZSKK4 (wing root and prop hub)              | 15) Coolant Temp                           |
| 3) Askania EZ42 (if option activated)          | 16) Oil Temp                               |
| 4) AFN2  | 17) Fuel gauge                             |
| 5) Oxygen mask warning indicator               | 18) Outside Temp                           |
| 6) Altimeter                                   | 19) Fuel pump                              |
| 7) Pitot warmer                                | 20) Low Fuel indicator                     |
| 8) Air Speed indicator                         | 21) Engine rpm                             |
| 9) Artificial Horizon + Bank indicator         | 22) GM1 switch                             |
| 10) Vertical Speed indicator                   | 23) MW50 switch                            |
| 11) Compass                                    | 24) Landing Gear and Flaps indicator       |
| 12) Intake pressure                            | 25) Magnetos                               |
| 13) MW50/GM1 indicator                         | 26) Outside and Cockpit pressure indicator |
|  | 27) Trim indicator                         |

- Flügel L: stands for left wing root Mg151/20..
- Motor K: "Motor Kanone" stands for the prop hub MK 108.
- Flügel R: stands for right wing root Mg151/20.

## F) INSTALLATION.

### Important !

I remind you that the installation process of this pack both relates to a UP2.01 or a SAS modactivator modded game, so to make you understand how mods work in IL2, here is a small explanation:

UP2.01 is with HSFX the first pack mod partly compiled in SFS, which is the game's native compression format, the other part is found in the Files and MODS folders of the installation.

How does all this work? Very simple:

When you launch your modded IL2, mods are “integrated” to the game thanks to a “wrapper.dll” or a modified exe that will use **alphabetical order** to read them (and then integrate them) first in **MODS**, then in **Files** and in the case of UP in the **SFS** that compose it, and are placed at the root of the game and read in **last position**.

Since this pack of aircraft, that you all have been expecting so impatiently, now is for the most part also compiled in SFS thanks to II/Jg51\_Lutz, you will understand that if you have other Fw190 and Ta152 related mods in your MODS folder, there is a big risk that they will conflict, especially with the “buttons” and java classes that will be copied during installation, and also the JsGME options that once activated will also directly go in MODS.

**This is the reason why you must first delete or deactivate from your MODS folder all mods related to Fw 190s et Ta 152s like the following (non exhaustive list):**

- [Open Canopies for stock 190's](#) (Included)
- [All Fw 190 Wire Antennas](#) (Included since I made them all)
- [Revi C12 for FW 190 A1, 2, 3, 4, 5, 6](#) (Included)
- [Ta 152 H1 Barout/POV/ASH/Open Canopy](#) (Included)
- [Fw 190 Bar-Out mod by Fucida](#) (Included)
- [Ta 152 C-1 Barout/POV/ASH/Reticle](#) (Included)
- [DB603 Doras](#) (Included)
- [Fw 190D9 Early](#) (Included)
- [Fw 190 A2 & A3 ~ Uncut](#) (Included)
- [Fw 190 Cutouts from UP2.0 CompleteV3](#) (Included)
- [Fw 190 D-9 Late ~ New Tail](#) (Included)
- [Fw 190D-9 Early V2](#) (Included)
- [Fw190 D-11 & D-13 ~ SAS Updated Versions v2](#) (Included)
- [Fw190D-9 Orig slots from UP2.01 cut out](#) (Included)
- [FW-190D9 /R5 jabo.](#) (Included)
- [Fw190 A-5 U14 Torpedo Bomber v4](#) (Included)
- [Fw190 A-7s](#) (Included)
- [Ta-152 H1 with drop tank](#) (Included)
- [FW-190 F and G series](#) (Included)
- [Ta-152H-1 gyro-gunsight / guns mod](#) (Included as a JsGME option to ensure compatibility with Twister's Ta 152 H-1 Mistel, weapons fitted to the Ta 152 H-0)



- [FW-190A/F weapon mod \(X4/X7, torpedoes, droptanks\), misc.fixes, AI fix for X4/X7](#) (Incompatible)
- [Ta-152C-3](#) (Mod from Twister not tested)
- [Ta-152C gyro-gunsight / weapon / AI mod](#) (Partly included, the rest is incompatible)
- [Better Wheels combined](#) (only delete from the mod 3do\Plane\Fw-190#-# et Ta-152# type folders)
- [New 3D for Luftwaffe pilots V1.1](#) (only delete from the mod 3do\Plane\Fw-190#-# et Ta-152# type folders)

Phew! Yes all that, but may be I forgot a few of them so ...be careful!  
You know your install better than I do.

Once this is done and in order to be able to revert back to a working install I advise you to back up the following:

- 1) The **files.sfs** at the root of the game.
- 2) The **buttons** file that may be found in Files\gui\game or in MODS\STD gui\game.
- 3) The fichier **.rc** file that you will find in the Files folder, only for a UP.201 install.
- 4) The **weapons\_ru.properties** that may be found in Files\i18n or in MODS\STD gui\game.
- 5) The **plane\_ru.properties** that may be found in Files\i18n or in MODS\STD gui\game.
- 6) The **air.ini** that may be found in Files\com\maddox\il2\objects or in MODS\STD\com\maddox\il2\objects.
- 7) The **stationary.ini** that may be found in Files\com\maddox\il2\objects or in MODS\STD\com\maddox\il2\objects.
- 8) The **technics.ini** that may be found in Files\com\maddox\il2\objects or in MODS\STD\com\maddox\il2\objects.

### That was the preparation stage, here comes the installation one

Like I just wrote, and that is never repeated enough, deactivate all JsGME options, and then provided you already made all the necessary back ups, unzip the archive directly at the root of the game.

If you are unsure of what you are doing you can also unzip it in a temporary folder, this will allow you to copy/paste the files and folders one by one from the temp folder without making any mistake.

Watch out, upon extraction or while copying files, you will be asked if you want to replace files bearing the same name in **Files**, click on **YES** if you want the new 100% + throttle and/or MW50 engaged smoke, or **NO** if you prefer stock smoke, it's up to you.

Same with the samples folder if you use UP2.01 native sound mod, or with preset\sounds and Samples if you use Tiger\_33's Ultimate Sound Mod.

(Be careful, if you activate it through JsGME, you will first have to deactivate it, and then go to jsgmemods\UV2 folder to add the .prs and .wav files)

### Buttons

Regarding the famous " buttons " two options can be considered, whether you use UP2.01 native sound mod, or the [Ultimate Sound Mod by Tiger\\_33](#).

- ⇒ Those who use the sound mod that comes with UP2.01 will ALWAYS take SAS latest buttons available => [HERE](#)

⇒ Those who use the [Ultimate Sound Mod by Tiger\\_33](#). ALWAYS take the latest C6 buttons  
⇒ [HERE](#)

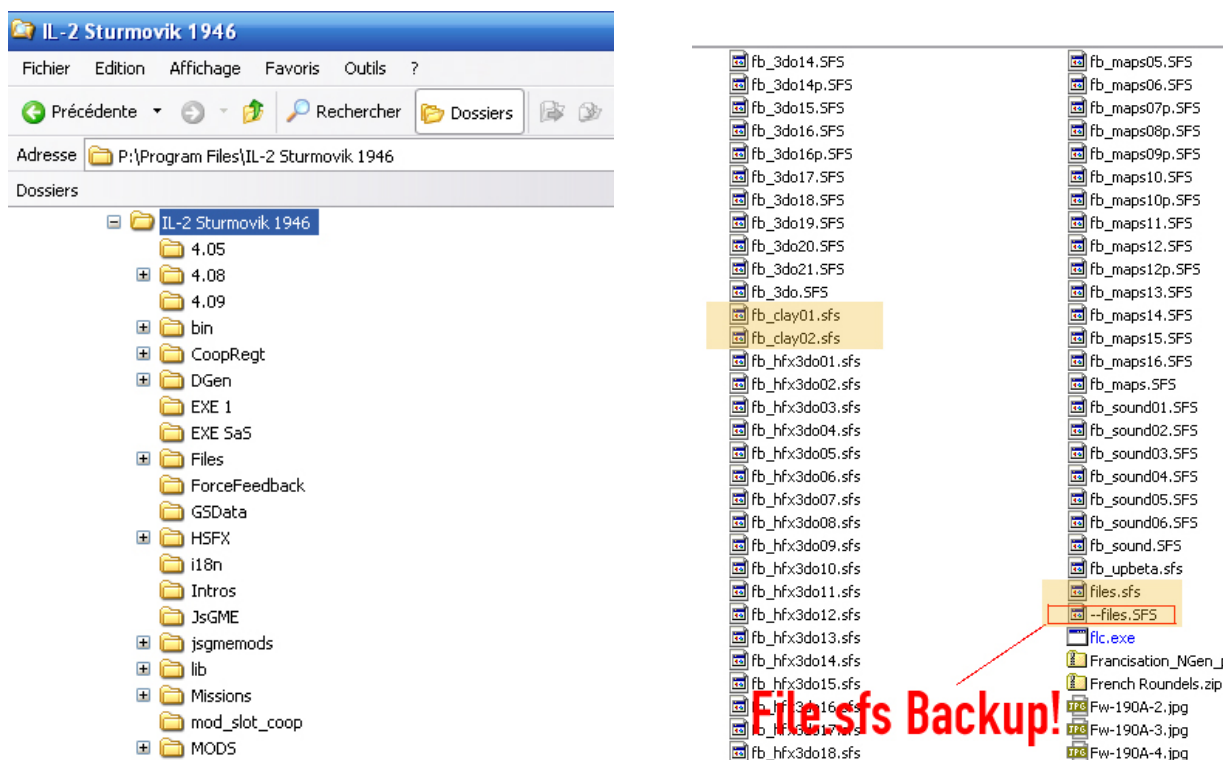
A big thank you to Blackstaff at C6 or Epervier at SAS, who keeps updating them both.

## Copying folders and files:

In order to allow you to check that everything is in the right place, if you chose the “I unzip it all directly” option, and also help those who chose the manual option, here is where the necessary folders and files of the pack go:

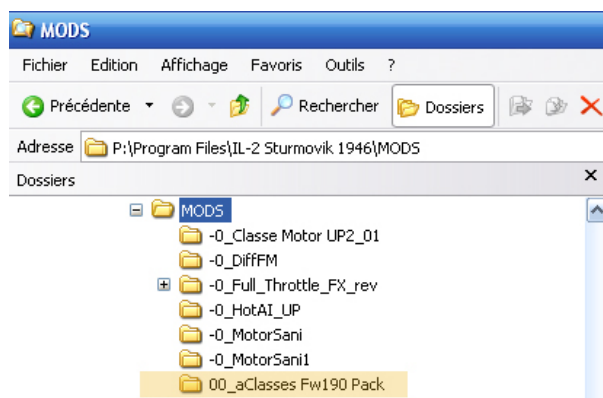
1) At the root of your installation (screens taken from my UP2.01 install)

⇒ Fb\_clay01.sfs and fb\_clay02.sfs



2) Inside MODS:

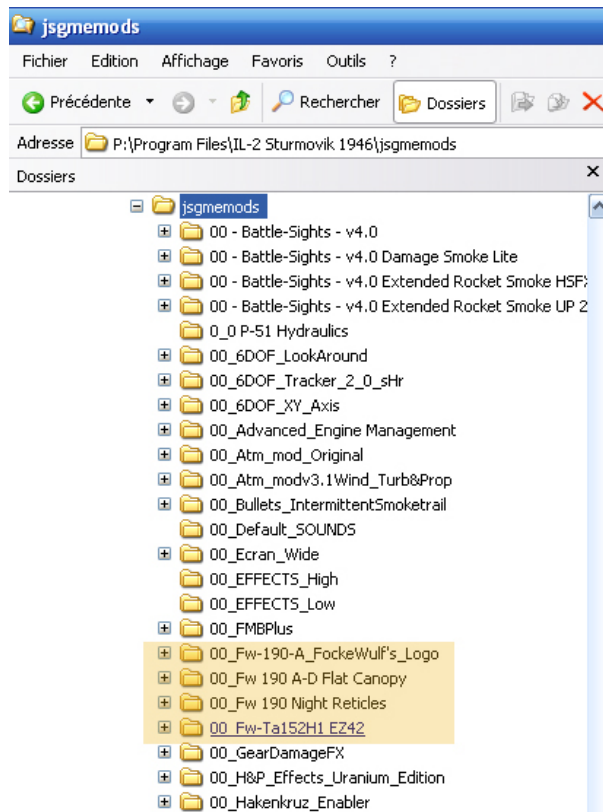
⇒ 00\_aClasses Fw190 Pack





### 3) Inside jsgmemods:

- ⇒ 00\_Fw-190-A\_FockeWulf's\_Logo,
- ⇒ 00\_Fw 190 A-D Flat Canopy
- ⇒ 00\_Fw 190 Night Reticles
- ⇒ 00\_Fw-Ta152H1 EZ42



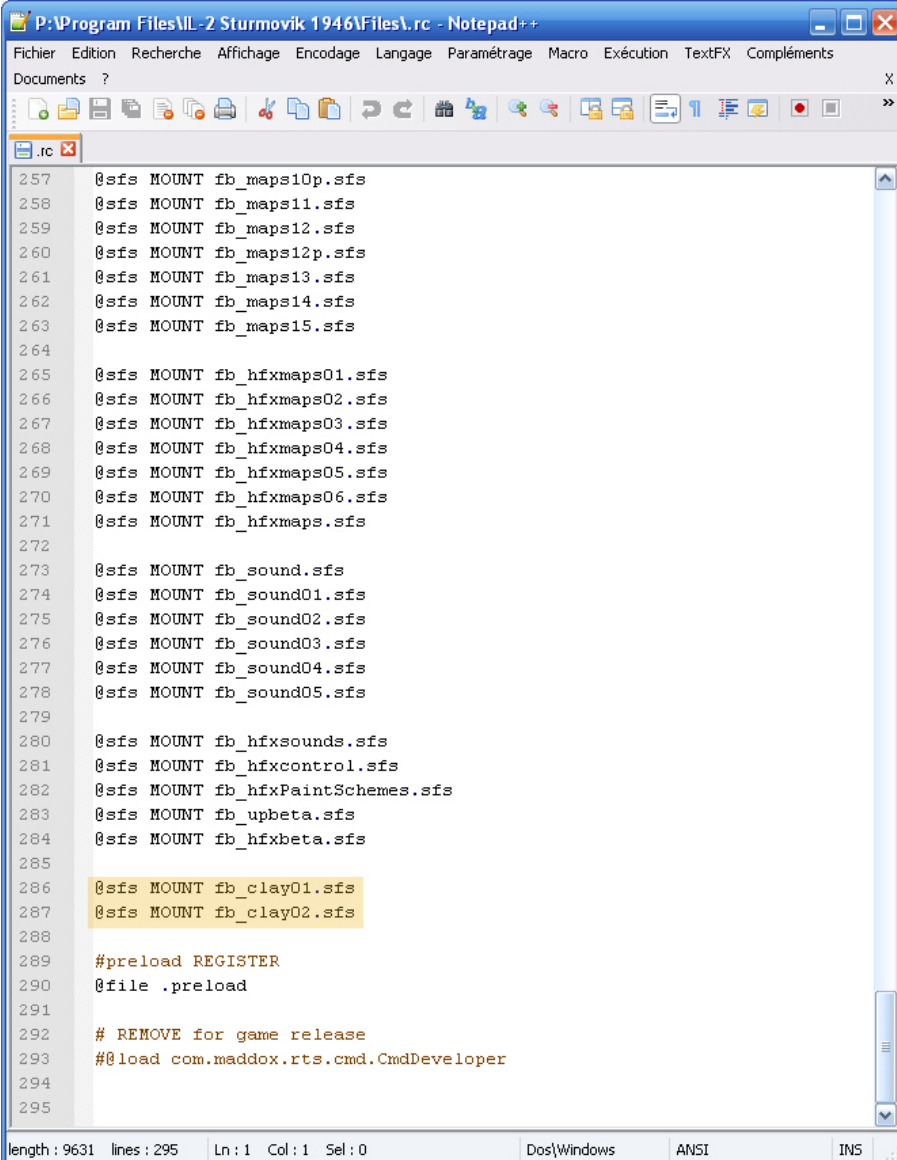
## Activating the pack

1) In case of an SAS modactivator install, you only have to replace your stock files.sfs by the one provided with the pack (that's the reason why you first have to back up your files.sfs ...)

2) But in order to activate fb\_clay01.sfs and fb\_clay02.sfs in your UP2.01 you need to “declare” them in the “.rc” file

- ⇒ @sfs MOUNT fb\_clay01.sfs
- ⇒ @sfs MOUNT fb\_clay02.sfs

Like that :



The screenshot shows a Notepad++ window titled "P:\Program Files\IL-2 Sturmovik 1946\Files\rc - Notepad++". The menu bar includes "Fichier", "Edition", "Recherche", "Affichage", "Encodage", "Langage", "Paramétrage", "Macro", "Exécution", "TextFX", and "Compléments". The toolbar contains various icons for file operations and editing. The main text area displays a list of mount commands for a .rc file, with line numbers 257 through 295 on the left. The commands are as follows:

```
257 @sfs MOUNT fb_maps10p.sfs
258 @sfs MOUNT fb_maps11.sfs
259 @sfs MOUNT fb_maps12.sfs
260 @sfs MOUNT fb_maps12p.sfs
261 @sfs MOUNT fb_maps13.sfs
262 @sfs MOUNT fb_maps14.sfs
263 @sfs MOUNT fb_maps15.sfs
264
265 @sfs MOUNT fb_hfxmaps01.sfs
266 @sfs MOUNT fb_hfxmaps02.sfs
267 @sfs MOUNT fb_hfxmaps03.sfs
268 @sfs MOUNT fb_hfxmaps04.sfs
269 @sfs MOUNT fb_hfxmaps05.sfs
270 @sfs MOUNT fb_hfxmaps06.sfs
271 @sfs MOUNT fb_hfxmaps.sfs
272
273 @sfs MOUNT fb_sound.sfs
274 @sfs MOUNT fb_sound01.sfs
275 @sfs MOUNT fb_sound02.sfs
276 @sfs MOUNT fb_sound03.sfs
277 @sfs MOUNT fb_sound04.sfs
278 @sfs MOUNT fb_sound05.sfs
279
280 @sfs MOUNT fb_hfxsounds.sfs
281 @sfs MOUNT fb_hfxcontrol.sfs
282 @sfs MOUNT fb_hfxPaintSchemes.sfs
283 @sfs MOUNT fb_upbeta.sfs
284 @sfs MOUNT fb_hfxbeta.sfs
285
286 @sfs MOUNT fb_clay01.sfs
287 @sfs MOUNT fb_clay02.sfs
288
289 #preload REGISTER
290 @file .preload
291
292 # REMOVE for game release
293 #@load com.maddox.rts.cmd.CmdDeveloper
294
295
```

The status bar at the bottom indicates "length : 9631 lines : 295", "Ln : 1 Col : 1 Sel : 0", and the encoding is "ANSI".

3) Activating the engine smoke when you are flying full throttle and/or with MW50 engaged.

You only need to edit your conf.ini (at the root of the game) and add the following line at the end, in the **[mods]** section :

⇒ SmokeEffect = 1 (1 enabled, 0 disabled)

You are nearly finished now, you only need to edit the [air.ini](#), the [weapons\\_ru.properties](#), the [stationary.ini](#) and the [technics.ini](#) like you now are accustomed to do, to add all the necessary lines needed to activate the planes from the pack. Be careful, you might already have some of them, but you will have to replace them all in order to avoid duplicates and more than that, crashes, when loading missions.

## Air.ini

Fw-190A-2	air.FW_190A2 2		g01	SUMMER
Fw-190A-3	air.FW_190A3 2		g01	SUMMER
Fw-190A-3Sani	air.FW_190A3SANI 2	NOIFNO	g01	SUMMER
Fw-190A-3Sani1	air.FW_190A3SANI1 2	NOIFNO	g01	SUMMER
Fw-190A-4	air.FW_190A4 2		g01	SUMMER
FW-190A-4_1.42ATA	air.FW_190A4142ATA 2		g01	SUMMER
Fw-190A-5	air.FW_190A5 2		g01	SUMMER
FW-190A-5_1.42ATA	air.FW_190A5142ATA 2		g01	SUMMER
FW-190A-5_1.58ATA	air.FW_190A5158ATA 2		g01	SUMMER
Fw-190A-5165ATA	air.FW_190A5165ATA 2	NOINFO	g01	SUMMER
Fw-190A-5U14	air.FW_190A5U14 2	NOINFO	g01	SUMMER
FW-190A-6orig	air.FW_190A6RLP 2		g01	SUMMER
Fw-190A-6	air.FW_190A6 2	NOINFO	g01	SUMMER
FW-190A-6R8	air.FW_190A6LULU 2		g01	SUMMER
Fw-190A-7	air.FW_190A7 2	NOINFO	g01	SUMMER
Fw-190A-7STURM	air.FW_190A7STURM 2	NOINFO	g01	SUMMER
Fw-190A-8	air.FW_190A8 2		g01	SUMMER
FW-190A-8_1.65ATA	air.FW_190A8165ATA 2		g01	SUMMER
Fw-190A-8R11	air.FW_190A8R11 2		g01	SUMMER
Fw-190A-8Mistel	air.FW_190A8MSTL 2	NOINFO	g01	SUMMER
Fw-190A-9	air.FW_190A9 2		g01	SUMMER
FW-190A-9_1.65ATA	air.FW_190A9165ATA 2		g01	SUMMER
FW_190D9orig	air.FW_190D9RLP 2		g01	SUMMER
FW190D9early	air.FW190D9early 2	NOINFO	g01	SUMMER
Fw-190D-9	air.FW_190D9 2		g01	SUMMER
FW190D9R5	air.FW190D9r5 2	NOINFO	g01	SUMMER
FW_190D-9L_orig	air.FW_190D92 2		g01	SUMMER
Fw-190D-9_Late	air.FW_190D9LATE 2	NOINFO	g01	SUMMER
Fw-190D-11	air.FW_190D11 2	NOINFO	g01	SUMMER
Fw-190D-13	air.FW_190D13 2	NOINFO	g01	SUMMER
Fw-190D-14	air.FW_190D14 2	NOINFO	g01	SUMMER
Fw-190D-14Proto	air.FW_190D14Proto 2	NOINFO	g01	SUMMER
Fw-190D-15	air.FW_190D15 2	NOINFO	g01	SUMMER
Fw-190F-1	air.FW_190F1 2		g01	SUMMER
Fw-190F-2	air.FW_190F2 2		g01	SUMMER
Fw-190F-2Trop	air.FW_190F2_Trop 2		g01	SUMMER
Fw-190F-3	air.FW_190F3 2		g01	SUMMER
Fw-190F-8	air.FW_190F8 2		g01	SUMMER
Fw-190F-8/PB	air.FW_190F8PB 2		g01	SUMMER
Fw-190F-8_Late	air.FW_190F8LATE 2		g01	SUMMER
Fw-190F-8U1	air.FW_190F8U1 2		g01	SUMMER
Fw-190F-9	air.FW_190F9 2		g01	SUMMER
Fw-190F-9/PB	air.FW_190F9PB 2		g01	SUMMER
Fw-190G-1	air.FW_190G1 2		g01	SUMMER
Fw-190G-2	air.FW_190G2 2		g01	SUMMER
Fw-190G-3	air.FW_190G3 2		g01	SUMMER
Fw-190G-8	air.FW_190G8 2		g01	SUMMER
Ta-152B	air.TA_152B 2	NOINFO	g01	SUMMER
Ta-152C	air.TA_152C 2	NOINFO	g01	SUMMER
Ta-152C0	air.TA_152C0 2	NOINFO	g01	SUMMER
Ta-152C1	air.TA_152C1 2	NOINFO	g01	SUMMER
Ta-152C3	air.TA_152C3 2	NOINFO	g01	SUMMER
Ta-152H-0	air.TA_152H 2		g01	SUMMER
Ta-152H-1	air.TA_152H1 2		g01	SUMMER

=====



## Weapons\_ru.properties

```
#####
# Fw-190A-2
#####
Fw-190A-2.default          default
Fw-190A-2.u1              U1 : (2xMG17 + 2xMG151/20)
Fw-190A-2.u3              U3 : U1 +Droptank + recce photo pod
Fw-190A-2.None            Empty

#####
# Fw-190A-3
#####
Fw-190A-3.default          default
Fw-190A-3.u1              U1: (2xMG151/20)
Fw-190A-3.u11sc250        U1: + 1xSC-250
Fw-190A-3.u11ab250        U1: + 1xAB-250
Fw-190A-3.u3              U3: (2xMG17 + 2xMG151/20)
Fw-190A-3.u31sc250        U3: + 1xSC-250
Fw-190A-3.u31ab250        U3: + 1xAB-250
Fw-190A-3.u31sc500        U3: + 1xSC-500
Fw-190A-3.u31ab500        U3: + 1xAB-500
Fw-190A-3.u31tank         U3: + 1xDroptank
Fw-190A-3.u41tank         U3: +Droptank + recce photo pod
Fw-190A-3.None            Empty

#####
# Fw-190A-3 (Sani)
#####
Fw-190A-3Sani.default      default
Fw-190A-3Sani.u1          U1: (2xMG151/20)
Fw-190A-3Sani.u11sc250    U1: + 1xSC-250
Fw-190A-3Sani.u11ab250    U1: + 1xAB-250
Fw-190A-3Sani.u3          U3: (2xMG17 + 2xMG151/20)
Fw-190A-3Sani.u31sc250    U3: + 1xSC-250
Fw-190A-3Sani.u31ab250    U3: + 1xAB-250
Fw-190A-3Sani.u31sc500    U3: + 1xSC-500
Fw-190A-3Sani.u31ab500    U3: + 1xAB-500
Fw-190A-3Sani.u31tank     U3: + 1xDroptank
Fw-190A-3Sani.u41tank     U3: + Droptank + recce photo pod
Fw-190A-3Sani.None        Empty

#####
# Fw-190A-3 (Sani1)
#####
Fw-190A-3Sani1.default    default
Fw-190A-3Sani1.u1         U1: (2xMG151/20)
Fw-190A-3Sani1.u11sc250   U1: + 1xSC-250
Fw-190A-3Sani1.u11ab250   U1: + 1xAB-250
Fw-190A-3Sani1.u3         U3: (2xMG17 + 2xMG151/20)
Fw-190A-3Sani1.u31sc250   U3: + 1xSC-250
Fw-190A-3Sani1.u31ab250   U3: + 1xAB-250
Fw-190A-3Sani1.u31sc500   U3: + 1xSC-500
Fw-190A-3Sani1.u31ab500   U3: + 1xAB-500
Fw-190A-3Sani1.u31tank    U3: + 1xDroptank
Fw-190A-3Sani1.u41tank    U3: +Droptank + recce photo pod
Fw-190A-3Sani1.None       Empty

#####
# Fw-190A-4
#####
Fw-190A-4.default          default
Fw-190A-4.u1              U1: (2xMG151/20)
Fw-190A-4.u11sc250        U1: + 1xSC-250
Fw-190A-4.u11ab250        U1: + 1xAB-250
Fw-190A-4.u31sc250        U3: + 1xSC-250
Fw-190A-4.u31ab250        U3: + 1xAB-250
```

Fw-190A-4.u31sc500	U3: + 1xSC-500
Fw-190A-4.u31ab500	U3: + 1xAB-500
Fw-190A-4.u31tank	U3: + 1xDroptank
Fw-190A-4.u82tank	U8: + 2xDroptanks
Fw-190A-4.u81sc2502tank	U8: + 2xDroptanks + 1xSC-250
Fw-190A-4.u81sc5002tank	U8: + 2xDroptanks + 1xSC-500
Fw-190A-4.r1tank300	R1: + 1xDroptank
Fw-190A-4.r1sc500	R1: + 1xSC-500
Fw-190A-4.r6wfrgr21	R6: + 2xWfr.Gr.21
Fw-190A-4.none	Empty

#####

# FW-190A-4 1.42ATA

#####

FW-190A-4_1.42ATA.Default	default
FW-190A-4_1.42ATA.u1	U1: 2x MG151/20 Only
FW-190A-4_1.42ATA.u11sc250	U1: + 1xSC-250
FW-190A-4_1.42ATA.u11ab250	U1: + 1xAB-250
FW-190A-4_1.42ATA.u31sc250	U3: + 1xSC-250
FW-190A-4_1.42ATA.u31ab250	U3: + 1xAB-250
FW-190A-4_1.42ATA.u31sc500	U3: + 1xSC-500
FW-190A-4_1.42ATA.u31ab500	U3: + 1xAB-500
FW-190A-4_1.42ATA.u31tank	U3: + 1xDroptank
FW-190A-4_1.42ATA.u82tank	U8: + 2xDroptanks
FW-190A-4_1.42ATA.u81sc2502tank	U8: + 2xDroptanks + 1xSC-250
FW-190A-4_1.42ATA.u81sc5002tank	U8: + 2xDroptanks + 1xSC-500
FW-190A-4_1.42ATA.r1tank300	R1: + 1xDroptank
FW-190A-4_1.42ATA.r1sc500	R1: + 1xSC-500
FW-190A-4_1.42ATA.r6wfrgr21	R6: + 2xWfr.Gr.21
FW-190A-4_1.42ATA.None	Empty

#####

# Fw-190A-5

#####

Fw-190A-5.default	default
Fw-190A-5.u22tank	U2: + 2xDroptanks
Fw-190A-5.u21sc2502tank	U2: + 2xDroptanks + 1xSC-250
Fw-190A-5.u3	U3: (2xMG17 + 2xMG151/20)
Fw-190A-5.u31sc250	U3: + 1xSC-250
Fw-190A-5.u31ab250	U3: + 1xAB-250
Fw-190A-5.u31sc500	U3: + 1xSC-500
Fw-190A-5.u31ab500	U3: + 1xAB-500
Fw-190A-5.u31sc2504sc50	U3: + 1xSC-250 + 4xSC-50
Fw-190A-5.u31ab2504sc50	U3: + 1xAB-250 + 4xSC-50
Fw-190A-5.u82tank	U8: + 2xDroptanks
Fw-190A-5.u81sc5002tank	U8: + 2xDroptanks + 1xSC-500
Fw-190A-5.u81ab5002tank	U8: + 2xDroptanks + 1xAB-500
Fw-190A-5.u171sc5004sc50	U17: + 1xSC-500 + 4xSC-50
Fw-190A-5.r11tank	R1: + 1xDroptank
Fw-190A-5.r11sc500	R1: + 1xSC-500
Fw-190A-5.r11ab500	R1: + 1xAB-500
Fw-190A-5.r6wfrgr21	R6: + 2xWfr.Gr.21
Fw-190A-5.None	Empty

#####

# FW-190A-5 1.42ATA

#####

FW-190A-5_1.42ATA.Default	default
FW-190A-5_1.42ATA.u22tank	U2: + 2xDroptanks
FW-190A-5_1.42ATA.u21sc2502tank	U2: + 2xDroptanks + 1xSC-250
FW-190A-5_1.42ATA.u3	U3: (2xMG17 + 2xMG151/20)
FW-190A-5_1.42ATA.u31sc250	U3: + 1xSC-250
FW-190A-5_1.42ATA.u31ab250	U3: + 1xAB-250
FW-190A-5_1.42ATA.u31sc500	U3: + 1xSC-500
FW-190A-5_1.42ATA.u31ab500	U3: + 1xAB-500
FW-190A-5_1.42ATA.u31sc2504sc50	U3: + 1xSC-250 + 4xSC-50
FW-190A-5_1.42ATA.u31ab2504sc50	U3: + 1xAB-250 + 4xSC-50
FW-190A-5_1.42ATA.u82tank	U8: + 2xDroptanks
FW-190A-5_1.42ATA.u81sc5002tank	U8: + 2xDroptanks + 1xSC-500
FW-190A-5_1.42ATA.u81ab5002tank	U8: + 2xDroptanks + 1xAB-500

FW-190A-5_1.42ATA.u171sc5004sc50	U17: + 1xSC-500 + 4xSC-50
FW-190A-5_1.42ATA.r11tank	R1: + 1xDroptank
FW-190A-5_1.42ATA.r11sc500	R1: + 1xSC-500
FW-190A-5_1.42ATA.r11ab500	R1: + 1xAB-500
FW-190A-5_1.42ATA.r6wfrgr21	R6: +2xWfr.Gr.21
FW-190A-5_1.42ATA.None	Empty

#####

# FW-190A-5 1.58ATA

#####

FW-190A-5_1.58ATA.Default	default
FW-190A-5_1.58ATA.u22tank	U2: + 2xDroptanks
FW-190A-5_1.58ATA.u21sc2502tank	U2: + 2xDroptanks + 1xSC-250
FW-190A-5_1.58ATA.u3	U3: (2xMG17 + 2xMG151/20)
FW-190A-5_1.58ATA.u31sc250	U3: + 1xSC-250
FW-190A-5_1.58ATA.u31ab250	U3: + 1xAB-250
FW-190A-5_1.58ATA.u31sc500	U3: + 1xSC-500
FW-190A-5_1.58ATA.u31ab500	U3: + 1xAB-500
FW-190A-5_1.58ATA.u31sc2504sc50	U3: + 1xSC-250 + 4xSC-50
FW-190A-5_1.58ATA.u31ab2504sc50	U3: + 1xAB-250 + 4xSC-50
FW-190A-5_1.58ATA.u82tank	U8: + 2xDroptanks
FW-190A-5_1.58ATA.u81sc5002tank	U8: + 2xDroptanks + 1xSC-500
FW-190A-5_1.58ATA.u81ab5002tank	U8: + 2xDroptanks + 1xAB-500
FW-190A-5_1.58ATA.u171sc5004sc50	U17: + 1xSC-500 + 4xSC-50
FW-190A-5_1.58ATA.r11tank	R1: + 1xDroptank
FW-190A-5_1.58ATA.r11sc500	R1: + 1xSC-500
FW-190A-5_1.58ATA.r11ab500	R1: + 1xAB-500
FW-190A-5_1.58ATA.r6wfrgr21	R6: + 2xWfr.Gr.21
FW-190A-5_1.58ATA.None	Empty

#####

# Fw-190A-5 1.65ATA

#####

Fw-190A-5165ATA.default	default
Fw-190A-5165ATA.u22tank	U2: + 2xDroptanks
Fw-190A-5165ATA.u21sc2502tank	U2: + 2xDroptanks + 1xSC-250
Fw-190A-5165ATA.u3	U3: (2xMG17 + 2xMG151/20)
Fw-190A-5165ATA.u31sc250	U3: + 1xSC-250
Fw-190A-5165ATA.u31ab250	U3: + 1xAB-250
Fw-190A-5165ATA.u31sc500	U3: + 1xSC-500
Fw-190A-5165ATA.u31ab500	U3: + 1xAB-500
Fw-190A-5165ATA.u31sc2504sc50	U3: + 1xSC-250 + 4xSC-50
Fw-190A-5165ATA.u31ab2504sc50	U3: + 1xAB-250 + 4xSC-50
Fw-190A-5165ATA.u82tank	U8: + 2xDroptanks
Fw-190A-5165ATA.u81sc5002tank	U8: + 2xDroptanks + 1xSC-500
Fw-190A-5165ATA.u81ab5002tank	U8: + 2xDroptanks + 1xAB-500
Fw-190A-5165ATA.u171sc5004sc50	U17: + 1xSC-500 + 4xSC-50
Fw-190A-5165ATA.r11tank	R1: + 1xDroptank
Fw-190A-5165ATA.r11sc500	R1: + 1xSC-500
Fw-190A-5165ATA.r11ab500	R1: + 1xAB-500
Fw-190A-5165ATA.r6wfrgr21	R6: + 2xWfr.Gr.21
Fw-190A-5165ATA.none	Empty

#####

# Fw-190A-5U14

#####

Fw-190A-5U14.Default	default
Fw-190A-5U14.heavy	Complete (2xMG17 + 2xMG151/20 + 2xMGFF)
Fw-190A-5U14.PTB	default+ 2xDroptanks
Fw-190A-5U14.Torp	Complete + 1xTorpedo
Fw-190A-5U14.Lite_Torp	default + 1xTorpedo
Fw-190A-5U14.Torp_PTB	default + 2xDroptanks + 1xTorpedo
Fw-190A-5U14.none	Empty

#####

# FW-190A-6orig

#####

FW-190A-6orig.Default	default
FW-190A-6orig.u22tank	U2: + 2xDroptanks
FW-190A-6orig.u21sc2502tank	U2: + 2xDroptanks + 1xSC-250



FW-190A-6orig.u3	U3: (2xMG17 + 2xMG151/20)
FW-190A-6orig.u31sc250	U3: + 1xSC-250
FW-190A-6orig.u31ab250	U3: + 1xAB-250
FW-190A-6orig.u31sc500	U3: + 1xSC-500
FW-190A-6orig.u31ab500	U3: + 1xAB-500
FW-190A-6orig.u31sc2504sc50	U3: + 1xSC-250 + 4xSC-50
FW-190A-6orig.u31ab2504sc50	U3: + 1xAB-250 + 4xSC-50
FW-190A-6orig.u82tank	U8: + 2xDroptanks
FW-190A-6orig.u81sc5002tank	U8: + 2xDroptanks + 1xSC-500
FW-190A-6orig.u81ab5002tank	U8: + 2xDroptanks + 1xAB-500
FW-190A-6orig.u171sc5004sc50	U17: + 1xSC-500 + 4xSC-50
FW-190A-6orig.r11tank	R1: + 1xDroptank
FW-190A-6orig.r11sc500	R1: + 1xSC-500
FW-190A-6orig.r11ab500	R1: + 1xAB-500
FW-190A-6orig.r6wfrgr21	R6: + 2xWfr.Gr.21
FW-190A-6orig.None	Empty

#####

# Fw-190A-6

#####

Fw-190A-6.Default	default
Fw-190A-6.u22tank	U2: + 2xDroptanks
Fw-190A-6.u21sc2502tank	U2: + 2xDroptanks + 1xSC-250
Fw-190A-6.u3	U3: (2xMG17 + 2xMG151/20)
Fw-190A-6.u31sc250	U3: + 1xSC-250
Fw-190A-6.u31ab250	U3: + 1xAB-250
Fw-190A-6.u31sc500	U3: + 1xSC-500
Fw-190A-6.u31ab500	U3: + 1xAB-500
Fw-190A-6.u31sc2504sc50	U3: + 1xSC-250 + 4xSC-50
Fw-190A-6.u31ab2504sc50	U3: + 1xAB-250 + 4xSC-50
Fw-190A-6.u82tank	U8: + 2xDroptanks
Fw-190A-6.u81sc5002tank	U8: + 2xDroptanks + 1xSC-500
Fw-190A-6.u81ab5002tank	U8: + 2xDroptanks + 1xAB-500
Fw-190A-6.u171sc5004sc50	U17: + 1xSC-500 + 4xSC-50
Fw-190A-6.r11tank	R1: + 1xDroptank
Fw-190A-6.r11sc500	R1: + 1xSC-500
Fw-190A-6.r11ab500	R1: + 1xAB-500
Fw-190A-6.r6wfrgr21	R6: + 2xWfr.Gr.21
Fw-190A-6.none	Empty

#####

# Fw-190A-6/R8 LULU

#####

FW-190A-6R8.default	default
FW-190A-6R8.u3	U3: (2xMG17 + 2xMG151/20)
FW-190A-6R8.u82tank	U8: + 2xDroptanks
FW-190A-6R8.r11tank	R1: + 1xDroptank
FW-190A-6R8.r6wfrgr21	R6: + 2xWfr.Gr.21
FW-190A-6R8.mk108	(2xMG17 + 2xMG151/20) + 2xMK108
FW-190A-6R8.None	Empty

#####

# Fw-190A-7

#####

Fw-190A-7.default	default
Fw-190A-7.bidon	R1: + 1xDroptank
Fw-190A-7.allege	U3: (2xMG131 + 2xMG151/20)
Fw-190A-7.allege+bidon	U3: + 1xDroptank
Fw-190A-7.R2	R2: + 2xMk108
Fw-190A-7.R2+bidon	R2: + 2xMk108 + 1xDroptank
Fw-190A-7.R6	R6: + 2xWfr.Gr.21
Fw-190A-7.R6+bidon	R6: + 2xWfr.Gr.21 + 1xDroptank
Fw-190A-7.none	Empty

#####

# Fw-190A-7 Sturm

#####

Fw-190A-7STURM.default	default
Fw-190A-7STURM.bidon	R1: + 1xDroptank
Fw-190A-7STURM.R2	R2: + 2xMk108

Fw-190A-7STURM.R2+bidon	R2: + 2xMk108 + 1xDroptank
Fw-190A-7STURM.R6	R6: + 2xWfr.Gr.21
Fw-190A-7STURM.R6+bidon	R6: + 2xWfr.Gr.21 + 1xDroptank
Fw-190A-7STURM.R2+R6	R2+R6: + 2xMk108 + 2xWfr.Gr.21
Fw-190A-7STURM.R2+R6+bidon	R2+R6+Dt: + 2xMk108 + 2xWfr.Gr.21 + 1xDroptank
Fw-190A-7STURM.none	Empty

#####

# Fw-190A-8

#####

Fw-190A-8.default	default
Fw-190A-8.lsc500	+ 1xSC-500
Fw-190A-8.r14mg15120	R1: + 2xMG151/20 Pods
Fw-190A-8.r22mk108	R2: + 2xMk108
Fw-190A-8.r32mk103	R3: + 2xMk103 Pods
Fw-190A-8.r62wfrgr21	R6: + 2xWfr.Gr.21
Fw-190A-8.None	Empty

#####

# FW-190A-8\_1.65ATA

#####

FW-190A-8_1.65ATA.Default	default
FW-190A-8_1.65ATA.lsc500	+ 1xSC-500
FW-190A-8_1.65ATA.r14mg15120	R1: + 2xMG151/20 Pods
FW-190A-8_1.65ATA.r22mk108	R2: + 2xMk108
FW-190A-8_1.65ATA.r32mk103	R3: + 2xMk103 Pods
FW-190A-8_1.65ATA.r62wfrgr21	R6: + 2xWfr.Gr.21
FW-190A-8_1.65ATA.None	Empty

#####

# Fw-190A-8 Mistel

#####

Fw-190A-8Mistel.default	default
Fw-190A-8Mistel.none	Empty

#####

# FW-190A-8/R11

#####

Fw-190A-8R11.4MG151	default
Fw-190A-8R11.4MG151+Bidon	+ 1xDroptank
Fw-190A-8R11.2MG151+2MK108	R2: + 2xMk108
Fw-190A-8R11.2MG151+2MK108+Bidon	R2: + 2xMk108 + 1xDroptank
Fw-190A-8R11.None	Empty

#####

# Fw-190A-9

#####

Fw-190A-9.default	default
Fw-190A-9.lsc500	+ 1xSC-500
Fw-190A-9.r14mg15120	R1: + 2xMG151/20 Pods
Fw-190A-9.r22mk108	R2: + 2xMk108
Fw-190A-9.r32mk103	R3: + 2xMk103 Pods
Fw-190A-9.r62wfrgr21	R6: + 2xWfr.Gr.21
Fw-190A-9.None	Empty

#####

# FW-190A-9 1.65ATA

#####

FW-190A-9_1.65ATA.Default	default
FW-190A-9_1.65ATA.lsc500	+ 1xSC-500
FW-190A-9_1.65ATA.r14mg15120	R1: + 2xMG151/20 Pods
FW-190A-9_1.65ATA.r22mk108	R2: + 2xMk108
FW-190A-9_1.65ATA.r32mk103	R3: + 2xMk103 Pods
FW-190A-9_1.65ATA.r62wfrgr21	R6: + 2xWfr.Gr.21
FW-190A-9_1.65ATA.None	Empty

#####

# FW-190D-9 orig

#####

FW_190D9orig.default	default
----------------------	---------

FW\_190D9orig.none                      Empty

```
#####
# FW-190D-9 early
#####
FW190D9early.default                      default
FW190D9early.bidon                      + 1xDroptank
FW190D9early.SC250                      + 1xSC-250
FW190D9early.AB250                      + 1xAB-250
FW190D9early.SC500                      + 1xSC-500
FW190D9early.AB500                      + 1xAB-500
FW190D9early.none                      Empty
```

```
#####
# Fw-190D-9
#####
Fw-190D-9.default                      default
Fw-190D-9.none                      Empty
```

```
#####
# Fw-190D-9/R5
#####
FW190D9R5.default                      default
FW190D9R5.bidon                      + 1xDroptank
FW190D9R5.4SC70                      + 4xSC-70
FW190D9R5.4SC70+bidon                      + 4xSC-70 + 1xDroptank
FW190D9R5.2SC50+2SC70+1SC250                      + 1xSC-250 + 2xSC-70 + 2xSC-50
FW190D9R5.2SC50+2SC70+1AB250                      + 1xAB-250 + 2xSC-70 + 2xSC-50
FW190D9R5.4SC50+1AB500                      + 1xAB-500 + 4xSC-50
FW190D9R5.1SC500                      + 1xSC-500
FW190D9R5.1AB500                      + 1xAB-500
FW190D9R5.12Panzerblitz                      + 12xR4M (Panzerblitz)
FW190D9R5.12Panzerblitz+bidon                      + 12xR4M + 1xDroptank
FW190D9R5.none                      Empty
```

```
#####
# FW-190D-9 Late orig
#####
FW_190D-9L_orig.default                      Default
FW_190D-9L_orig.none                      Empty
```

```
#####
# Fw-190D-9 Late
#####
Fw-190D-9_Late.default                      default
Fw-190D-9_Late.none                      Empty
```

```
#####
# Fw-190D-11
#####
Fw-190D-11.default                      default
Fw-190D-11.2xMG151                      U1: (2xMG151/20)
Fw-190D-11.1xDroptank                      R1: + 1xDroptank
Fw-190D-11.2xMG151+1xDroptank                      U1 + R1
Fw-190D-11.none                      Empty
```

```
#####
# Fw-190D-13
#####
Fw-190D-13.default                      default
Fw-190D-13.1xSC250                      R1: + 1xSC-250
Fw-190D-13.1xSC500                      R1: + 1xSC-500
Fw-190D-13.1xSC1000                      R1: + 1xSC-1000
Fw-190D-13.1xSB1000                      R1: + 1xSB-1000
Fw-190D-13.1xPC1000RS                      R1: + 1xPC-1000RS
Fw-190D-13.1xDroptank                      R1: + 1xDroptank
Fw-190D-13.none                      Empty
```

```
#####
# FW-190D-14
```



```
#####
Fw-190D-14.Default          default
Fw-190D-14.DT              + 1xDroptank
Fw-190D-14.SC500           + 1xSC-500
Fw-190D-14.MK108            (2xMG151/20 + 1xMk108)
Fw-190D-14.MK108+DT         (2xMG151/20 + 1xMk108) + 1x Droptank
Fw-190D-14.MK108+SC500      (2xMG151/20 + 1xMk108) + 1xSC-500
Fw-190D-14.none            Empty

#####
# Fw-190D-14 Proto
#####
Fw-190D-14Proto.Default     default
Fw-190D-14Proto.DT          + 1xDroptank
Fw-190D-14Proto.SC500       + 1xSC-500
Fw-190D-14Proto.MK108       (2xMG151/20 + 1xMk108)
Fw-190D-14Proto.MK108+DT    (2xMG151/20 + 1xMk108) + 1xDroptank
Fw-190D-14Proto.MK108+SC500 (2xMG151/20 + 1xMk108) + 1xSC-500
Fw-190D-14Proto.none        Empty

#####
# FW-190D-15
#####
Fw-190D-15.Default          default
Fw-190D-15.R1-2xMG151-20    R1: (4xMG151/20)
Fw-190D-15.R1-2xMG151-20+DT R1: + 1xDroptank
Fw-190D-15.R1-2xMG151-20+1xSC500 R1: + 1xSC-500
Fw-190D-15.R1-4xMG151-20    R1: (6xMG151/20)
Fw-190D-15.R1-4xMG151-20+DT R1: + 1xDroptank
Fw-190D-15.R2-2xMK108+DT    R2: + 1xDroptank
Fw-190D-15.R2-2xMK108+1xSC500 R2: + 1xSC-500
Fw-190D-15.R3_2xMK103       R3: (2xMG151/20 + 2xMK103)
Fw-190D-15.R3_2xMK103+DT    R3: + 1xDroptank
Fw-190D-15.R3-2xMK103+1xSC500 R3: + 1xSC-500
Fw-190D-15.R6_2xWfrGr21     R6: + 2xWfr.Gr.21
Fw-190D-15.R6_2xWfrGr21+DT  R6: + 2xWfr.Gr.21 + 1xDroptank
Fw-190D-15.LightWeight      (2xMG151/20)
Fw-190D-15.none            Empty

#####
# Fw-190F-1
#####
Fw-190F-1.Default           default
Fw-190F-1.1sc250            + 1xSC-250
Fw-190F-1.1ab250            + 1xAB-250
Fw-190F-1.1sc500            + 1xSC-500
Fw-190F-1.1ab500            + 1xAB-500
Fw-190F-1.1sd500            + 1xSD-500
Fw-190F-1.4sc50             + 4xSC-50
Fw-190F-1.1tank             + 1xDroptank
Fw-190F-1.Empty             Empty

#####
# Fw-190F-2
#####
Fw-190F-2.Default           default
Fw-190F-2.1sc250            + 1xSC-250
Fw-190F-2.1ab250            + 1xAB-250
Fw-190F-2.1sc500            + 1xSC-500
Fw-190F-2.1ab500            + 1xAB-500
Fw-190F-2.1sd500            + 1xSD-500
Fw-190F-2.4sc50             + 4xSC-50
Fw-190F-2.1tank             + 1xDroptank
Fw-190F-2.Empty             Empty

#####
# Fw-190F-2 Trop
#####
Fw-190F-2Trop.default       default
Fw-190F-2Trop.1sc250       + 1xSC-250
```

Fw-190F-2Trop.1ab250	+ 1xAB-250
Fw-190F-2Trop.1sc500	+ 1xSC-500
Fw-190F-2Trop.1ab500	+ 1xAB-500
Fw-190F-2Trop.1sd500	+ 1xSD-500
Fw-190F-2Trop.4sc50	+ 4xSC-50
Fw-190F-2Trop.1tank	+ 1xDroptank
Fw-190F-2Trop.none	Empty

#####

# Fw-190F-3

#####

Fw-190F-3.Default	default
Fw-190F-3.1sc250	+ 1xSC-250
Fw-190F-3.1ab250	+ 1xAB-250
Fw-190F-3.1sc500	+ 1xSC-500
Fw-190F-3.1ab500	+ 1xAB-500
Fw-190F-3.1sd500	+ 1xSD-500
Fw-190F-3.1sc250_4sc50	+ 1xSC-250 + 4xSC-50
Fw-190F-3.1ab250_4sc50	+ 1xAB-250 + 4xSC-50
Fw-190F-3.1sc500_4sc50	+ 1xSC-500 + 4xSC-50
Fw-190F-3.1ab500_4sc50	+ 1xAB-500 + 4xSC-50
Fw-190F-3.1sd500_4sc50	+ 1xSD-500 + 4xSC-50
Fw-190F-3.8sc50	+ 8xSC-50
Fw-190F-3.4sc50_1tank	+ 4xSC-50 + 1xDroptank
Fw-190F-3.1tank	+ 1xDroptank
Fw-190F-3.Empty	Empty

#####

# Fw-190F-8

#####

Fw-190F-8.default	default
Fw-190F-8.4sc50	+ 4xSC-50
Fw-190F-8.1sc250	+ 1xSC-250
Fw-190F-8.1sc2504sc50	+ 1xSC-250 + 4xSC-50
Fw-190F-8.1ab250	+ 1xAB-250
Fw-190F-8.1sc500	+ 1xSC-500
Fw-190F-8.1sc5004sc50	+ 1xSC-500 + 4xSC-50
Fw-190F-8.1ab500	+ 1xAB-500
Fw-190F-8.1sd500	+ 1xSD-500
Fw-190F-8.None	Empty

#####

# Fw-190F-8 Late

#####

Fw-190F-8_Late.default	default
Fw-190F-8_Late.1sc250	+ 1xSC-250
Fw-190F-8_Late.1ab250	+ 1xAB-250
Fw-190F-8_Late.1sc500	+ 1xSC-500
Fw-190F-8_Late.1ab500	+ 1xAB-500
Fw-190F-8_Late.1sd500	+ 1xSD-500
Fw-190F-8_Late.1sc250_4sc50	+ 1xSC-250 + 4xSC-50
Fw-190F-8_Late.1ab250_4sc50	+ 1xAB-250 + 4xSC-50
Fw-190F-8_Late.1sc500_4sc50	+ 1xSC-500 + 4xSC-50
Fw-190F-8_Late.1ab500_4sc50	+ 1xAB-500 + 4xSC-50
Fw-190F-8_Late.1sd500_4sc50	+ 1xSD-500 + 4xSC-50
Fw-190F-8_Late.4sc50_4sc70	+ 4xSC-50 + 4xSC-70
Fw-190F-8_Late.1tank_4sc70	+ 4xSC-70 + 1xDroptank
Fw-190F-8_Late.1sc250_4sc70	+ 1xSC-250 + 4xSC-70
Fw-190F-8_Late.1ab250_4sc70	+ 1xAB-250 + 4xSC-70
Fw-190F-8_Late.1sc500_2sc50_2sc70	+ 1xSC-500 + 2xSC-50 + 2xSC-70
Fw-190F-8_Late.1ab500_2sc50_2sc70	+ 1xAB-500 + 2xSC-50 + 2xSC-70
Fw-190F-8_Late.1sd500_2sc50_2sc70	+ 1xSD-500 + 2xSC-50 + 2xSC-70
Fw-190F-8_Late.U1_2sc250	+ 2xSC-250
Fw-190F-8_Late.U1_2ab250	+ 2xAB-250
Fw-190F-8_Late.U1_2tank	+ 2xDroptanks
Fw-190F-8_Late.U1_3sc250	+ 3xSC-250
Fw-190F-8_Late.U1_2sc250_1sc500	+ 2xSC-250 + 1xSC-500
Fw-190F-8_Late.1sc1000	+ 1xSC-1000
Fw-190F-8_Late.1sc1800	+ 1xSC-1800
Fw-190F-8_Late.1tank	+ 1xDroptank

Fw-190F-8\_Late.none

Empty

#####

# Fw-190F-8/PB

#####

Fw-190F-8/PB.default	default
Fw-190F-8/PB.PB2	+ 12xRockets PB2
Fw-190F-8/PB.PB2_4sc50	+ 12xRockets PB2 + 4xSC-50
Fw-190F-8/PB.PB2_1sc250	+ 12xRockets PB2 + 1xSC-250
Fw-190F-8/PB.PB1	+ 12xRockets PB1
Fw-190F-8/PB.PB1_4sc50	+ 12xRockets PB1 + 4xSC-50
Fw-190F-8/PB.PB1_1sc250	+ 12xRockets PB1 + 1xSC-250
Fw-190F-8/PB.none	Empty

#####

# Fw-190F-8 U1

#####

Fw-190F-8U1.default	default
Fw-190F-8U1.1sc250	+ 1xSC-250
Fw-190F-8U1.1sc500	+ 1xSC-500
Fw-190F-8U1.1ab250	+ 1xAB-250
Fw-190F-8U1.1ab500	+ 1xAB-500
Fw-190F-8U1.1sd500	+ 1xSD-500
Fw-190F-8U1.u82tank	+ 2xDroptanks
Fw-190F-8U1.u81sc2502tank	+ 1xSC-250 + 2xDroptanks
Fw-190F-8U1.u81sc5002tank	+ 1xSC-500 + 2xDroptanks
Fw-190F-8U1.u81ab2502tank	+ 1xAB-250 + 2xDroptanks
Fw-190F-8U1.u81ab5002tank	+ 1xAB-500 + 2xDroptanks
Fw-190F-8U1.u81sd5002tank	+ 1xSD-500 + 2xDroptanks
Fw-190F-8U1.none	Empty

#####

# Fw-190F-9

#####

Fw-190F-9.default	default
Fw-190F-9.1sc250	+ 1xSC-250
Fw-190F-9.1ab250	+ 1xAB-250
Fw-190F-9.1sc500	+ 1xSC-500
Fw-190F-9.1ab500	+ 1xAB-500
Fw-190F-9.1sd500	+ 1xSD-500
Fw-190F-9.1sc250_4sc50	+ 1xSC-250 + 4xSC-50
Fw-190F-9.1ab250_4sc50	+ 1xAB-250 + 4xSC-50
Fw-190F-9.1sc500_4sc50	+ 1xSC-500 + 4xSC-50
Fw-190F-9.1ab500_4sc50	+ 1xAB-500 + 4xSC-50
Fw-190F-9.1sd500_4sc50	+ 1xSD-500 + 4xSC-50
Fw-190F-9.4sc50_4sc70	+ 4xSC-50 + 4xSC-70
Fw-190F-9.1tank_4sc70	+ 4xSC-70 + 1xDroptank
Fw-190F-9.1sc250_4sc70	+ 1xSC-250 + 4xSC-70
Fw-190F-9.1ab250_4sc70	+ 1xAB-250 + 4xSC-70
Fw-190F-9.1sc500_4sc70	+ 1xSC-500 + 4xSC-70
Fw-190F-9.1ab500_4sc70	+ 1xAB-500 + 4xSC-70
Fw-190F-9.1sd500_4sc70	+ 1xSD-500 + 4xSC-70
Fw-190F-9.U1_2sc250	+ 2xSC-250
Fw-190F-9.U1_2ab250	+ 2xAB-250
Fw-190F-9.U1_2tank	+ 2xDroptanks
Fw-190F-9.U1_3sc250	+ 3xSC-250
Fw-190F-9.U1_2sc250_1sc500	+ 2xSC-250 + 1xSC-500
Fw-190F-9.1sc1000	+ 1xSC-1000
Fw-190F-9.1sc1800	+ 1xSC-1800
Fw-190F-9.1tank	+ 1xDroptank
Fw-190F-9.none	Empty

#####

# Fw-190F-9/PB

#####

Fw-190F-9/PB.default	default
Fw-190F-9/PB.PB2	+ 12xRockets PB2
Fw-190F-9/PB.PB2_4sc50	+ 12xRockets PB2 + 4xSC-50
Fw-190F-9/PB.PB2_1sc250	+ 12xRockets PB2 + 1xSC-250
Fw-190F-9/PB.PB1	+ 12xRockets PB1



Fw-190F-9/PB.PB1_4sc50	+ 12xRockets PB1 + 4xSC-50
Fw-190F-9/PB.PB1_1sc250	+ 12xRockets PB1 + 1xSC-250
Fw-190F-9/PB.none	Empty

```
#####  
# Fw-190G-1  
#####  
Fw-190G-1.default          default  
Fw-190G-1.1sc250_2tank    + 1xSC-250 + 2xDroptanks  
Fw-190G-1.1ab250_2tank    + 1xAB-250 + 2xDroptanks  
Fw-190G-1.1sc500_2tank    + 1xSC-500 + 2xDroptanks  
Fw-190G-1.1ab500_2tank    + 1xAB-500 + 2xDroptanks  
Fw-190G-1.1sd500_2tank    + 1xSD-500 + 2xDroptanks  
Fw-190G-1.4sc50_2tank     + 4xSC-50 + 2xDroptanks  
Fw-190G-1.2tank           + 2xDroptanks  
Fw-190G-1.none            Empty
```

```
#####  
# Fw-190G-2  
#####  
Fw-190G-2.default          default  
Fw-190G-2.1sc250_2tank    + 1xSC-250 + 2xDroptanks  
Fw-190G-2.1ab250_2tank    + 1xAB-250 + 2xDroptanks  
Fw-190G-2.1sc500_2tank    + 1xSC-500 + 2xDroptanks  
Fw-190G-2.1ab500_2tank    + 1xAB-500 + 2xDroptanks  
Fw-190G-2.1sd500_2tank    + 1xSD-500 + 2xDroptanks  
Fw-190G-2.4sc50_2tank     + 4xSC-50 + 2xDroptanks  
Fw-190G-2.none            Empty
```

```
#####  
# Fw-190G-3  
#####  
Fw-190G-3.default          default  
Fw-190G-3.1sc250_2tank    + 1xSC-250 + 2xDroptanks  
Fw-190G-3.1ab250_2tank    + 1xAB-250 + 2xDroptanks  
Fw-190G-3.1sc500_2tank    + 1xSC-500 + 2xDroptanks  
Fw-190G-3.1ab500_2tank    + 1xAB-500 + 2xDroptanks  
Fw-190G-3.1sd500_2tank    + 1xSD-500 + 2xDroptanks  
Fw-190G-3.4sc50_2tank     + 4xSC-50 + 2xDroptanks  
Fw-190G-3.2sc250_1tank    + 2xSC-250 + 1xDroptank  
Fw-190G-3.2ab250_1tank    + 2xAB-250 + 1xDroptank  
Fw-190G-3.2sc250          + 2xSC-250  
Fw-190G-3.2ab250          + 2xAB-250  
Fw-190G-3.3sc250          + 3xSC-250  
Fw-190G-3.2tank           + 2xDroptanks  
Fw-190G-3.none            Empty
```

```
#####  
# Fw-190G-8  
#####  
Fw-190G-8.default          default  
Fw-190G-8.1sc250_2tank    + 1xSC-250 + 2xDroptanks  
Fw-190G-8.1ab250_2tank    + 1xAB-250 + 2xDroptanks  
Fw-190G-8.1sc500_2tank    + 1xSC-500 + 2xDroptanks  
Fw-190G-8.1ab500_2tank    + 1xAB-500 + 2xDroptanks  
Fw-190G-8.1sd500_2tank    + 1xSD-500 + 2xDroptanks  
Fw-190G-8.4sc50_2tank     + 4xSC-50 + 2xDroptanks  
Fw-190G-8.2sc250_1tank    + 2xSC-250 + 1xDroptank  
Fw-190G-8.2ab250_1tank    + 2xAB-250 + 1xDroptank  
Fw-190G-8.1sc250_4sc70    + 1xSC-250 + 4xSC-70  
Fw-190G-8.1ab250_4sc70    + 1xAB-250 + 4xSC-70  
Fw-190G-8.1sc500_2sc50_2sc70 + 1xSC-500 + 2xSC-50 + 2xSC-70  
Fw-190G-8.1ab500_2sc50_2sc70 + 1xAB-500 + 2xSC-50 + 2xSC-70  
Fw-190G-8.1sd500_2sc50_2sc70 + 1xSD-500 + 2xSC-50 + 2xSC-70  
Fw-190G-8.4sc50_4sc70     + 4xSC-50 + 4xSC-70  
Fw-190G-8.2sc250          + 2xSC-250  
Fw-190G-8.2ab250          + 2xAB-250  
Fw-190G-8.3sc250          + 3xSC-250  
Fw-190G-8.2sc250_1sc500    + 2xSC-250 + 1xSC-500  
Fw-190G-8.1sc1000         + 1xSC-1000
```

Fw-190G-8.1sc1800	+ 1xSC-1800
Fw-190G-8.2tank	+ 2xDroptanks
Fw-190G-8.none	Empty

```
#####
# Ta-152B
#####
Ta-152B.default          default
Ta-152B.1MK103          (1xMk103 + 6xMG151/20)
Ta-152B.2MK108          (3xMk108 + 4xMG151/20)
Ta-152B.2MK103          (1xMk108 + 4xMG151/20 + 2xMk103)
Ta-152B.B-5             (3xMk103)
Ta-152B.B-5Droptank     (3xMk103) + 1xDroptank
Ta-152B.none            Empty
```

```
#####
# Ta-152C
#####
Ta-152C.default          default
Ta-152C.2x4             + 2 missiles X-4
Ta-152C.2xSC250         (2xMG151/20) + 2xSC-250
Ta-152C.none            Empty
```

```
#####
# Ta-152C-0
#####
Ta-152C0.Default        default
Ta-152C0.Empty          Empty
```

```
#####
# Ta-152C-1
#####
Ta-152C1.Default        default
Ta-152C1.R14            (2xMG151/20) + 1xTorpedo
Ta-152C1.Empty          Empty
```

```
#####
# Ta-152C-3
#####
Ta-152C3.Default        default
Ta-152C3.1xSC250        + 1xSC-250
Ta-152C3.1xAB250        + 1xAB-250
Ta-152C3.1xSC500        + 1xSC-500
Ta-152C3.1xdroptank     + 1xDroptank
Ta-152C3.2xX-4          + 2 missiles X-4
Ta-152C3.Empty          Empty
```

```
#####
# Ta-152E-1
#####
Ta-152E-1.default       default
Ta-152E-1.Droptank      + 1xDroptank
Ta-152E-1.none          Empty
```

```
#####
# Ta-152H-0
#####
Ta-152H-0.default       default
Ta-152H-0.Droptank      + 1xDroptank
Ta-152H-0.MK_103/30_Motorkanone  1 Mk103 + 2Mg 151/20
Ta-152H-0.MK_213/20_Motorkanone  1 Mk213/20 + 2Mg 151/20
Ta-152H-0.MK_213/30_Motorkanone  1 Mk213/30 + 2Mg 151/20
Ta-152H-0.none          Empty
```

```
#####
# Ta-152H-1
#####
Ta-152H-1.default       default
Ta-152H-1.Droptank      + 1xDroptank
Ta-152H-1.none          Empty
```

---

---

## Plane\_ru.properties

Fw-190A-2	Fw-190A-2, 1941
Fw-190A-3	Fw-190A-3, 1942
Fw-190A-3Sani	Fw-190A-3, 1.32Ata, 1942
Fw-190A-3Sani1	Fw-190A-3, 1.42Ata, 1942
Fw-190A-4	Fw-190A-4, 1942
FW-190A-4_1.42ATA	Fw-190A-4, 1.42 Ata, 1942
Fw-190A-5	Fw-190A-5, 1943
FW-190A-5_1.42ATA	Fw-190A-5, 1.42 Ata, 1943
FW-190A-5_1.58ATA	Fw-190A-5, 1.58 Ata, 1943
Fw-190A-5165ATA	Fw-190A-5, 1.65 Ata, 1943
Fw-190A-5U14	Fw-190A-5 "Torp", 1943
FW-190A-6orig	Fw-190A-6*, 1943
Fw-190A-6	Fw-190A-6, 1943
FW-190A-6R8	Fw-190A-6/R8, 1943
Fw-190A-7	Fw-190A-7, 1943
Fw-190A-7STURM	Fw-190A-7 "Sturm", 1943
Fw-190A-8	Fw-190A-8, 1944
FW-190A-8_1.65ATA	Fw-190A-8, 1.65 Ata, 1944
Fw-190A-8R11	Fw-190A-8/R11, 1944
Fw-190A-8Mistel	Fw-190A-8 (Mistel), 1944
Fw-190A-9	Fw-190A-9, 1944
FW-190A-9_1.65ATA	Fw-190A-9, 1.65 Ata, 1944
FW_190D9orig	Fw-190D-9, 1.7 Ata, 1944
FW190D9early	Fw-190D-9, oct-nov 1944
Fw-190D-9	Fw-190D-9, 1944
FW190D9R5	Fw-190D9/R5, Mars 1945
FW_190D-9L_orig	Fw-190D-9, 1.8 Ata, 1945
Fw-190D-9_Late	Fw-190D-9, 1945
Fw-190D-11	Fw-190D-11, 1945
Fw-190D-13	Fw-190D-13, 1945
Fw-190D-14	Fw-190D-14, 1945
Fw-190D-14Proto	Fw-190D-14 "prototype", 1945
Fw-190D-15	Fw-190D-15, 1945
Fw-190F-1	Fw-190F-1, 1942
Fw-190F-2	Fw-190F-2, 1943
Fw-190F-2Trop	Fw-190F2/Trop, 1943
Fw-190F-3	Fw-190F-3, 1943
Fw-190F-8	Fw-190F-8, 1944
Fw-190F-8/PB	Fw-190F-8 "Panzer Blitz", 1944
Fw-190F-8_Late	Fw-190F-8 Late, 1945
Fw-190F-8U1	Fw-190F-8/U1, 1944
Fw-190F-9	Fw-190F-9, 1944
Fw-190F-9/PB	Fw-190F-9 "Panzer Blitz", 1944
Fw-190G-1	Fw-190G-1, 1942
Fw-190G-2	Fw-190G-2, 1943
Fw-190G-3	Fw-190G-3, 1943
Fw-190G-8	Fw-190G-8, 1944
Ta-152B	Ta-152B, 1944
Ta-152C	Ta-152C, 1945
Ta-152C0	Ta-152C-0, 1943
Ta-152C1	Ta-152C-1, 1944
Ta-152C3	Ta-152C-3, 1944



Ta-152H-0      Ta-152H-0, 1944  
Ta-152H-1      Ta-152H-1, 1944

---

## Stationary.ini

### [FW\_190A2]

Description FW\_190A2  
Icon Plane  
Class air.FW\_190A2  
PanzerType Car  
PanzerSubtype 4  
PanzerBodyFront 0.004  
Explode WagonMetal

### [FW\_190A3]

Description FW\_190A3  
Icon Plane  
Class air.FW\_190A3  
PanzerType Car  
PanzerSubtype 4  
PanzerBodyFront 0.004  
Explode WagonMetal

### [FW\_190A3SANI]

Description FW\_190A3SANI  
Icon Plane  
Class air.FW\_190A3SANI  
PanzerType Car  
PanzerSubtype 4  
PanzerBodyFront 0.004  
Explode WagonMetal

### [FW\_190A3SANI1]

Description FW\_190A3SANI1  
Icon Plane  
Class air.FW\_190A3SANI1  
PanzerType Car  
PanzerSubtype 4  
PanzerBodyFront 0.004  
Explode WagonMetal

### [FW\_190A4]

Description FW\_190A4  
Icon Plane  
Class air.FW\_190A4  
PanzerType Car  
PanzerSubtype 4  
PanzerBodyFront 0.004  
Explode WagonMetal

### [FW\_190A4142ATA]

Description FW\_190A4142ATA  
Icon Plane  
Class air.FW\_190A4142ATA

PanzerType Car  
PanzerSubtype 4  
PanzerBodyFront 0.004  
Explode WagonMetal

[FW\_190A5]

Description FW\_190A5  
Icon Plane  
Class air.FW\_190A5  
PanzerType Car  
PanzerSubtype 4  
PanzerBodyFront 0.004  
Explode WagonMetal

[FW\_190A5142ATA]

Description FW\_190A5142ATA  
Icon Plane  
Class air.FW\_190A5142ATA  
PanzerType Car  
PanzerSubtype 4  
PanzerBodyFront 0.004  
Explode WagonMetal

[FW\_190A5158ATA]

Description FW\_190A5158ATA  
Icon Plane  
Class air.FW\_190A5158ATA  
PanzerType Car  
PanzerSubtype 4  
PanzerBodyFront 0.004  
Explode WagonMetal

[FW\_190A5165ATA]

Description FW\_190A5165ATA  
Icon Plane  
Class air.FW\_190A5165ATA  
PanzerType Car  
PanzerSubtype 4  
PanzerBodyFront 0.004  
Explode WagonMetal

[FW\_190A5U14]

Description FW\_190A5U14  
Icon Plane  
Class air.FW\_190A5U14  
PanzerType Car  
PanzerSubtype 4  
PanzerBodyFront 0.004  
Explode WagonMetal

[FW\_190A6RLP]

Description FW\_190A6RLP  
Icon Plane  
Class air.FW\_190A6RLP  
PanzerType Car  
PanzerSubtype 4  
PanzerBodyFront 0.004  
Explode WagonMetal

[FW\_190A6]

Description FW\_190A6

Icon Plane

Class air.FW\_190A6

PanzerType Car

PanzerSubtype 4

PanzerBodyFront 0.004

Explode WagonMetal

[FW\_190A6LULU]

Description FW\_190A6LULU

Icon Plane

Class air.FW\_190A6LULU

PanzerType Car

PanzerSubtype 4

PanzerBodyFront 0.004

Explode WagonMetal

[FW\_190A7]

Description FW\_190A7

Icon Plane

Class air.FW\_190A7

PanzerType Car

PanzerSubtype 4

PanzerBodyFront 0.004

Explode WagonMetal

[FW\_190A7STURM]

Description FW\_190A7STURM

Icon Plane

Class air.FW\_190A7STURM

PanzerType Car

PanzerSubtype 4

PanzerBodyFront 0.004

Explode WagonMetal

[FW\_190A8]

Description FW\_190A8

Icon Plane

Class air.FW\_190A8

PanzerType Car

PanzerSubtype 4

PanzerBodyFront 0.004

Explode WagonMetal

[FW\_190A8165ATA]

Description FW\_190A8165ATA

Icon Plane

Class air.FW\_190A8165ATA

PanzerType Car

PanzerSubtype 4

PanzerBodyFront 0.004

Explode WagonMetal

[FW\_190A8R11]

Description FW\_190A8R11

Icon Plane



Class air.FW\_190A8R11  
PanzerType Car  
PanzerSubtype 4  
PanzerBodyFront 0.004  
Explode WagonMetal

[FW\_190A8MSTL]  
Description FW\_190A8MSTL  
Icon Plane  
Class air.FW\_190A8MSTL  
PanzerType Car  
PanzerSubtype 4  
PanzerBodyFront 0.004  
Explode WagonMetal

[FW\_190A9]  
Description FW\_190A9  
Icon Plane  
Class air.FW\_190A9  
PanzerType Car  
PanzerSubtype 4  
PanzerBodyFront 0.004  
Explode WagonMetal

[FW\_190A9165ATA]  
Description FW\_190A9165ATA  
Icon Plane  
Class air.FW\_190A9165ATA  
PanzerType Car  
PanzerSubtype 4  
PanzerBodyFront 0.004  
Explode WagonMetal

[FW\_190D9RLP]  
Description FW\_190D9RLP  
Icon Plane  
Class air.FW\_190D9RLP  
PanzerType Car  
PanzerSubtype 4  
PanzerBodyFront 0.004  
Explode WagonMetal

[FW190D9early]  
Description FW190D9early  
Icon Plane  
Class air.FW190D9early  
PanzerType Car  
PanzerSubtype 4  
PanzerBodyFront 0.004  
Explode WagonMetal

[FW\_190D9]  
Description FW\_190D9  
Icon Plane  
Class air.FW\_190D9  
PanzerType Car  
PanzerSubtype 4  
PanzerBodyFront 0.004

Explode           WagonMetal

[FW190D9r5]

Description   FW190D9r5

Icon           Plane

Class          air.FW190D9r5

PanzerType   Car

PanzerSubtype 4

PanzerBodyFront   0.004

Explode           WagonMetal

[FW\_190D92]

Description   FW\_190D92

Icon           Plane

Class          air.FW\_190D92

PanzerType   Car

PanzerSubtype 4

PanzerBodyFront   0.004

Explode           WagonMetal

[FW\_190D9LATE]

Description   FW\_190D9LATE

Icon           Plane

Class          air.FW\_190D9LATE

PanzerType   Car

PanzerSubtype 4

PanzerBodyFront   0.004

Explode           WagonMetal

[FW\_190D11]

Description   FW\_190D11

Icon           Plane

Class          air.FW\_190D11

PanzerType   Car

PanzerSubtype 4

PanzerBodyFront   0.004

Explode           WagonMetal

[FW\_190D13]

Description   FW\_190D13

Icon           Plane

Class          air.FW\_190D13

PanzerType   Car

PanzerSubtype 4

PanzerBodyFront   0.004

Explode           WagonMetal

[FW\_190D14]

Description   FW\_190D14

Icon           Plane

Class          air.FW\_190D14

PanzerType   Car

PanzerSubtype 4

PanzerBodyFront   0.004

Explode           WagonMetal

[FW\_190D14Proto]

Description   FW\_190D14Proto

Icon Plane  
Class air.FW\_190D14Proto  
PanzerType Car  
PanzerSubtype 4  
PanzerBodyFront 0.004  
Explode WagonMetal

[FW\_190D15]  
Description FW\_190D15  
Icon Plane  
Class air.FW\_190D15  
PanzerType Car  
PanzerSubtype 4  
PanzerBodyFront 0.004  
Explode WagonMetal

[FW\_190F1]  
Description FW\_190F1  
Icon Plane  
Class air.FW\_190F1  
PanzerType Car  
PanzerSubtype 4  
PanzerBodyFront 0.004  
Explode WagonMetal

[FW\_190F2]  
Description FW\_190F2  
Icon Plane  
Class air.FW\_190F2  
PanzerType Car  
PanzerSubtype 4  
PanzerBodyFront 0.004  
Explode WagonMetal

[FW\_190F2\_Trop]  
Description FW\_190F2\_Trop  
Icon Plane  
Class air.FW\_190F2\_Trop  
PanzerType Car  
PanzerSubtype 4  
PanzerBodyFront 0.004  
Explode WagonMetal

[FW\_190F3]  
Description FW\_190F3  
Icon Plane  
Class air.FW\_190F3  
PanzerType Car  
PanzerSubtype 4  
PanzerBodyFront 0.004  
Explode WagonMetal

[FW\_190F8]  
Description FW\_190F8  
Icon Plane  
Class air.FW\_190F8  
PanzerType Car  
PanzerSubtype 4



PanzerBodyFront 0.004  
Explode WagonMetal

[FW\_190F8PB]

Description FW\_190F8PB  
Icon Plane  
Class air.FW\_190F8PB  
PanzerType Car  
PanzerSubtype 4  
PanzerBodyFront 0.004  
Explode WagonMetal

[FW\_190F8LATE]

Description FW\_190F8LATE  
Icon Plane  
Class air.FW\_190F8LATE  
PanzerType Car  
PanzerSubtype 4  
PanzerBodyFront 0.004  
Explode WagonMetal

[FW\_190F8U1]

Description FW\_190F8U1  
Icon Plane  
Class air.FW\_190F8U1  
PanzerType Car  
PanzerSubtype 4  
PanzerBodyFront 0.004  
Explode WagonMetal

[FW\_190F9]

Description FW\_190F9  
Icon Plane  
Class air.FW\_190F9  
PanzerType Car  
PanzerSubtype 4  
PanzerBodyFront 0.004  
Explode WagonMetal

[FW\_190F9PB]

Description FW\_190F9PB  
Icon Plane  
Class air.FW\_190F9PB  
PanzerType Car  
PanzerSubtype 4  
PanzerBodyFront 0.004  
Explode WagonMetal

[FW\_190G1]

Description FW\_190G1  
Icon Plane  
Class air.FW\_190G1  
PanzerType Car  
PanzerSubtype 4  
PanzerBodyFront 0.004  
Explode WagonMetal

[FW\_190G2]

Description FW\_190G2  
Icon Plane  
Class air.FW\_190G2  
PanzerType Car  
PanzerSubtype 4  
PanzerBodyFront 0.004  
Explode WagonMetal

[FW\_190G3]

Description FW\_190G3  
Icon Plane  
Class air.FW\_190G3  
PanzerType Car  
PanzerSubtype 4  
PanzerBodyFront 0.004  
Explode WagonMetal

[FW\_190G8]

Description FW\_190G8  
Icon Plane  
Class air.FW\_190G8  
PanzerType Car  
PanzerSubtype 4  
PanzerBodyFront 0.004  
Explode WagonMetal

[TA\_152B]

Description TA\_152B  
Icon Plane  
Class air.TA\_152B  
PanzerType Car  
PanzerSubtype 4  
PanzerBodyFront 0.004  
Explode WagonMetal

[TA\_152C]

Description TA\_152C  
Icon Plane  
Class air.TA\_152C  
PanzerType Car  
PanzerSubtype 4  
PanzerBodyFront 0.004  
Explode WagonMetal

[TA\_152C0]

Description TA\_152C0  
Icon Plane  
Class air.TA\_152C0  
PanzerType Car  
PanzerSubtype 4  
PanzerBodyFront 0.004  
Explode WagonMetal

[TA\_152C1]

Description TA\_152C1  
Icon Plane  
Class air.TA\_152C1  
PanzerType Car

PanzerSubtype 4  
PanzerBodyFront 0.004  
Explode WagonMetal

[TA\_152C3]

Description TA\_152C3  
Icon Plane  
Class air.TA\_152C3  
PanzerType Car  
PanzerSubtype 4  
PanzerBodyFront 0.004  
Explode WagonMetal

[TA\_152H]

Description TA\_152H  
Icon Plane  
Class air.TA\_152H  
PanzerType Car  
PanzerSubtype 4  
PanzerBodyFront 0.004  
Explode WagonMetal

[TA\_152H1]

Description TA\_152H1  
Icon Plane  
Class air.TA\_152H1  
PanzerType Car  
PanzerSubtype 4  
PanzerBodyFront 0.004  
Explode WagonMetal

---

## Technics.ini

FW\_190A2 vehicles.planes.FockeWulfStatic\$FW\_190A2 2  
FW\_190A3 vehicles.planes.FockeWulfStatic\$FW\_190A3 2  
FW\_190A3SANI vehicles.planes.FockeWulfStatic\$FW\_190A3SANI 2  
FW\_190A3SANI1 vehicles.planes.FockeWulfStatic\$FW\_190A3SANI1 2  
FW\_190A4 vehicles.planes.FockeWulfStatic\$FW\_190A4 2  
FW\_190A4142ATA vehicles.planes.FockeWulfStatic\$FW\_190A4142ATA 2  
FW\_190A5 vehicles.planes.FockeWulfStatic\$FW\_190A5 2  
FW\_190A5142ATA vehicles.planes.FockeWulfStatic\$FW\_190A5142ATA 2  
FW\_190A5158ATA vehicles.planes.FockeWulfStatic\$FW\_190A5158ATA 2  
FW\_190A5165ATA vehicles.planes.FockeWulfStatic\$FW\_190A5165ATA 2  
FW\_190A5U14 vehicles.planes.FockeWulfStatic\$FW\_190A5U14 2  
FW\_190A6RLP vehicles.planes.FockeWulfStatic\$FW\_190A6RLP 2  
FW\_190A6 vehicles.planes.FockeWulfStatic\$FW\_190A6 2  
FW\_190A6LULU vehicles.planes.FockeWulfStatic\$FW\_190A6LULU 2  
FW\_190A7 vehicles.planes.FockeWulfStatic\$FW\_190A7 2  
FW\_190A7STURM vehicles.planes.FockeWulfStatic\$FW\_190A7STURM 2  
FW\_190A8 vehicles.planes.FockeWulfStatic\$FW\_190A8 2  
FW\_190A8165ATA vehicles.planes.FockeWulfStatic\$FW\_190A8165ATA 2  
FW\_190A8R11 vehicles.planes.FockeWulfStatic\$FW\_190A8R11 2  
FW\_190A8MSTL vehicles.planes.FockeWulfStatic\$FW\_190A8MSTL 2



FW_190A9	vehicles.planes.FockeWulfStatic\$FW_190A9	2
FW_190A9165ATA	vehicles.planes.FockeWulfStatic\$FW_190A9165ATA	2
FW_190D9RLP	vehicles.planes.FockeWulfStatic\$FW_190D9RLP	2
FW190D9early	vehicles.planes.FockeWulfStatic\$FW190D9early	2
FW_190D9	vehicles.planes.FockeWulfStatic\$FW_190D9	2
FW190D9r5	vehicles.planes.FockeWulfStatic\$FW190D9r5	2
FW_190D92	vehicles.planes.FockeWulfStatic\$FW_190D92	2
FW_190D9LATE	vehicles.planes.FockeWulfStatic\$FW_190D9LATE	2
FW_190D11	vehicles.planes.FockeWulfStatic\$FW_190D11	2
FW_190D13	vehicles.planes.FockeWulfStatic\$FW_190D13	2
FW_190D14	vehicles.planes.FockeWulfStatic\$FW_190D14	2
FW_190D14Proto	vehicles.planes.FockeWulfStatic\$FW_190D14Proto	2
FW_190D15	vehicles.planes.FockeWulfStatic\$FW_190D15	2
FW_190F1	vehicles.planes.FockeWulfStatic\$FW_190F1	2
FW_190F2	vehicles.planes.FockeWulfStatic\$FW_190F2	2
FW_190F2_Trop	vehicles.planes.FockeWulfStatic\$FW_190F2_Trop	2
FW_190F3	vehicles.planes.FockeWulfStatic\$FW_190F3	2
FW_190F8	vehicles.planes.FockeWulfStatic\$FW_190F8	2
FW_190F8PB	vehicles.planes.FockeWulfStatic\$FW_190F8PB	2
FW_190F8LATE	vehicles.planes.FockeWulfStatic\$FW_190F8LATE	2
FW_190F8U1	vehicles.planes.FockeWulfStatic\$FW_190F8U1	2
FW_190F9	vehicles.planes.FockeWulfStatic\$FW_190F9	2
FW_190F9PB	vehicles.planes.FockeWulfStatic\$FW_190F9PB	2
FW_190G1	vehicles.planes.FockeWulfStatic\$FW_190G1	2
FW_190G2	vehicles.planes.FockeWulfStatic\$FW_190G2	2
FW_190G3	vehicles.planes.FockeWulfStatic\$FW_190G3	2
FW_190G8	vehicles.planes.FockeWulfStatic\$FW_190G8	2
TA_152B	vehicles.planes.FockeWulfStatic\$TA_152B	2
TA_152C	vehicles.planes.FockeWulfStatic\$TA_152C	2
TA_152C0	vehicles.planes.FockeWulfStatic\$TA_152C0	2
TA_152C1	vehicles.planes.FockeWulfStatic\$TA_152C1	2
TA_152C3	vehicles.planes.FockeWulfStatic\$TA_152C3	2
TA_152H	vehicles.planes.FockeWulfStatic\$TA_152H	2
TA_152H1	vehicles.planes.FockeWulfStatic\$TA_152H1	2

---

### SOURCES used to work on the FW-190

The basis of documentation was built upon German genuine official books

D.Luft.T.2190 A-0 to A-9 Flugzeug-Handbuch for the Focke-Wulf 190 from version A-0 to A-9 and also a few (incomplete) documents for the D-9 et Ta-152.

Several books allowed us to fulfil gaps or avoid any doubt about sometimes contradictory info.

Quoted in no particular order:

Deutsche Flugzeug-Cockpits 1935-1945 by Kenneth A. Merricks  
German Aircraft Cockpits 1911-1970 by Peter W. Cohausz  
Captured Butcherbirds by Jacek Jackiewicz and Robert Bock  
Focke-Wulf Fw190/Ta152 by Manfred Griehl/Joachim Dressel  
Die Deutsche Luftfahrt Bordfunkgeräte-vom Funkensender zum Bordradar by Fritz Trenkle  
German Aircraft Interior 1935-1945 by Kenneth A. Merrick  
Monogram Close-Up 24 - Ta 152  
Kurt Tank : Focke-Wulf's Designer and Test Pilot by Wolfgang Wagner  
Focke-Wulf Fw 190A/F/G/S by Jozef And'al a priatella & Friends  
The Focke-Wulf Fw 190 Dora by Jerry Crandall  
Focke-Wulf Fw 190 Workhorse of the Luftwaffe (NASM)  
Defenders of the Reich - Jagdgeschwader 1 - Eric Mombeek  
Focke-Wulf Fw 190 & Ta-152 de Heinz J. Nowarra  
Focke-Wulf Fw 190A-8 Aircraft Handbook - Valkyrie Publications Technical Manual Series N°1  
Aero Detail 6 - Fw 190A/F  
Aero Detail 2 - Fw 190D  
Focke-Wulf Fw 190D Camouflage & markings - JAPO  
Walk Around Fw 190D  
Walk Around Fw 190A/F  
Focke-Wulf Fw 190F,G - JAPO  
Focke Wulf FW 190 in Action - Squadron Signal Publications  
Focke-Wulf fw 190 im Detail by Jens Nissen  
Waffen-Arsenal - MISTEL  
Flugzeug Profile Focke-Wulf 190  
The Luftwaffe Profile Series - Fw 190 - Manfred Griehl  
Focke-Wulf Fw 190A Die Ersten Baureihen - Dietmar Hermann - Ulrich Leverenz - Eberhard Weber  
Focke-Wulf Ta-152 - Der Weg zum Höhenjäger by Dietmar Hermann  
Focke-Wulf Fw190-Ta152 - Heinz Nowarra  
Special Drawings Fw 190 (2 volumes)

And now enough has been said, time to grab your stick !!!

Hope you'll like them

C6\_Claymore

**The End**