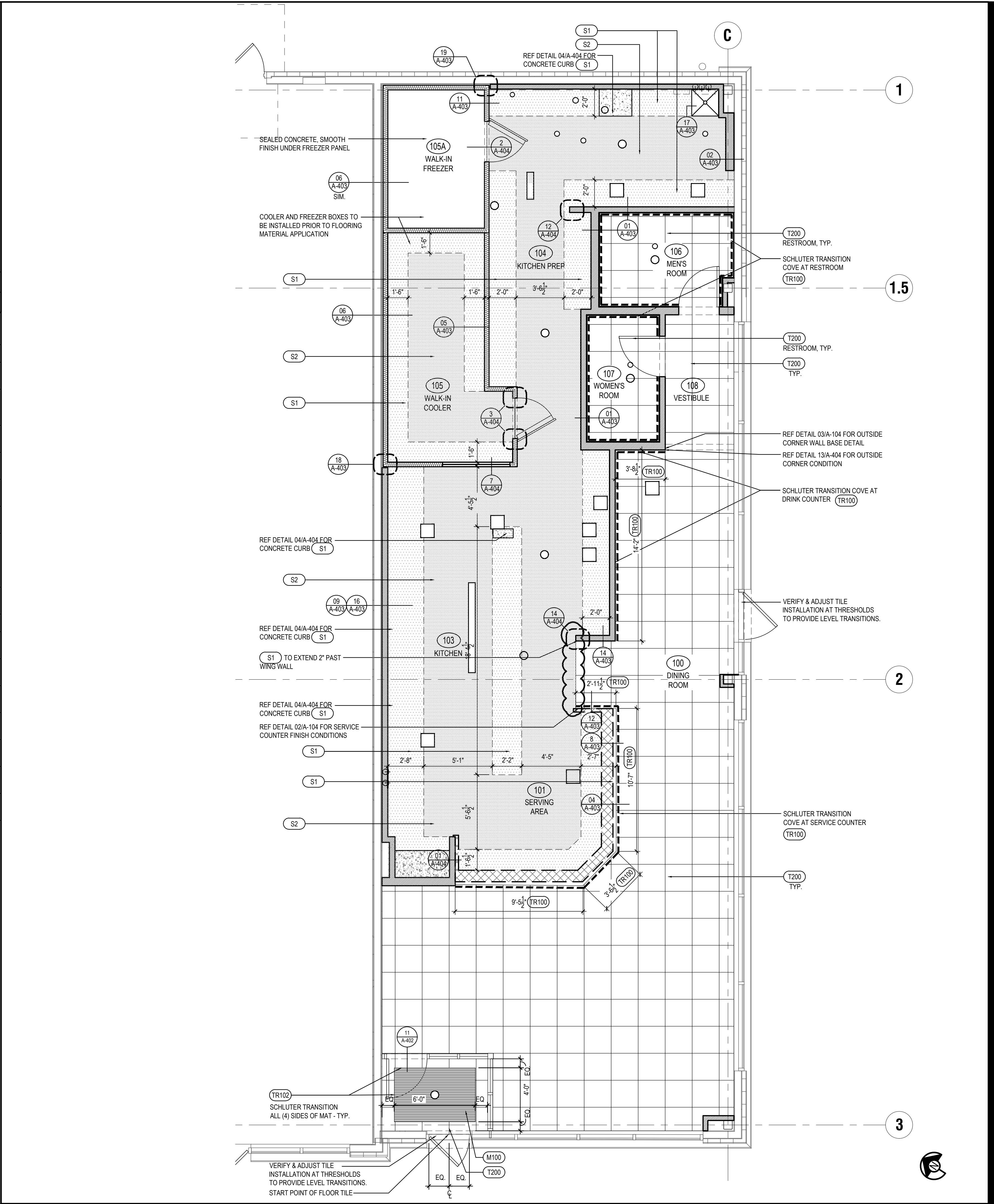


OUTSIDE CORNER DETAIL	3	SERVICE COUNTER ISOMETRIC	2
Scale= 3" = 1'-0"	A-104	Scale= 3/4" = 1'-0"	A-104

TILE SCHEDULE							
INSTALLED AND FURNISHED BY: G.C. UNLESS NOTED OTHERWISE							
NO.	MANUFACTURER	DESCRIPTION	COLOR	FINISH	JOINT	GROUT	REMARK
(T-108)	CMC AGGREGATE DOUG SALATINO 518-713-5371	12" X 24" X 3/8"	-	-	1 / 8"	G-111	RESTROOM WALL
(T-111)	DALTILE	6" X 36" X 3/8" 9" X 36" X 3/8"	FOREST PARK - SUMMERTREE FP95	MATTE	1/8"	G-115	RR VESTIBULE & DINING ROOM WALLS CONTACT: NATIONAL ACCOUNT SUPPORT DESK 877.556.5728 (national.accounts@daltile.com)
(T-124)	CMC DOUG SALATINO 518-713-5371	24" X 24"	MARQUISSETTE CALACATTA BLACK	MATTE	1/8"	G-116	DINING WAINSCOT
(T-200)	CMC DOUG SALATINO 518-713-5371	24" X 24"	BRAVADA GREIGE	MATTE	1/8"	G-96	DINING & RESTROOM FLOOR
(T-321)	DALTILE	13.562" SQUARE REVALIA BASE REMIX-FAN	FELICITY WHITE	GLOSSY	1/8"	G-114	BEVERAGE COUNTER BACKSPLASH AND SERVICE COUNTER
(T-403)	BEDROSANS TAMARA RAMSEY 469-560-6133	1" X 12"	SAHARA	MATTE	1/8"	G-107	DINING ROOM FEATURE AREA
(S1)	SILIKAL	QUARTZ BLEND #4	-	PLAIN	-	-	KITCHEN, SERVICE FLOOR CONTACT: MARK FELDMAN 770-830-1404 (mfeldman@silikalamerica.com)
(S2)	SILIKAL	QUARTZ BLEND #4	-	ABRASIVE	-	-	JOHN COTHRAN 888-830-1404 (jcothran@silikalamerica.com)
(M100)	MATSINC 800.628.7462	NUWAY - 7/16" ALUM FOOT GRILLE	CHARCOAL	-	-	-	(2) 2' X 6' PIECES FOR A 4' X 6' OVERALL MAT SIZE IN VESTIBULE @ VESTIBULE STORES
GROUT	MANUFACTURER	DESCRIPTION	MFG.	COLOR	FINISH	REMARK	
(G-96)	MAPEI 800.42.MAPEI WWW.MAPEI.COM	POLY MODIFIED GROUT	11	SAHARA BEIGE	ULTRACOLOR PLUS FA 1/8"	DINING & RESTROOM FLOOR APPLY GROUT SEALER	
(G-107)	MAPEI 800.42.MAPEI WWW.MAPEI.COM	POLY MODIFIED GROUT	107	IRON	ULTRACOLOR PLUS FA 1/8"	DINING ROOM FLOOR APPLY GROUT SEALER	
(G-111)	MAPEI 800.42.MAPEI WWW.MAPEI.COM	POLY MODIFIED GROUT	19	PEARL GREY	ULTRACOLOR PLUS FA 1/8"	RESTROOM, DINING APPLY GROUT SEALER	
(G-113)	MAPEI 800.42.MAPEI WWW.MAPEI.COM	POLY MODIFIED GROUT	07	CHOCOLATE	ULTRACOLOR PLUS FA 1/8"	APPLY GROUT SEALER	
(G-114)	MAPEI 800.42.MAPEI WWW.MAPEI.COM	POLY MODIFIED GROUT	19	PEARL GREY	ULTRACOLOR PLUS FA 1/8"	BEVERAGE COUNTER BACKSPLASH APPLY GROUT SEALER	
(G-115)	MAPEI 800.42.MAPEI WWW.MAPEI.COM	POLY MODIFIED GROUT	42	MOCHA	ULTRACOLOR PLUS FA 1/8"	APPLY GROUT SEALER	
(G-116)	MAPEI 800.42.MAPEI WWW.MAPEI.COM	POLY MODIFIED GROUT	10	BLACK	ULTRACOLOR PLUS FA 1/8"	DINING WAINSCOT APPLY GROUT SEALER	

* REFER A-200 EXTERIOR FINISH SCHEDULE FOR EXTERIOR DECORATIVE TILE	
* SCHLUTER SYSTEM ALUMINUM TRIM:	
COVE TILE TRIM: INSTALLED AT RESTROOM, SERVICE COUNTER, AND DRINK STATION SCHLUTER SYSTEMS DILEX-AHK 1S 125 ATGB (BRUSHED NICKEL ANODIZED ALUMINUM) -OUTSIDE CORNER CONNECTOR PIECE: DILEX-AHK-E90/AHK 1S 125 ATGB (BRUSHED NICKEL ANODIZED ALUMINUM) -INSIDE CORNER CONNECTOR PIECE: DILEX-AHK-I90/AHK 1S 125 ATGB (BRUSHED NICKEL ANODIZED ALUMINUM) -END CAP PIECE: DILEX-AHK-E/AHK 1S 125 ATGB (BRUSHED NICKEL ANODIZED ALUMINUM)	
(TR100)	FLOOR TILE TRANSITION TRIM: INSTALLED IN VESTIBULE AND AREA OF ACCENT FLOOR SCHLUTER SYSTEMS SCHIENE-R/AE125 (SATIN ANODIZED ALUMINUM)
(TR101)	EDGE TILE TRIM: SCHLUTER SYSTEMS RONDEC-RO125 AMGB (BRUSHED BRASS ANODIZED ALUMINUM) -OUTSIDE CORNER CONNECTOR PIECE: RONDEC-EV/RO125 AMGB (BRUSHED BRASS ANODIZED ALUMINUM) -INSIDE CORNER CONNECTOR PIECE: RONDEC-I2L/RO125 AMGB (BRUSHED BRASS ANODIZED ALUMINUM)
(TR103)	EDGE TILE TRIM: INSTALLED AT SERVICE COUNTER TOE KICK SCHLUTER SYSTEMS JOLLY-A 80 AMGB (BRUSHED BRASS ANODIZED ALUMINUM) -OUTSIDE EDGE PROTECTION PIECE
(TR104)	EDGE TILE TRIM: INSTALLED AT FLOOR INLAY SCHLUTER SYSTEMS SHIENE-R/M 125 (SATIN BRASS ANODIZED ALUMINUM)
* EPOXY GROUT BY MAPEI, KERAPOXY IEG, 100% SOLIDS INDUSTRIAL GRADE: AREAS: UNDER HOOD AND 36" IN FRONT OF COOKING LINE, 3 COMPARTMENT SINK AND MOP SINK AREA	
SEE MANUFACTURER'S SPECIFICATION, DETAILS AND GUIDE FOR PREPARATION, MIXING, GROUTING AND CLEANING INSTRUCTION	
NOTE: SEE INTERIOR SHEETS FOR WALL/ BASE TILE LOCATIONS AND SPECIFICATIONS	

FINISH SCHEDULE	A
Scale= NTS	A-104



FINISH PLAN	1
Scale= 1/4" = 1'-0"	A-104



PANDA EXPRESS, INC.  
1683 Walnut Grove Ave.  
Rosemead, California 91770  
Telephone: 626.799.9898  
Facsimile: 626.372.8288

All ideas, designs, arrangement and plans indicated or represented by this drawing are the property of Panda Express Inc. and were created for use on this specific project. None of these ideas, designs, arrangements or plans may be used by or disclosed to any person, firm, or corporation without the written permission of Panda Express Inc.

REVISIONS:	
MD STATE HEALTH PR 01	02/24/2023
BULLETIN 01	2023-04-28

ISSUE DATE:	
LL REVIEW	12-23-22
PERMITS	12-28-22
BID/ CONSTRUCTION SET	08-11-23

DRAWN BY: AB/ TD

PANDA PROJECT #: S4-24-D6247  
PANDA STORE #: D6247  
ARCH PROJECT #: JCDT18-0152

I certify that these documents were prepared or approved by me, and that I am a duly licensed architect or engineer under the laws of the State of Maryland, license number \_\_\_\_\_, expiration date \_\_\_\_\_.



PANDA EXPRESS  
PANDA HOME 2600  
14 CRANBROOK ROAD  
Cockeysville, MD 21030

A-104  
FINISH PLAN AND SCHEDULE

PANDA HOME 2600 R3

BID/CONSTRUCTION SET 08-11-2023