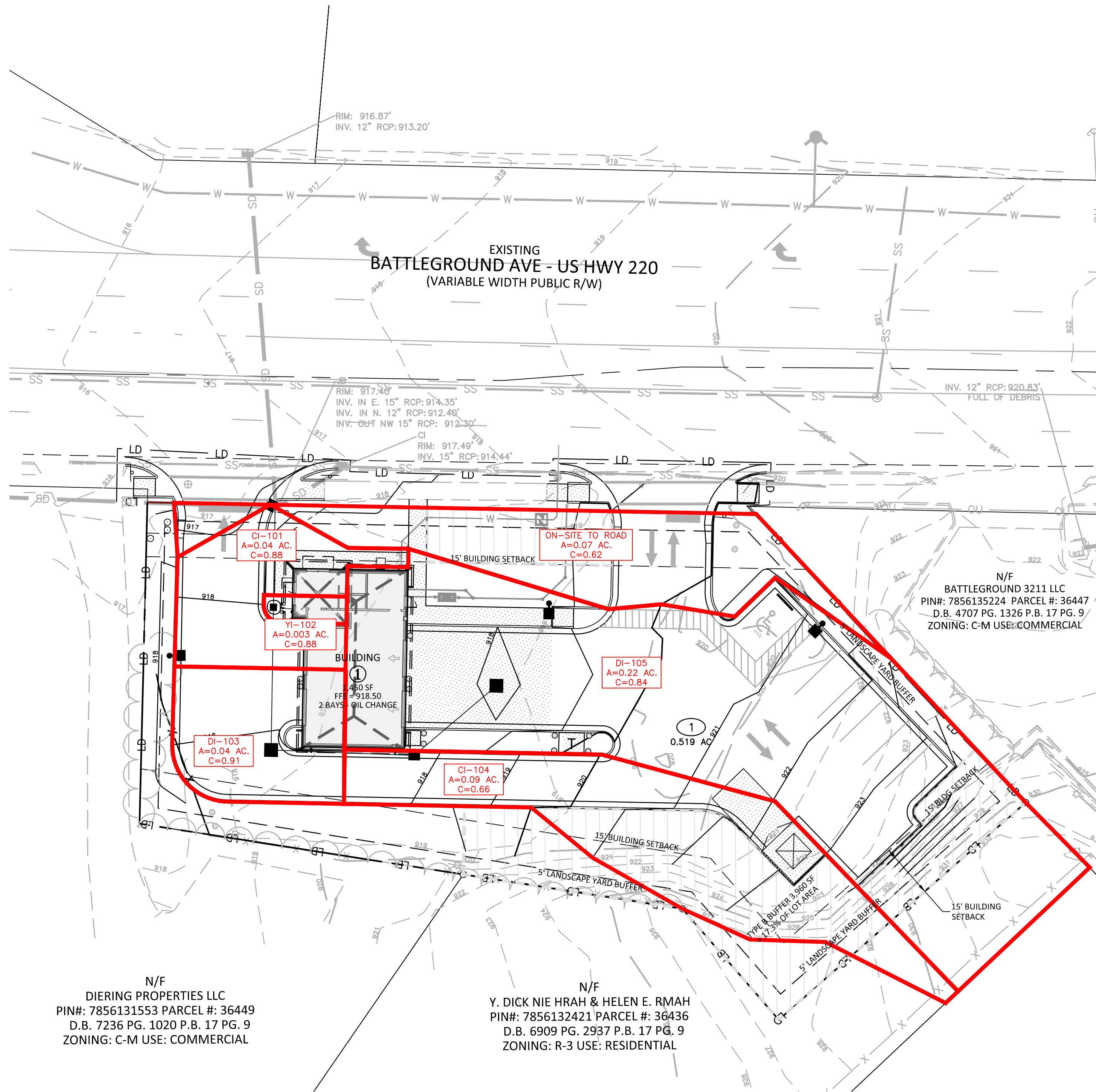


N:\Projects\NTR\2021110459\04-Production\Engineering\Construction Drawings\Current Drawings\0201110459-DA1.dwg, 12/21/2021 3:34:08 PM, Lauren McCall



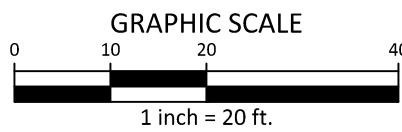
Know what's below.  
Call before you dig.

CONTRACTOR SHALL NOTIFY "NC811" (811) OR (1-800-632-4949) AT LEAST 3 FULL BUSINESS DAYS PRIOR TO BEGINNING CONSTRUCTION OR EXCAVATION TO HAVE EXISTING UTILITIES LOCATED. CONTRACTOR SHALL CONTACT ANY LOCAL UTILITIES THAT PROVIDE THEIR OWN LOCATOR SERVICES INDEPENDENT OF "NC811". REPORT ANY DISCREPANCIES TO THE ENGINEER IMMEDIATELY.



N/F  
DIERING PROPERTIES LLC  
PIN#: 7856131553 PARCEL #: 36449  
D.B. 7236 PG. 1020 P.B. 17 PG. 9  
ZONING: C-M USE: COMMERCIAL

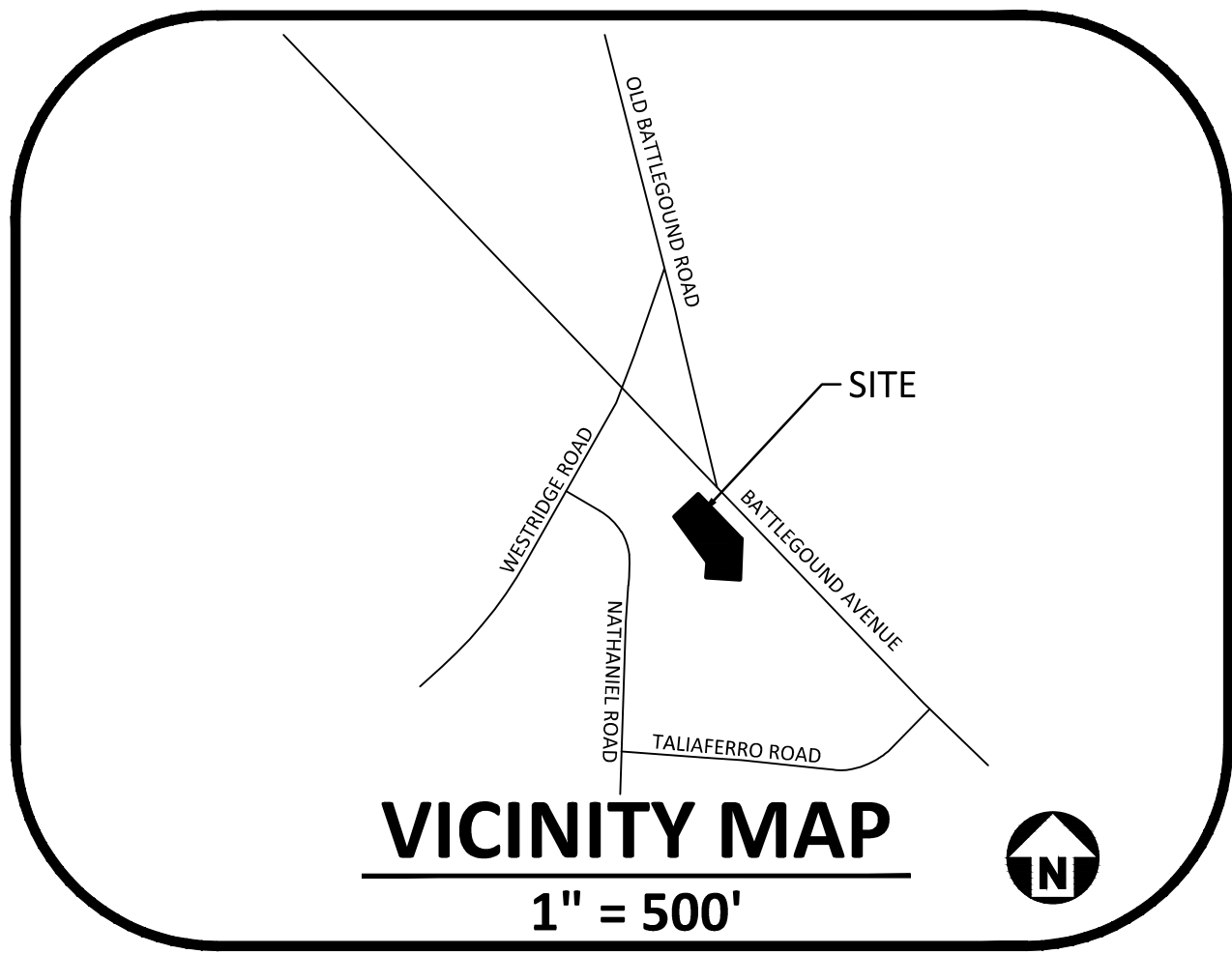
N/F  
Y. DICK NIE HRAH & HELEN E. RMAH  
PIN#: 7856132421 PARCEL #: 36436  
D.B. 6909 PG. 2937 P.B. 17 PG. 9  
ZONING: R-3 USE: RESIDENTIAL



10-YEAR STORM DRAINAGE ANALYSIS														
LINE No.	LINE ID	FLOW RATE (CFS)	LINE SIZE (IN)	LINE SHAPE	LINE LENGTH (FT)	INVERT EL DN (FT)	INVERT EL UP (FT)	LINE SLOPE (%)	HGL DOWN (FT)	HGL UP (FT)	MINOR LOSS (FT)	HGL JUNCT (FT)	DNS LINE No.	JUNCTION TYPE
1	EX100-101	2.19	15	CIR	173.498	909.46	912.30	1.637	909.90	912.89	0.34	912.89	END	COMBINATION
2	101-102	1.98	12	CIR	27.488	912.40	912.67	0.982	912.94	913.27	0.163	913.27	1	DROP GRATE
3	102-103	1.94	12	CIR	39.398	912.78	913.17	0.990	913.31	913.76	N/A	913.76	2	DROP GRATE
4	103-104	1.72	12	CIR	39.530	913.27	913.66	0.986	913.76	914.22	N/A	914.22	3	COMBINATION
5	104-105	1.33	12	CIR	29.76	913.76	914.09	1.008	914.22	947.55	0.19	914.55	4	DROP GRATE

25-YEAR STORM DRAINAGE ANALYSIS														
LINE No.	LINE ID	FLOW RATE (CFS)	LINE SIZE (IN)	LINE SHAPE	LINE LENGTH (FT)	INVERT EL DN (FT)	INVERT EL UP (FT)	LINE SLOPE (%)	HGL DOWN (FT)	HGL UP (FT)	MINOR LOSS (FT)	HGL JUNCT (FT)	DNS LINE No.	JUNCTION TYPE
1	EX100-101	2.4	15	CIR	173.498	909.46	912.3	1.637	909.92	912.92	0.37	912.92	END	COMBINATION
2	101-102	2.17	12	CIR	27.488	912.40	912.67	0.982	912.97	913.30	N/A	913.30	1	DROP GRATE
3	102-103	2.12	12	CIR	39.398	912.78	913.17	0.990	913.34	913.79	N/A	913.79	2	DROP GRATE
4	103-104	1.88	12	CIR	39.530	913.27	913.66	0.986	913.79	914.24	N/A	914.24	3	COMBINATION
5	104-105	1.46	12	CIR	29.76	913.76	914.06	1.008	914.24	914.57	N/A	914.57	4	DROP GRATE

NOTE: REFER TO DRAINAGE REPORT FOR MORE INFORMATION.



GRADING LEGEND	
	FLARED END SECTION
	ENDWALL SECTION
	CATCH BASIN
	DROP INLET
	STORM SERVICE INLET
	STORM SERVICE ROOF-RAIN
	JUNCTION BOX
	DRAINAGE FLOW ARROW
	LINE BREAK SYMBOL
	TOP & BOTTOM CURB ELEVATIONS
	TOP OF WALL ELEVATION
	BOTTOM OF WALL ELEVATION (NOTE: BOTTOM OF WALL IS GROUND ELEVATION NOT WALL FOUNDATION)
	SPOT ELEVATION
	STORM DRAINAGE
	STORM SERVICE LINE
	ROOF DRAIN, 8" ADS NON-PERFORATED TUBING OR EQUAL, 1.0% MIN. SLOPE 3' MIN. COVER PVC SCHEDULE 40 IN TRAFFIC AREAS
	TREE PROTECTION FENCE
	LIMITS OF DISTURBANCE
	WOODED AREA
	MAJOR CONTOUR
	MINOR CONTOUR
	EXISTING MAJOR CONTOUR
	EXISTING MINOR CONTOUR
	EASEMENT LINE
	ACCESSIBLE PARKING AREA (2% MAX. SLOPE IN ALL DIRECTIONS)

**McADAMS**  
The John R. McAdams Company, Inc.  
2905 Meridian Parkway  
Durham, NC 27713

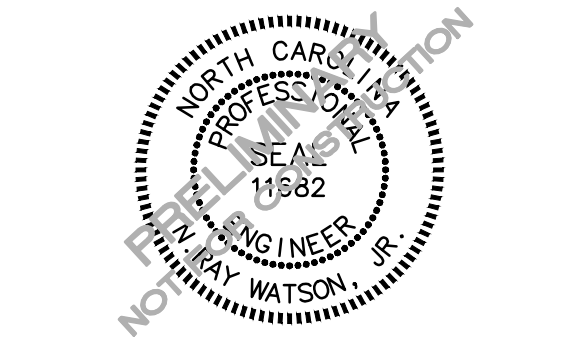
phone 919. 361. 5000  
fax 919. 361. 2269  
license number: C-0293, C-187

www.mcadamsco.com

**CLIENT**

N3 REAL ESTATE  
1240 N KIMBALL AVE  
SOUTH LAKE, TX 76092  
PHONE: 817. 348. 8748

STRICKLAND BROTHERS  
OIL CHANGE  
SITE PLAN SUBMITTAL  
3223 BATTLEGROUND AVE.  
GREENSBORO, NORTH CAROLINA



**REVISIONS**

NO.	DATE	DESCRIPTION
-----	------	-------------

**PLAN INFORMATION**

PROJECT NO.	2021110459
FILENAME	2021110459-DA1
CHECKED BY	NRW
DRAWN BY	KST
SCALE	1" = 20'
DATE	12. 21. 2021

**SHEET**

**PROPOSED DRAINAGE AREA MAP**

**C3.03**

ALL CONSTRUCTION SHALL BE IN ACCORDANCE WITH THE CURRENT CITY OF GREENSBORO ENGINEERING DESIGN AND CONSTRUCTION STANDARDS

PRELIMINARY DRAWING - NOT RELEASED FOR CONSTRUCTION